

Datasheet for ABIN3010975

**NME3 Protein**[Go to Product page](#)**1** Image

## Overview

Quantity:	100 µg
Target:	NME3
Origin:	Mouse
Source:	Escherichia coli (E. coli)
Protein Type:	Recombinant
Application:	SDS-PAGE (SDS), Western Blotting (WB), ELISA, Immunoprecipitation (IP)

## Product Details

Characteristics:	Mouse Non Metastatic Cells 3, Protein NM23A Expressed In (NME3) Protein
Purity:	> 95 %

## Target Details

Target:	NME3
Alternative Name:	Non Metastatic Cells 3, Protein NM23A Expressed In ( <a href="#">NME3 Products</a> )
Molecular Weight:	22.8 kDa
UniProt:	<a href="#">Q9WV85</a>
Pathways:	<a href="#">Nucleotide Phosphorylation</a> , <a href="#">Ribonucleoside Biosynthetic Process</a>

## Application Details

Comment:	Please note that the majority of this suppliers proteins are partial length rather than full length.
----------	--

## Application Details

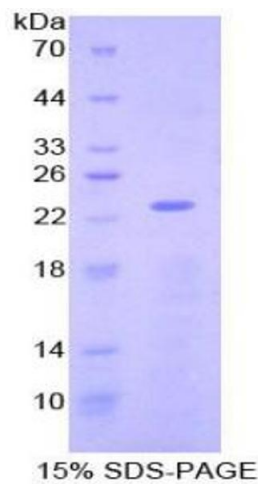
We recommend customers to inquire.

Restrictions: For Research Use only

## Handling

Format:	Liquid
Concentration:	200 µg/mL
Buffer:	Prior to lyophilization: PBS, pH 7.4, containing 0.01 % SKL, 1 mM DTT, 5 % Trehalose and Proclin-300.
Preservative:	Dithiothreitol (DTT), ProClin
Precaution of Use:	This product contains ProClin and Dithiothreitol (DTT): POISONOUS AND HAZARDOUS SUBSTANCES which should be handled by trained staff only.
Storage:	4 °C,-80 °C
Storage Comment:	Store at 2-8 °C for up to one month. Store at -80 °C for up to one year. Avoid repeated freeze/thaw cycles.

## Images



### SDS-PAGE

**Image 1.** SDS-PAGE analysis of Mouse NME3 Protein.