

Datasheet for ABIN3011612

SEMA4B Protein[Go to Product page](#)**1** Image

Overview

Quantity:	100 µg
Target:	SEMA4B
Origin:	Mouse
Source:	Escherichia coli (E. coli)
Protein Type:	Recombinant
Application:	Western Blotting (WB), SDS-PAGE (SDS), ELISA, Immunoprecipitation (IP)

Product Details

Characteristics:	Mouse Semaphorin 4B (SEMA4B) Protein
Purity:	> 95 %

Target Details

Target:	SEMA4B
Alternative Name:	Semaphorin 4B (SEMA4B Products)
Molecular Weight:	24.4 kDa
UniProt:	Q62179

Application Details

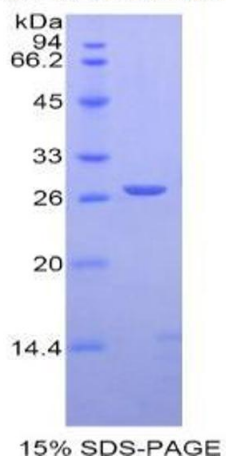
Comment:	Please note that the majority of this suppliers proteins are partial length rather than full length. We recommend customers to inquire.
Restrictions:	For Research Use only

Handling

Format:	Liquid
Concentration:	200 µg/mL
Buffer:	Prior to lyophilization: PBS, pH 7.4, containing 0.01 % SKL, 1 mM DTT, 5 % Trehalose and Proclin-300.
Preservative:	Dithiothreitol (DTT), ProClin
Precaution of Use:	This product contains ProClin and Dithiothreitol (DTT): POISONOUS AND HAZARDOUS SUBSTANCES which should be handled by trained staff only.
Storage:	4 °C, -80 °C
Storage Comment:	Store at 2-8 °C for up to one month. Store at -80 °C for up to one year. Avoid repeated freeze/thaw cycles.

Images

Mouse SEMA4B



SDS-PAGE

Image 1. SDS-PAGE analysis of Mouse Semaphorin 4B Protein.