

Datasheet for ABIN3011718

SSFA2 Protein[Go to Product page](#)**1** Image

Overview

Quantity:	100 µg
Target:	SSFA2
Origin:	Human
Source:	Escherichia coli (E. coli)
Protein Type:	Recombinant
Application:	Western Blotting (WB), SDS-PAGE (SDS)

Product Details

Characteristics:	Human Sperm Specific Antigen 2 (SSFA2) Protein
Purity:	> 95 %

Target Details

Target:	SSFA2
Alternative Name:	Sperm Specific Antigen 2 (SSFA2 Products)
Molecular Weight:	29.3 kDa (Predicted Molecular Mass), 34 & 42 kDa (Accurate Molecular Mass as determined by SDS-PAGE). Possible reasons why the actual band size differs from the predicted band size: 1. Splice variants. Alternative splicing may create differe
UniProt:	P28290

Application Details

Comment: Please note that the majority of this suppliers proteins are partial length rather than full length.
We recommend customers to inquire.

Restrictions: For Research Use only

Handling

Format: Liquid

Concentration: 200 µg/mL

Buffer: Prior to lyophilization: PBS, pH 7.4, containing 0.01 % SKL, 1 mM DTT, 5 % Trehalose and Proclin-300.

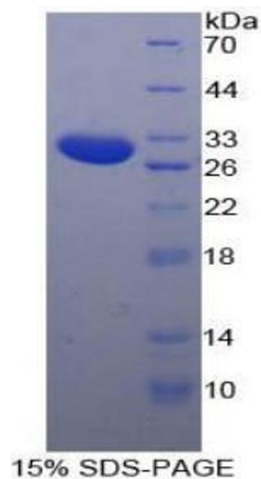
Preservative: Dithiothreitol (DTT), ProClin

Precaution of Use: This product contains ProClin and Dithiothreitol (DTT): POISONOUS AND HAZARDOUS SUBSTANCES which should be handled by trained staff only.

Storage: 4 °C,-80 °C

Storage Comment: Store at 2-8 °C for up to one month. Store at -80 °C for up to one year. Avoid repeated freeze/thaw cycles.

Images



SDS-PAGE

Image 1. SDS-PAGE analysis of Human SSFA2 Protein.