

Datasheet for ABIN3011927

**TLR4 Protein**[Go to Product page](#)**1** Image

## Overview

Quantity:	100 µg
Target:	TLR4
Origin:	Mouse
Source:	Escherichia coli (E. coli)
Protein Type:	Recombinant
Application:	Western Blotting (WB), SDS-PAGE (SDS), ELISA, Immunoprecipitation (IP)

## Product Details

Characteristics:	Mouse Toll Like Receptor 4 (TLR4) Protein
Purity:	> 95 %

## Target Details

Target:	TLR4
Alternative Name:	Toll Like Receptor 4 ( <a href="#">TLR4 Products</a> )
Molecular Weight:	33.3 kDa
UniProt:	<a href="#">Q9QUK6</a>
Pathways:	<a href="#">TLR Signaling</a> , <a href="#">Activation of Innate immune Response</a> , <a href="#">Cellular Response to Molecule of Bacterial Origin</a> , <a href="#">Positive Regulation of Immune Effector Process</a> , <a href="#">Production of Molecular Mediator of Immune Response</a> , <a href="#">Toll-Like Receptors Cascades</a> , <a href="#">Inflammasome</a> , <a href="#">S100 Proteins</a>

## Application Details

Comment: Please note that the majority of this suppliers proteins are partial length rather than full length. We recommend customers to inquire.

Restrictions: For Research Use only

## Handling

Format: Liquid

Concentration: 200 µg/mL

Buffer: Prior to lyophilization: 100 mM NaHCO<sub>3</sub>, 500 mM NaCl, pH 8.3, containing 1 mM EDTA, 1 mM DTT, 0.01 % SKL, 5 % Trehalose and Proclin-300.

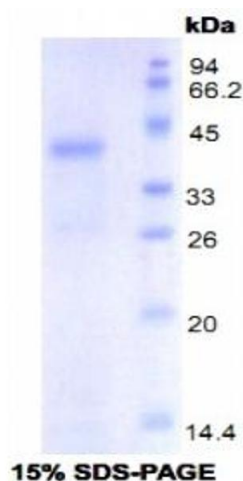
Preservative: Dithiothreitol (DTT), Other preservative, ProClin

Precaution of Use: This product contains ProClin and Dithiothreitol (DTT): POISONOUS AND HAZARDOUS SUBSTANCES which should be handled by trained staff only.

Storage: 4 °C,-80 °C

Storage Comment: Store at 2-8 °C for up to one month. Store at -80 °C for up to one year. Avoid repeated freeze/thaw cycles.

## Images



### SDS-PAGE

**Image 1.** SDS-PAGE analysis of Mouse Toll Like Receptor 4 Protein.