



[Go to Product page](#)

Datasheet for ABIN3013324
anti-ADPRHL1 antibody (AA 1-354)

1 Image

Overview

Quantity:	50 µg
Target:	ADPRHL1
Binding Specificity:	AA 1-354
Reactivity:	Human
Host:	Mouse
Clonality:	Polyclonal
Conjugate:	This ADPRHL1 antibody is un-conjugated
Application:	Western Blotting (WB)

Product Details

Purpose:	Mouse polyclonal antibody raised against a full-length human ADPRHL1 protein.
Immunogen:	ADPRHL1 (NP_612439, 1 a.a. ~ 354 a.a) full-length human protein.
Sequence:	MEKFKAAMLL GSVG DALGYR NVCKENSTVG MKIQEELQRS GGLDHLVLSP GEWPVSDNTI MHIATAEALT TDYWCLDDLY REMVRCYVEI VEKLPERRPD PATIEGCAQL KPNNYLLAWH TPFNEKGSFG GAATKAMCIG LRYWKPERLE TIEVSVECG RMTHNHPTGF LGSLCTALFV SFAAQGKPLV QWGRDMLRAV PLAAEYCRKT IRHTAEYQEH WFYFEAKWQF YLEERKISKD SENKAIFPDN YDAEEREKTY RKWSSEGRGG RRGHDAPMIA YDALLAAGNS WTELCHRAMF HGGESAATGT IAGCLFGLLY GLDLVPKGLY QDLEDKEKLE DLGAALYRLS TEEK
Cross-Reactivity:	Human
Characteristics:	Antibody reactive against mammalian transfected lysate.

Target Details

Target:	ADPRHL1
Alternative Name:	ADPRHL1 (ADPRHL1 Products)
Background:	Full Gene Name: ADP-ribosylhydrolase like 1 Synonyms: ARH2
Gene ID:	113622
NCBI Accession:	NM_138430

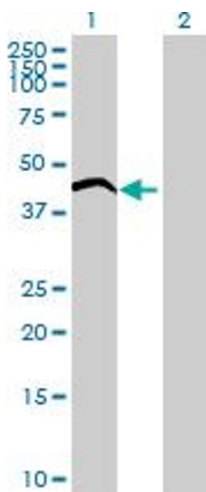
Application Details

Application Notes:	Optimal working dilution should be determined by the investigator.
Restrictions:	For Research Use only

Handling

Buffer:	In 1x PBS, pH 7.4
Storage:	-20 °C
Storage Comment:	Store at -20°C or lower. Aliquot to avoid repeated freezing and thawing.

Images



Western Blotting

Image 1. Western Blot analysis of ADPRHL1 expression in transfected 293T cell line (H00113622-T01) by ADPRHL1 MaxPab polyclonal antibody. Lane 1: ADPRHL1 transfected lysate(38.94 KDa). Lane 2: Non-transfected lysate.