



[Go to Product page](#)

Datasheet for ABIN3013327  
**anti-CLUHP3 antibody (AA 1-147)**

2 Images

Overview

Quantity:	50 µg
Target:	CLUHP3 (C16orf67)
Binding Specificity:	AA 1-147
Reactivity:	Human
Host:	Mouse
Clonality:	Polyclonal
Conjugate:	This CLUHP3 antibody is un-conjugated
Application:	Immunofluorescence (IF), Western Blotting (WB)

Product Details

Purpose:	Mouse polyclonal antibody raised against a full-length human CLUHP3 protein.
Immunogen:	CLUHP3 (AAH00552, 1 a.a. ~ 147 a.a) full-length human protein.
Sequence:	MFLNGNCLET LKKKEPEGGR RRLSHPRNMG WMRPSQETTP PDRSHHSGFG LFCGDPGPEI EPLSLWVFPQ EMVLEIHQLF MDHEYPCHHI TSHCTWVAAH WTTSQSCAAW QGCRRVCCST WWKSPAQCTR PTVMSATFET AQEPGPS
Cross-Reactivity:	Human
Characteristics:	Antibody reactive against mammalian transfected lysate.

Target Details

Target:	CLUHP3 (C16orf67)
---------	-------------------

## Target Details

Alternative Name: CLUHP3 (C16orf67 Products)

Background: Full Gene Name:  
Synonyms:

Gene ID: 79014

## Application Details

Application Notes: Optimal working dilution should be determined by the investigator.

Restrictions: For Research Use only

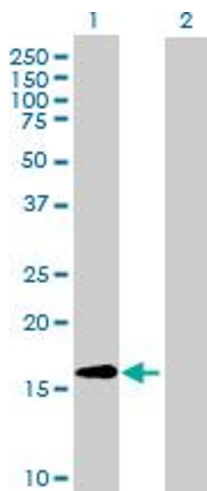
## Handling

Buffer: In 1x PBS, pH 7.4

Storage: -20 °C

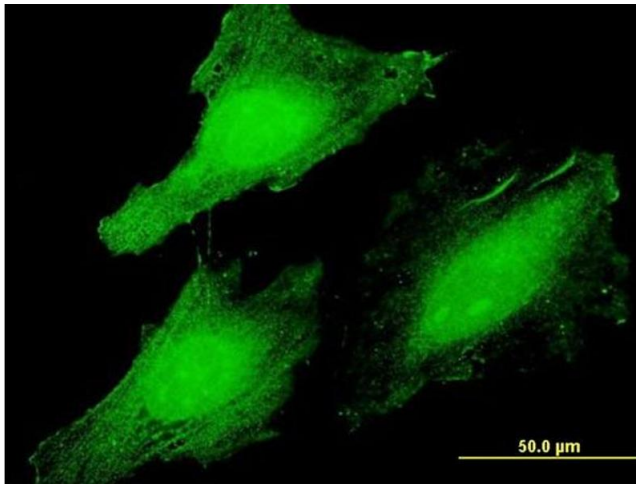
Storage Comment: Store at -20°C or lower. Aliquot to avoid repeated freezing and thawing.

## Images



### Western Blotting

**Image 1.** Western Blot analysis of CLUHP3 expression in transfected 293T cell line ( H00079014-T02 ) by CLUHP3 MaxPab polyclonal antibody. Lane 1: CLUHP3 transfected lysate(16.28 kDa). Lane 2: Non-transfected lysate.



### Immunofluorescence

**Image 2.** Immunofluorescence of purified MaxPab antibody to CLUHP3 on HeLa cell. [antibody concentration 10 ug/ml]