



[Go to Product page](#)

Datasheet for ABIN3013365
anti-METTL9 antibody (AA 1-283)

1 Image

Overview

Quantity:	50 µg
Target:	METTL9
Binding Specificity:	AA 1-283
Reactivity:	Human
Host:	Mouse
Clonality:	Polyclonal
Conjugate:	This METTL9 antibody is un-conjugated
Application:	Western Blotting (WB)

Product Details

Purpose:	Mouse polyclonal antibody raised against a full-length human METTL9 protein.
Immunogen:	METTL9 (AAH00195.1, 1 a.a. ~ 283 a.a) full-length human protein.
Sequence:	MTSGPGGPAA AAGGRKENHQ WYVCNREKLC ESLQAVFVQS YLDQGTQIFL NNSIEKSGWL FIQLYHSFVS SVFSLFMSRT SINGLLGRGS MFVFSPDQFQ RLLKINPDWK THRLLDLGAG DGEVTKIMSP HFEEIYATEL SETMIWQLQK KKYRVLGINE WQNTGFQYDV ISCLNLLDRC DQPLTLLKDI RSVLEPTRGR VILALVLPFH PYVENVGGKW EKPSEILEIK GQNWEEQVNS LPEVFRKAGF VIEAFTRLPY LCEGDMYNDY YVLDDAVFVL KPV
Cross-Reactivity:	Human
Characteristics:	Antibody reactive against mammalian transfected lysate.

Target Details

Target:	METTL9
Alternative Name:	METTL9 (METTL9 Products)
Background:	Full Gene Name: methyltransferase like 9 Synonyms: CGI-81,DREV,DREV1,FLJ21912,PAP1
Gene ID:	51108

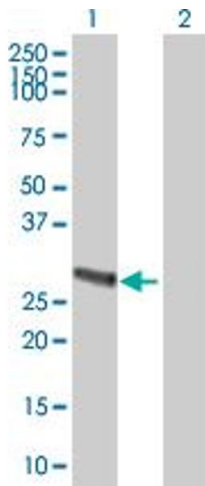
Application Details

Application Notes:	Optimal working dilution should be determined by the investigator.
Restrictions:	For Research Use only

Handling

Buffer:	In 1x PBS, pH 7.4
Storage:	-20 °C
Storage Comment:	Store at -20°C or lower. Aliquot to avoid repeated freezing and thawing.

Images



Western Blotting

Image 1. Western Blot analysis of METTL9 expression in transfected 293T cell line (H00051108-T01) by METTL9 MaxPab polyclonal antibody. Lane 1: DREV1 transfected lysate(31.13 KDa). Lane 2: Non-transfected lysate.