

Datasheet for ABIN3013384
PRIM1 Protein (AA 1-420) (GST tag)



[Go to Product page](#)

1 Image

Overview

Quantity:	10 µg
Target:	PRIM1
Protein Characteristics:	AA 1-420
Origin:	Human
Source:	Wheat germ
Protein Type:	Recombinant
Purification tag / Conjugate:	This PRIM1 protein is labelled with GST tag.
Application:	ELISA, Western Blotting (WB), Affinity Purification (AP), Antibody Array (AA)

Product Details

Purpose:	PRIM1 (Human) Recombinant Protein (P01)
Sequence:	METFDPTELP ELLKLYRRL FPYSQYYRWL NYGGVIKNYF QHREFSFTLK DDIYIRYQSF NNQSDLEKEM QKMNPYKIDI GAVYSHRPNQ HNTVKLGAFQ AQEKELVFDI DMTDYDDVRR CRSSADICPK CWTLMTMAIR IIDRALKEDF GFKHRLWVYS GRRGVHCWVC DESVRKLSSA VRSGIVEYLS LVKGGQDVKK KVHLSSEKIHP FIRKSINIIK KYFEEYALVN QDILENKESW DKILALVPET IHDELQQSFQ KSHNSLQRWE HLKKVASRYQ NNIKNDKYGP WLEWEIMLQY CFPRLDINVS KGINHLLKSP FSVHPKTGRI SVPIDLQKVD QFDPFTVPTI SFICRELDI STNEEEKEEN EAESDVKHRT RDYKKTSLAP YVKVFEHFLE NLDKSRKGEL LKKSDDLQKDF
Characteristics:	Human PRIM1 full-length ORF (BAG37381.1, 1 a.a. - 420 a.a.) recombinant protein with GST tag at N-terminal.
Purification:	in vitro wheat germ expression system

Target Details

Target:	PRIM1
Alternative Name:	PRIM1 (PRIM1 Products)
Background:	<p>Synonyms: MGC12308,p49</p> <p>Gene Description: primase, DNA, polypeptide 1 (49kDa)</p> <p>Gene Name: PRIM1</p> <p>Gene Summary: The replication of DNA in eukaryotic cells is carried out by a complex chromosomal replication apparatus, in which DNA polymerase alpha and primase are two key enzymatic components. Primase, which is a heterodimer of a small subunit and a large subunit, synthesizes small RNA primers for the Okazaki fragments made during discontinuous DNA replication. The protein encoded by this gene is the small, 49 kDa primase subunit.</p> <p>GenBank: AK314866.1, BAG37381.1</p>
Molecular Weight:	72.6 kDa (theoretical)
Gene ID:	5557
Pathways:	Telomere Maintenance , Mitotic G1-G1/S Phases , DNA Replication , Synthesis of DNA , SARS-CoV-2 Protein Interactome

Application Details

Application Notes:	Optimal working dilution should be determined by the investigator.
Restrictions:	For Research Use only

Handling

Buffer:	50 mM Tris-HCl, 10 mM reduced Glutathione, pH =8.0 in the elution buffer.
Handling Advice:	Aliquot to avoid repeated freezing and thawing.
Storage:	-80 °C
Storage Comment:	Best use within three months from the date of receipt of this protein.

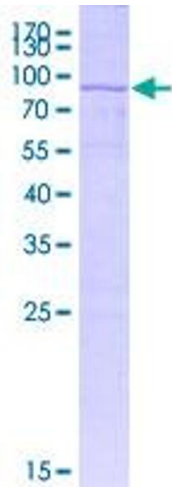


Image 1.