



[Go to Product page](#)

Datasheet for ABIN3014999

Rabbit anti-Camel IgG Antibody (HRP)

1 Image

1 Publication

Overview

Quantity:	100 µL
Target:	IgG
Reactivity:	Camel
Host:	Rabbit
Conjugate:	HRP
Application:	Immunohistochemistry (IHC), Western Blotting (WB)

Product Details

Target Details

Target:	IgG
Abstract:	IgG Products
Target Type:	Antibody

Application Details

Application Notes:	Optimal working dilutions should be determined experimentally by the investigator.
Restrictions:	For Research Use only

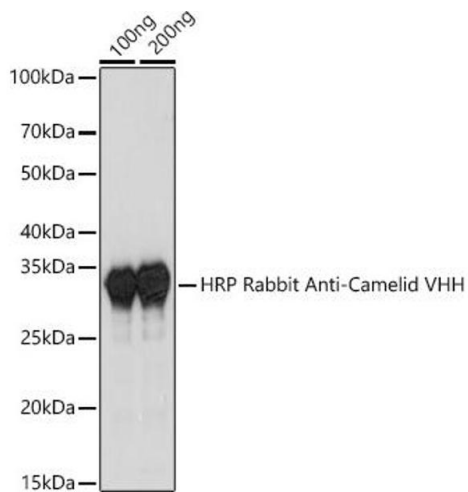
Handling

Handling Advice:	Use of Sodium Azide will inhibit enzyme activity of horseradish peroxidase.
Storage:	-20 °C

Publications

Product cited in: Li, Liu, He, Yang, Pei, Li, Liu, Chen, Xie, Xu, Ting, Zhang, Jin, Liu, Zhang, Yuan, Yang, Wu, Zhang, Yang, Yi, Liang, Shang, Sun: "ZNF516 suppresses EGFR by targeting the CtBP/LSD1/CoREST complex to chromatin." in: **Nature communications**, Vol. 8, Issue 1, pp. 691, (2018) ([PubMed](#)).

Images



Western Blotting

Image 1. Western blot analysis of extracts of various cell lines, using HRP Rabbit Anti-Camelid VHH Antibody antibody (ABIN3014998, ABIN3014999, ABIN3015000 and ABIN1680416) at 1:1000 dilution. Secondary antibody: HRP Goat Anti-Rabbit IgG (H+L) (ABIN1684268 and ABIN3020597) at 1:10000 dilution. Lysates/proteins: 25 µg per lane. Blocking buffer: 3% nonfat dry milk in TBST. Detection: ECL Basic Kit (RM00020). Exposure time: 3s.