



[Go to Product page](#)

Datasheet for ABIN3015513

anti-Phenylalanine Hydroxylase antibody (AA 1-290)

2 Images

Overview

Quantity:	100 µL
Target:	Phenylalanine Hydroxylase
Binding Specificity:	AA 1-290
Reactivity:	Human
Host:	Rabbit
Clonality:	Polyclonal
Conjugate:	This Phenylalanine Hydroxylase antibody is un-conjugated
Application:	Western Blotting (WB), Immunofluorescence (IF)

Product Details

Immunogen:	Recombinant fusion protein containing a sequence corresponding to amino acids 1-290 of human PAH (NP_000268.1).
Sequence:	MSTAVLENPG LGRKLSDFGQ ETSYIEDNCN QNGAISLIFS LKEEVGALAK VLRLFEENDV NLTHIESRPS RLKKDEYEFF THLDKRS LPA LTNIIKILRH DIGATVHELSD RDKKKDTPW FPRTIQELDR FANQILSYGA ELDADHPGFK DPVYRARRKQ FADIAYNYRH GQPIPRVEYM EEEKKTWGTV FKTLKSlykt HACYEYNHIF PLLEKYCGFH EDNIPQLEDV SQFLQTCTGF RLRPVAGLLS SRDFLGGLAF RVFHCTQYIR HGSKPMYTPE PDICHELLGH
Isotype:	IgG
Cross-Reactivity:	Human, Mouse, Rat
Characteristics:	Polyclonal Antibodies

Target Details

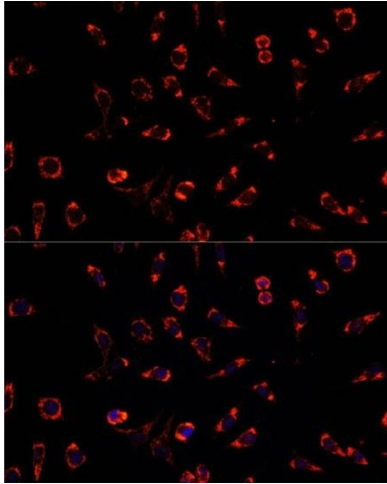
Target:	Phenylalanine Hydroxylase
Alternative Name:	PAH (Phenylalanine Hydroxylase Products)
Background:	PAH encodes the enzyme phenylalanine hydroxylase that is the rate-limiting step in phenylalanine catabolism. Deficiency of this enzyme activity results in the autosomal recessive disorder phenylketonuria.,PAH,PH,PKU,PKU1,Signal Transduction,Endocrine & Metabolism,Amino acid metabolism,PAH
Molecular Weight:	51 kDa
Gene ID:	5053
UniProt:	P00439

Application Details

Application Notes:	WB,1:500 - 1:2000,IF,1:50 - 1:200
Restrictions:	For Research Use only

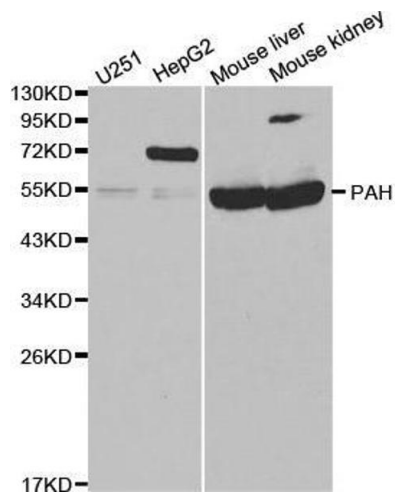
Handling

Buffer:	PBS with 0.02 % sodium azide,50 % glycerol, pH 7.3.
Preservative:	Sodium azide
Precaution of Use:	This product contains Sodium azide: a POISONOUS AND HAZARDOUS SUBSTANCE which should be handled by trained staff only.
Storage:	-20 °C
Storage Comment:	Store at -20°C. Avoid freeze / thaw cycles.



Immunofluorescence

Image 1. Immunofluorescence analysis of L929 cells using PAH antibody (ABIN3015512, ABIN3015513, ABIN3015514 and ABIN6218620) at dilution of 1:100. Blue: DAPI for nuclear staining.



Western Blotting

Image 2. Western blot analysis of extracts of various cell lines, using PAH antibody.