

Datasheet for ABIN3015547
anti-CEACAM1 antibody (AA 300-430)

5 Images

[Go to Product page](#)

Overview

Quantity:	100 µL
Target:	CEACAM1
Binding Specificity:	AA 300-430
Reactivity:	Human
Host:	Rabbit
Clonality:	Polyclonal
Conjugate:	This CEACAM1 antibody is un-conjugated
Application:	Western Blotting (WB), Immunohistochemistry (IHC)

Product Details

Immunogen:	Recombinant fusion protein containing a sequence corresponding to amino acids 300-430 of human CEACAM1 (NP_001192273.1).
Sequence:	HANNSVTGCN RTTVKTIIVT ELSPVVAKPQ IKASKTTVTG DKDSVNLTCSTNDTGISIRW FFKNQSLPSS ERMKLSQGNT TLSINPVKRE DAGTYWCEVF NPISKNQSDP IMLNVNYNAL PQENGLSPGA I
Isotype:	IgG
Cross-Reactivity:	Human, Mouse, Rat
Characteristics:	Polyclonal Antibodies
Purification:	Affinity purification

Target Details

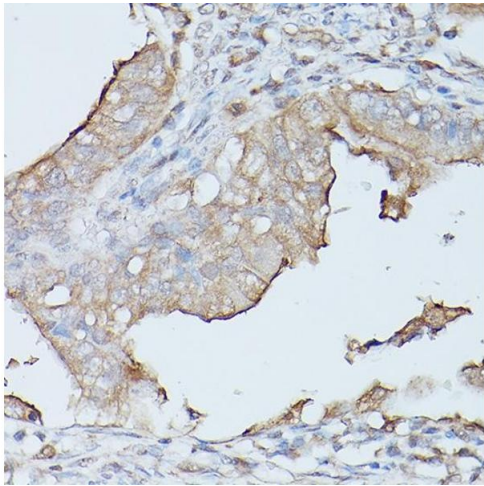
Target:	CEACAM1
Alternative Name:	CEACAM1 (CEACAM1 Products)
Background:	<p>This gene encodes a member of the carcinoembryonic antigen (CEA) gene family, which belongs to the immunoglobulin superfamily. Two subgroups of the CEA family, the CEA cell adhesion molecules and the pregnancy-specific glycoproteins, are located within a 1.2 Mb cluster on the long arm of chromosome 19. Eleven pseudogenes of the CEA cell adhesion molecule subgroup are also found in the cluster. The encoded protein was originally described in bile ducts of liver as biliary glycoprotein. Subsequently, it was found to be a cell-cell adhesion molecule detected on leukocytes, epithelia, and endothelia. The encoded protein mediates cell adhesion via homophilic as well as heterophilic binding to other proteins of the subgroup. Multiple cellular activities have been attributed to the encoded protein, including roles in the differentiation and arrangement of tissue three-dimensional structure, angiogenesis, apoptosis, tumor suppression, metastasis, and the modulation of innate and adaptive immune responses. Multiple transcript variants encoding different isoforms have been reported, but the full-length nature of all variants has not been defined.,CEACAM1,BGP,BGP1,BGPI,Immunology & Inflammation,CD markers,Cardiovascular,Angiogenesis,CEACAM1</p>
Molecular Weight:	27 kDa/35-57 kDa
Gene ID:	634
UniProt:	P13688

Application Details

Application Notes:	WB,1:500 - 1:2000,IHC,1:50 - 1:200
Restrictions:	For Research Use only

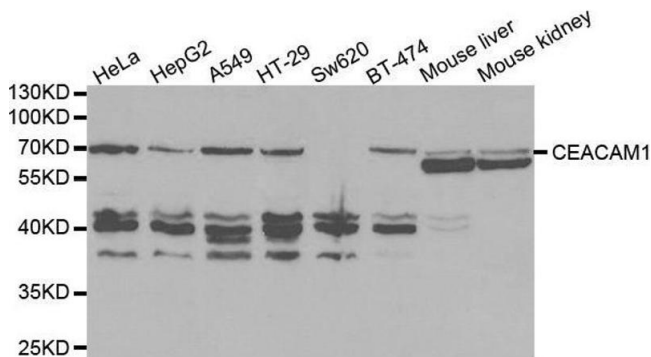
Handling

Buffer:	PBS with 0.02 % sodium azide,50 % glycerol, pH 7.3.
Preservative:	Sodium azide
Precaution of Use:	This product contains Sodium azide: a POISONOUS AND HAZARDOUS SUBSTANCE which should be handled by trained staff only.
Storage:	-20 °C
Storage Comment:	Store at -20°C. Avoid freeze / thaw cycles.



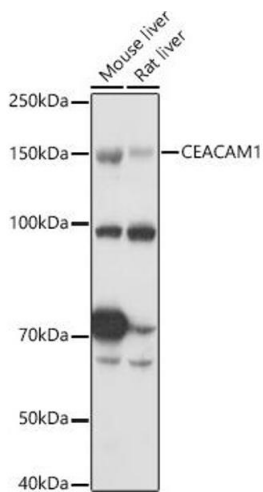
Immunohistochemistry

Image 1. Immunohistochemistry of paraffin-embedded human oophoroma using CE Rabbit pAb (ABIN3015546, ABIN3015547, ABIN3015548 and ABIN6218802) at dilution of 1:100 (40x lens). Perform high pressure antigen retrieval with 10 mM citrate buffer pH 6.0 before commencing with IHC staining protocol.



Western Blotting

Image 2. Western blot analysis of extracts of various cell lines, using CEACAM1 antibody.



Western Blotting

Image 3. Western blot analysis of extracts of various cell lines, using CE antibody (ABIN3015546, ABIN3015547, ABIN3015548 and ABIN6218802) at 1:1000 dilution. Secondary antibody: HRP Goat Anti-Rabbit IgG (H+L) (ABIN1684268 and ABIN3020597) at 1:10000 dilution. Lysates/proteins: 25 µg per lane. Blocking buffer: 3 % nonfat dry milk in TBST. Detection: ECL Basic Kit (RM00020). Exposure time: 10s.

Please check the [product details page](#) for more images. Overall 5 images are available for ABIN3015547.