

Datasheet for ABIN3015550

anti-Complement Factor B antibody (AA 80-420)

7 Images

[Go to Product page](#)

Overview

Quantity:	100 µL
Target:	Complement Factor B (CFB)
Binding Specificity:	AA 80-420
Reactivity:	Human
Host:	Rabbit
Clonality:	Polyclonal
Conjugate:	This Complement Factor B antibody is un-conjugated
Application:	Western Blotting (WB), Immunohistochemistry (IHC), Immunoprecipitation (IP), Immunofluorescence (IF)

Product Details

Immunogen:	Recombinant fusion protein containing a sequence corresponding to amino acids 80-420 of human Complement Factor B (NP_001701.2).
Sequence:	GSWSTLKTQD QKTVRKAECR AIHCPRPHDF ENGEYWPRSP YYNVSDEISF HCYDGYTLRG SANRTCQVNG RWSGQTAICD NGAGYCSNPG IPIGTRKVG S QYRLEDSVTY HCSRGLTLRG SQRRTCQEGG SWSGTEPSCQ DSFMYDTPQE VAEAFSSLT ETIEGVDAED GHGPGEQQKR KIVLDPSGSM NIYLVLDGSD SIGASNFTGA KKCLVNLIEK VASYGVKPRY GLVTYATYPK IWWKVSEADS SNADWVTKQL NEINYEDHKL KSGTNTKKAL QAVYSMMSWP DDVPPEGWNR TRHVIILMTD GLHNMGGDPI TVIDEIRDLL YIGKDRKNPR E
Isotype:	IgG
Cross-Reactivity:	Human, Mouse, Rat

Product Details

Characteristics: Polyclonal Antibodies

Purification: Affinity purification

Target Details

Target: Complement Factor B (CFB)

Alternative Name: CFB ([CFB Products](#))

Background: This gene encodes complement factor B, a component of the alternative pathway of complement activation. Factor B circulates in the blood as a single chain polypeptide. Upon activation of the alternative pathway, it is cleaved by complement factor D yielding the noncatalytic chain Ba and the catalytic subunit Bb. The active subunit Bb is a serine protease which associates with C3b to form the alternative pathway C3 convertase. Bb is involved in the proliferation of preactivated B lymphocytes, while Ba inhibits their proliferation. This gene localizes to the major histocompatibility complex (MHC) class III region on chromosome 6. This cluster includes several genes involved in regulation of the immune reaction. Polymorphisms in this gene are associated with a reduced risk of age-related macular degeneration. The polyadenylation site of this gene is 421 bp from the 5' end of the gene for complement component 2.,CFB,AHUS4,ARMD14,BF,BFD,CFAB,CFBD,FB,FBI12,GBG,H2-Bf,PBF2,Immunology & Inflammation,Cell Intrinsic Innate Immunity Signaling Pathway,CFB

Molecular Weight: 68 kDa/85 kDa

Gene ID: 629

UniProt: [P00751](#)

Pathways: [Complement System](#), [Proton Transport](#), [Ribonucleoside Biosynthetic Process](#)

Application Details

Application Notes: WB,1:500 - 1:2000,IHC,1:50 - 1:200,IF,1:50 - 1:200,IP,1:20 - 1:50

Restrictions: For Research Use only

Handling

Buffer: PBS with 0.02 % sodium azide,50 % glycerol, pH 7.3.

Preservative: Sodium azide

Precaution of Use: This product contains Sodium azide: a POISONOUS AND HAZARDOUS SUBSTANCE which

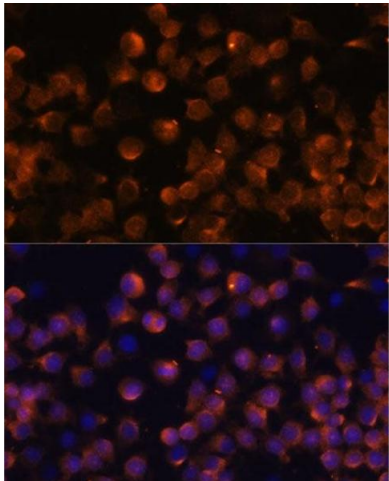
Handling

should be handled by trained staff only.

Storage: -20 °C

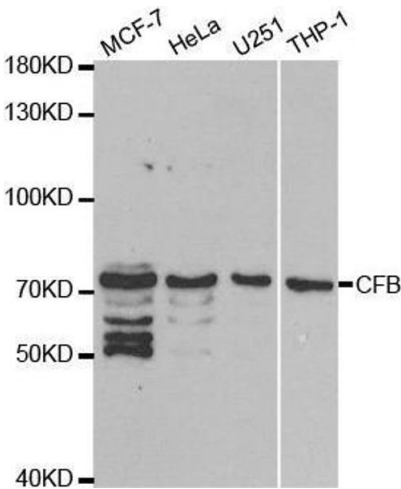
Storage Comment: Store at -20°C. Avoid freeze / thaw cycles.

Images



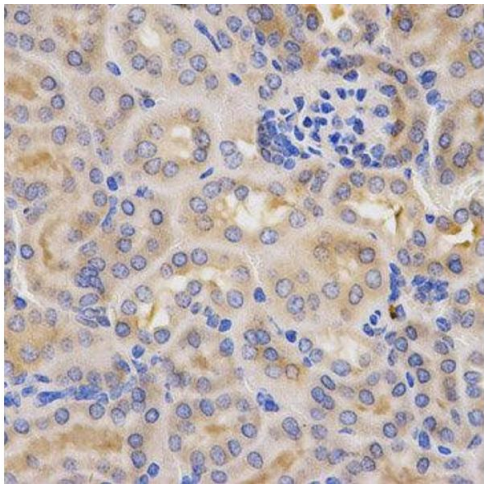
Immunofluorescence

Image 1. Immunofluorescence analysis of Raw264.7 cells using Complement factor B (CFB) Polyclonal Antibody (ABIN3015549, ABIN3015550, ABIN3015551, ABIN1679188 and ABIN6218807) at dilution of 1:100 (40x lens). Blue: DAPI for nuclear staining.



Western Blotting

Image 2. Western blot analysis of extracts of various cell lines, using CFB antibody.



Immunohistochemistry

Image 3. Immunohistochemistry of paraffin-embedded mouse kidney using CFB antibody at dilution of 1:200 (x400 lens)

Images

Please check the [product details page](#) for more images. Overall 7 images are available for ABIN3015550.