



[Go to Product page](#)

Datasheet for ABIN3015566
anti-TFF1 antibody (pSer2)

5 Images

Overview

Quantity:	100 µL
Target:	TFF1
Binding Specificity:	AA 25-84, pSer2
Reactivity:	Human
Host:	Rabbit
Clonality:	Polyclonal
Conjugate:	This TFF1 antibody is un-conjugated
Application:	Western Blotting (WB), Immunohistochemistry (IHC)

Product Details

Immunogen:	Recombinant fusion protein containing a sequence corresponding to amino acids 25-84 of human TFF1/pS2 (NP_003216.1).
Sequence:	EAQTETCTVA PRERQNGFP GVTPSQCANK GCCFDDTVRG VPWCFYPNTI DVPPEEECEF
Isotype:	IgG
Cross-Reactivity:	Human, Mouse, Rat
Characteristics:	Polyclonal Antibodies

Target Details

Target:	TFF1
Alternative Name:	TFF1 (TFF1 Products)

Target Details

Background: Members of the trefoil family are characterized by having at least one copy of the trefoil motif, a 40-amino acid domain that contains three conserved disulfides. They are stable secretory proteins expressed in gastrointestinal mucosa. Their functions are not defined, but they may protect the mucosa from insults, stabilize the mucus layer, and affect healing of the epithelium. This gene, which is expressed in the gastric mucosa, has also been studied because of its expression in human tumors. This gene and two other related trefoil family member genes are found in a cluster on chromosome 21.,TFF1,BCEI,D21S21,HP1.A,HPS2,pNR-2,pS2,Signal Transduction,Cell Biology & Developmental Biology,Growth factor,TFF1

Molecular Weight: 9 kDa

Gene ID: 7031

UniProt: [P04155](#)

Pathways: [EGFR Signaling Pathway](#)

Application Details

Application Notes: WB,1:500 - 1:1000,IHC,1:50 - 1:200

Restrictions: For Research Use only

Handling

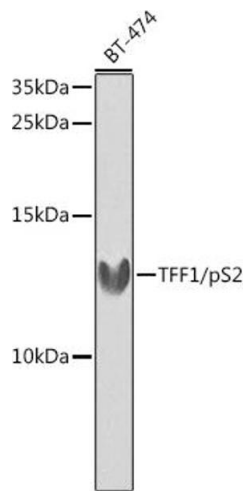
Buffer: PBS with 0.02 % sodium azide,50 % glycerol, pH 7.3.

Preservative: Sodium azide

Precaution of Use: This product contains Sodium azide: a POISONOUS AND HAZARDOUS SUBSTANCE which should be handled by trained staff only.

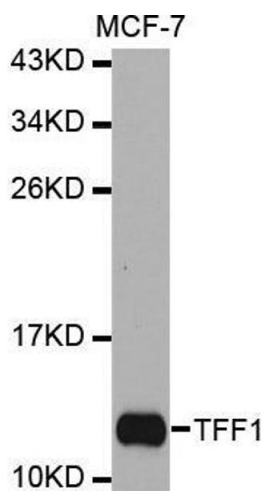
Storage: -20 °C

Storage Comment: Store at -20°C. Avoid freeze / thaw cycles.



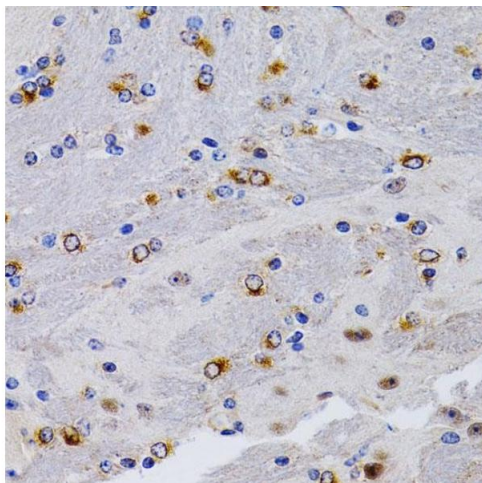
Western Blotting

Image 1. Western blot analysis of extracts of BT-474 cells, using TFF1/pS2 antibody (ABIN3015565, ABIN3015566, ABIN3015567 and ABIN6218896) at 1:1000 dilution. Secondary antibody: HRP Goat Anti-Rabbit IgG (H+L) (ABIN1684268 and ABIN3020597) at 1:10000 dilution. Lysates/proteins: 25 µg per lane. Blocking buffer: 3 % nonfat dry milk in TBST. Detection: ECL Enhanced Kit (RM00021). Exposure time: 90s.



Western Blotting

Image 2. Western blot analysis of extracts of MCF-7 cell line, using TFF1 antibody.



Immunohistochemistry

Image 3. Immunohistochemistry of paraffin-embedded mouse brain using TFF1/pS2 antibody (ABIN3015565, ABIN3015566, ABIN3015567 and ABIN6218896) at dilution of 1:200 (40x lens). Perform microwave antigen retrieval with 10 mM PBS buffer pH 7.2 before commencing with IHC staining protocol.

Please check the [product details page](#) for more images. Overall 5 images are available for ABIN3015566.