



[Go to Product page](#)

Datasheet for ABIN3015610  
**anti-RPGR antibody (AA 1-260)**

7 Images

Overview

Quantity:	100 µL
Target:	RPGR
Binding Specificity:	AA 1-260
Reactivity:	Human
Host:	Rabbit
Clonality:	Polyclonal
Conjugate:	This RPGR antibody is un-conjugated
Application:	Western Blotting (WB), Immunohistochemistry (IHC)

Product Details

Immunogen:	Recombinant fusion protein containing a sequence corresponding to amino acids 1-260 of human RPGR (NP_001030025.1).
Sequence:	MREPEELMPD SGAVFTFGKS KFAENNPVKF WFKNDVPVHL SCGDEHSAVV TGNNKLYMFG SNNWGQLGLG SKSAISKPTC VKALKPEKVK LAACGRNHTL VSTEGGNVYA TGGNNEGQLG LGDTEERNTF HVISFFTSEH KIKQLSAGSN TSAALTEDGR LFMWGDNSEG QIGLKNVSNV CVPQQVTIGK PVSWISCGYY HSAFVTTDGE LYVFGEPENG KLGLPNQLLG NHRTPQLVSE IPEKVIQVAC GGEHTVVLTE
Isotype:	IgG
Cross-Reactivity:	Human, Mouse, Rat
Characteristics:	Polyclonal Antibodies

## Target Details

---

Target:	RPGR
Alternative Name:	RPGR ( <a href="#">RPGR Products</a> )
Background:	<p>This gene encodes a protein with a series of six RCC1-like domains (RLDs), characteristic of the highly conserved guanine nucleotide exchange factors. The encoded protein is found in the Golgi body and interacts with RPGRIP1. This protein localizes to the outer segment of rod photoreceptors and is essential for their viability. Mutations in this gene have been associated with X-linked retinitis pigmentosa (XLRP). Multiple alternatively spliced transcript variants that encode different isoforms of this gene have been reported, but the full-length nature of only some have been determined.</p> <p>RPGR, COD1, CORDX1, CRD, PCDX, RP15, RP3, XLRP3, orf15, Epigenetics &amp; Nuclear Signaling, RNA Binding, Neuroscience, RPGR</p>
Molecular Weight:	52 kDa/70 kDa/83 kDa/90 kDa/113 kDa/127 kDa
Gene ID:	6103
UniProt:	<a href="#">Q92834</a>

## Application Details

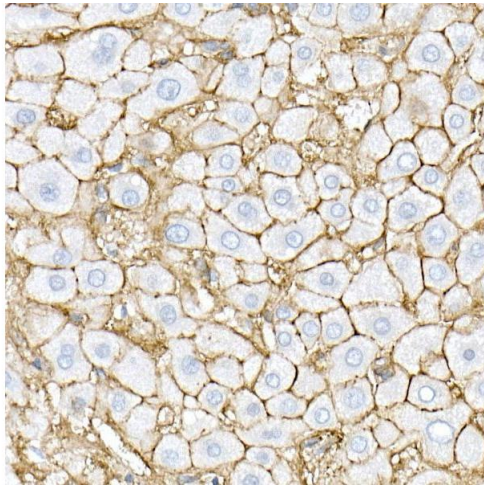
---

Application Notes:	WB, 1:500 - 1:2000, IHC, 1:50 - 1:200
Restrictions:	For Research Use only

## Handling

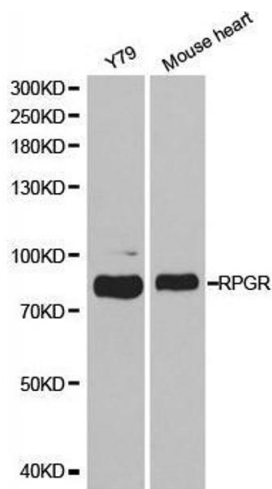
---

Buffer:	PBS with 0.02 % sodium azide, 50 % glycerol, pH 7.3.
Preservative:	Sodium azide
Precaution of Use:	This product contains Sodium azide: a POISONOUS AND HAZARDOUS SUBSTANCE which should be handled by trained staff only.
Storage:	-20 °C
Storage Comment:	Store at -20°C. Avoid freeze / thaw cycles.



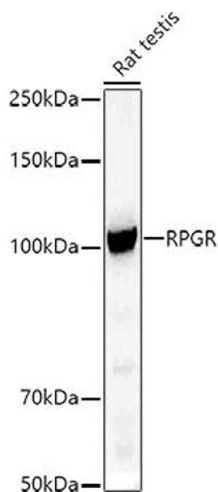
### Immunohistochemistry

**Image 1.** Immunohistochemistry of paraffin-embedded mouse brain using RPGR Rabbit pAb (ABIN3015609, ABIN3015610, ABIN3015611, ABIN1682567 and ABIN6218971) at dilution of 1:50 (40x lens). Perform high pressure antigen retrieval with 10 mM citrate buffer pH 6.0 before commencing with IHC staining protocol.



### Western Blotting

**Image 2.** Western blot analysis of extracts of various cell lines, using RPGR antibody.



### Western Blotting

**Image 3.** Western blot analysis of extracts of Rat testis, using RPGR antibody (ABIN3015609, ABIN3015610, ABIN3015611, ABIN1682567 and ABIN6218971) at 1:500 dilution. Secondary antibody: HRP Goat Anti-Rabbit IgG (H+L) (ABIN1684268 and ABIN3020597) at 1:10000 dilution. Lysates/proteins: 25 µg per lane. Blocking buffer: 3 % nonfat dry milk in TBST. Detection: ECL Basic Kit (RM00020). Exposure time: 30s.

Please check the [product details page](#) for more images. Overall 7 images are available for ABIN3015610.