

Datasheet for ABIN3015619

anti-Prostacyclin Receptor antibody (AA 207-386)



[Go to Product page](#)

6 Images

Overview

Quantity:	100 µL
Target:	Prostacyclin Receptor (PTGIR)
Binding Specificity:	AA 207-386
Reactivity:	Human
Host:	Rabbit
Clonality:	Polyclonal
Conjugate:	This Prostacyclin Receptor antibody is un-conjugated
Application:	Western Blotting (WB), Immunohistochemistry (IHC)

Product Details

Immunogen:	Recombinant fusion protein containing a sequence corresponding to amino acids 207-386 of human PTGIR (NP_000951.1).
Sequence:	TLSLCRMVYRQ QKRHQGSLGP RPRTGEDEV D HLILLALMTV VMAVCSLPLT IRCFTQAVAP DSSSEM GDLL AFRFYAFNPI LDPWVFILFR KAVFQRLKLW VCCLCLGPAH GDSQTPLSQL ASGRRDPRAP SAPVGKEGSC VPLSAWGEGQ VEPLPPTQQS SGSAVGTSSK AEASVACSLC
Isotype:	IgG
Cross-Reactivity:	Human, Mouse, Rat
Characteristics:	Polyclonal Antibodies

Target Details

Target:	Prostacyclin Receptor (PTGIR)
---------	-------------------------------

Target Details

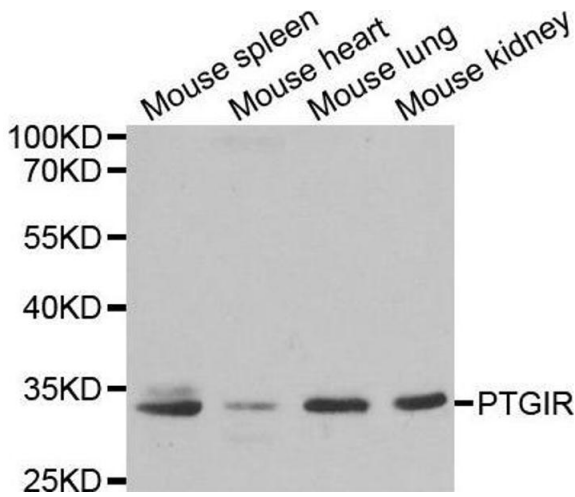
Alternative Name:	PTGIR (PTGIR Products)
Background:	The protein encoded by this gene is a member of the G-protein coupled receptor family 1 and has been shown to be a receptor for prostacyclin. Prostacyclin, the major product of cyclooxygenase in macrovascular endothelium, elicits a potent vasodilation and inhibition of platelet aggregation through binding to this receptor.,PTGIR,IP,PRIPR,Signal Transduction,G protein signaling,G-Protein-Coupled Receptors(GPCR),Cardiovascular,PTGIR
Molecular Weight:	40 kDa
Gene ID:	5739
UniProt:	P43119
Pathways:	cAMP Metabolic Process , Platelet-derived growth Factor Receptor Signaling , Thromboxane A2 Receptor Signaling

Application Details

Application Notes:	WB,1:500 - 1:2000,IHC,1:50 - 1:200
Restrictions:	For Research Use only

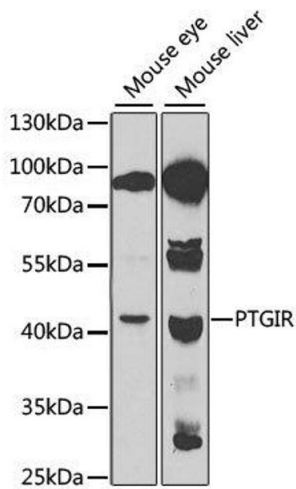
Handling

Buffer:	PBS with 0.02 % sodium azide,50 % glycerol, pH 7.3.
Preservative:	Sodium azide
Precaution of Use:	This product contains Sodium azide: a POISONOUS AND HAZARDOUS SUBSTANCE which should be handled by trained staff only.
Storage:	-20 °C
Storage Comment:	Store at -20°C. Avoid freeze / thaw cycles.



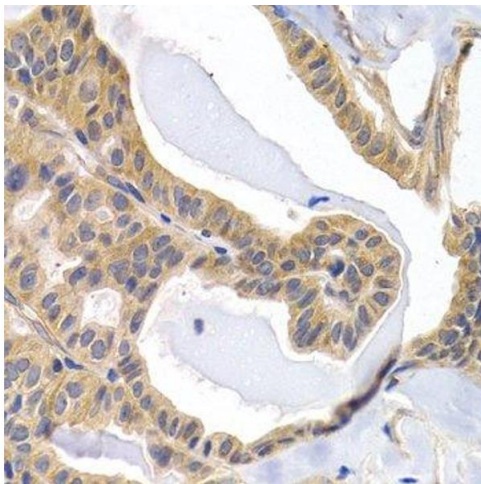
Western Blotting

Image 1. Western blot analysis of extracts of various cell lines, using PTGIR antibody.



Western Blotting

Image 2. Western blot analysis of extracts of various cell lines, using PTGIR antibody.



Immunohistochemistry (Paraffin-embedded Sections)

Image 3. Immunohistochemistry of paraffin-embedded human thyroid cancer using PTGIR antibody.

Please check the [product details page](#) for more images. Overall 6 images are available for ABIN3015619.