



[Go to Product page](#)

Datasheet for ABIN3015662
anti-GABRB2 antibody (AA 26-244)

2 Images

Overview

Quantity:	100 µL
Target:	GABRB2
Binding Specificity:	AA 26-244
Reactivity:	Human
Host:	Rabbit
Clonality:	Polyclonal
Conjugate:	This GABRB2 antibody is un-conjugated
Application:	Western Blotting (WB)

Product Details

Immunogen:	Recombinant fusion protein containing a sequence corresponding to amino acids 26-244 of human GABA A Receptor beta 2 (GABA A Receptor beta 2 (GABRB2)) (NP_000804.1).
Sequence:	SVNDPSNMSL VKETVDRLLK GYDIRLRPDF GGPPVAVGMN IDIASIDMVS EVNMDYTLTM YFQQAWRDKR LSYNVIPLNL TLDNRVADQL WVPDITYFLND KKSFVHGVTV KNRMIRLHPD GTVLYGLRIT TTAACMMDLR RYPLDEQNCT LEIESYGYTT DDIEFYWRGD DNAVTVGVTKI ELPQFSIVDY KLITKKVFS TGSYPRLSLS FKLKRNIGY
Isotype:	IgG
Cross-Reactivity:	Human, Mouse
Characteristics:	Polyclonal Antibodies
Purification:	Affinity purification

Target Details

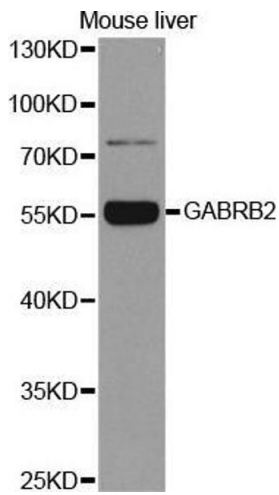
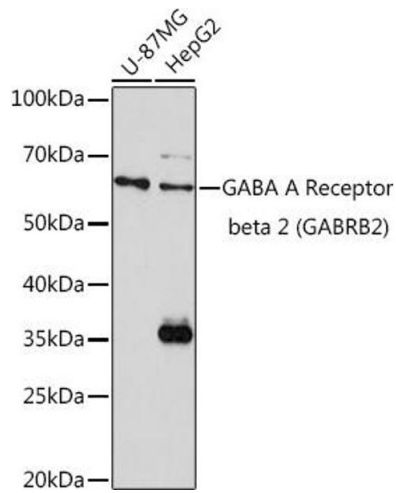
Target:	GABRB2
Alternative Name:	GABRB2 (GABRB2 Products)
Background:	<p>The gamma-aminobutyric acid (GABA) A receptor is a multisubunit chloride channel that mediates the fastest inhibitory synaptic transmission in the central nervous system. This gene encodes GABA A receptor, beta 2 subunit. It is mapped to chromosome 5q34 in a cluster comprised of genes encoding alpha 1 and gamma 2 subunits of the GABA A receptor. Alternative splicing of this gene generates 2 transcript variants, differing by a 114 bp insertion.,GABRB2,Neuroscience,GABRB2</p>
Molecular Weight:	36 kDa/42 kDa/54 kDa/59 kDa
Gene ID:	2561
UniProt:	P47870
Pathways:	Sensory Perception of Sound , Synaptic Membrane

Application Details

Application Notes:	WB,1:500 - 1:2000
Restrictions:	For Research Use only

Handling

Buffer:	PBS with 0.02 % sodium azide,50 % glycerol, pH 7.3.
Preservative:	Sodium azide
Precaution of Use:	This product contains Sodium azide: a POISONOUS AND HAZARDOUS SUBSTANCE which should be handled by trained staff only.
Storage:	-20 °C
Storage Comment:	Store at -20°C. Avoid freeze / thaw cycles.



Western Blotting

Image 1. Western blot analysis of extracts of various cell lines, using GABA A Receptor beta 2 (GABA A Receptor beta 2 (G)) Rabbit pAb (ABIN3015661, ABIN3015662, ABIN3015663, ABIN1679930 and ABIN6219009) at 1:1000 dilution. Secondary antibody: HRP Goat Anti-Rabbit IgG (H+L) (ABIN1684268 and ABIN3020597) at 1:10000 dilution. Lysates/proteins: 25 µg per lane. Blocking buffer: 3 % nonfat dry milk in TBST. Detection: ECL Basic Kit (RM00020). Exposure time: 180s.

Western Blotting

Image 2.