

Datasheet for ABIN3015683  
**anti-SLPI antibody (AA 26-132)**[Go to Product page](#)

## 1 Image

## Overview

Quantity:	100 µL
Target:	SLPI
Binding Specificity:	AA 26-132
Reactivity:	Human
Host:	Rabbit
Clonality:	Polyclonal
Conjugate:	This SLPI antibody is un-conjugated
Application:	Western Blotting (WB)

## Product Details

Immunogen:	Recombinant fusion protein containing a sequence corresponding to amino acids 26-132 of human SLPI (NP_003055.1).
Sequence:	SGKSFKAGVC PPKKSAQCLR YKKPECQSDW QCPGKKRCCP DTCGIKCLDP VDTPNPTRRK PGKCPVTYQG CLMLNPPNFC EMDGQCKRDL KCCMGMCCKS CVSPVKA
Isotype:	IgG
Cross-Reactivity:	Human, Mouse, Rat
Characteristics:	Polyclonal Antibodies

## Target Details

Target:	SLPI
---------	------

## Target Details

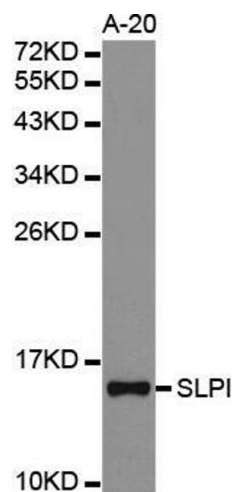
Alternative Name:	SLPI ( <a href="#">SLPI Products</a> )
Background:	<p>This gene encodes a secreted inhibitor which protects epithelial tissues from serine proteases. It is found in various secretions including seminal plasma, cervical mucus, and bronchial secretions, and has affinity for trypsin, leukocyte elastase, and cathepsin G. Its inhibitory effect contributes to the immune response by protecting epithelial surfaces from attack by endogenous proteolytic enzymes. This antimicrobial protein has antibacterial, antifungal and antiviral activity.,SLPI,ALK1,ALP,BLPI,HUSI,HUSI-I,MPI,WAP4,WFDC4,Cell Biology &amp; Developmental Biology,Ubiquitin,Immunology &amp; Inflammation,Cell Intrinsic Innate Immunity Signaling Pathway,Cardiovascular,SLPI</p>
Molecular Weight:	14 kDa
Gene ID:	6590
UniProt:	<a href="#">P03973</a>

## Application Details

Application Notes:	WB,1:500 - 1:2000
Restrictions:	For Research Use only

## Handling

Buffer:	PBS with 0.02 % sodium azide,50 % glycerol, pH 7.3.
Preservative:	Sodium azide
Precaution of Use:	This product contains Sodium azide: a POISONOUS AND HAZARDOUS SUBSTANCE which should be handled by trained staff only.
Storage:	-20 °C
Storage Comment:	Store at -20°C. Avoid freeze / thaw cycles.



Western Blotting

**Image 1.** Western blot analysis of extracts of A-20 cell lines, using SLPI antibody.