

## Datasheet for ABIN3015705 anti-CNTF antibody (AA 1-200)



[Go to Product page](#)

### 3 Images

#### Overview

Quantity:	100 µL
Target:	CNTF
Binding Specificity:	AA 1-200
Reactivity:	Human
Host:	Rabbit
Clonality:	Polyclonal
Conjugate:	This CNTF antibody is un-conjugated
Application:	Western Blotting (WB), Immunofluorescence (IF)

#### Product Details

Immunogen:	Recombinant fusion protein containing a sequence corresponding to amino acids 1-200 of human CNTF (NP_000605.1).
Sequence:	MAFTEHSPLT PHRRDLCSRS IWLARKIRSD LTALTESYVK HQGLNKNINL DSADGMPVAS TDQWSELTEA ERLQENLQAY RTFHVLLARL LEDQQVHFTP TEGDFHQAIH TLLLQVAAFA YQIEELMILL EYKIPRNEAD GMPINVDGG LFEKKLWGLK VLQELSQWTV RSIHDLRFIS SHQTGIPARG SHYIANNKKM
Isotype:	IgG
Cross-Reactivity:	Human, Mouse, Rat
Characteristics:	Polyclonal Antibodies
Purification:	Affinity purification

## Target Details

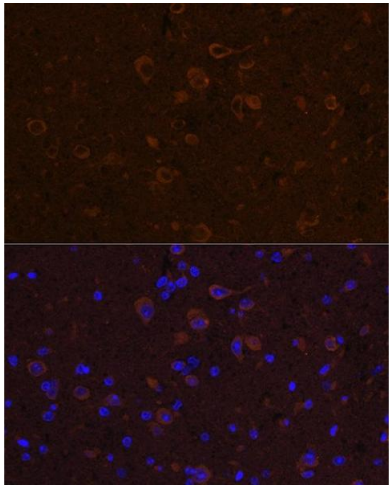
Target:	CNTF
Alternative Name:	CNTF ( <a href="#">CNTF Products</a> )
Background:	<p>The protein encoded by this gene is a polypeptide hormone whose actions appear to be restricted to the nervous system where it promotes neurotransmitter synthesis and neurite outgrowth in certain neuronal populations. The protein is a potent survival factor for neurons and oligodendrocytes and may be relevant in reducing tissue destruction during inflammatory attacks. A mutation in this gene, which results in aberrant splicing, leads to ciliary neurotrophic factor deficiency, but this phenotype is not causally related to neurologic disease. A read-through transcript variant composed of the upstream ZFP91 gene and CNTF sequence has been identified, but it is thought to be non-coding. Read-through transcription of ZFP91 and CNTF has also been observed in mouse.,CNTF,HCNTF,Cell Biology &amp; Developmental Biology,Growth factor,Immunology &amp; Inflammation,Cytokines,Neuroscience,Cell Type Marker,Stem Cells,Neural Stem Cells,Neural Stem Cell marker,CNTF</p>
Molecular Weight:	22 kDa
Gene ID:	1270
UniProt:	<a href="#">P26441</a>
Pathways:	<a href="#">JAK-STAT Signaling</a>

## Application Details

Application Notes:	WB,1:500 - 1:2000,IF,1:50 - 1:200
Restrictions:	For Research Use only

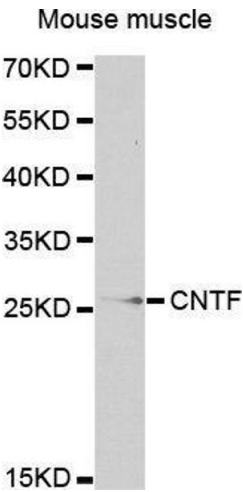
## Handling

Buffer:	PBS with 0.02 % sodium azide,50 % glycerol, pH 7.3.
Preservative:	Sodium azide
Precaution of Use:	This product contains Sodium azide: a POISONOUS AND HAZARDOUS SUBSTANCE which should be handled by trained staff only.
Storage:	-20 °C
Storage Comment:	Store at -20°C. Avoid freeze / thaw cycles.



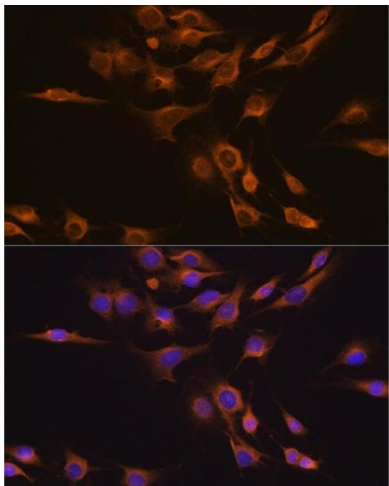
Immunofluorescence

**Image 1.** Immunofluorescence analysis of mouse spinal cord using CNTF Rabbit pAb (ABIN3015704, ABIN3015705, ABIN3015706 and ABIN6219054) at dilution of 1:100 (40x lens). Blue: DAPI for nuclear staining.



Western Blotting

**Image 2.**



Immunofluorescence

**Image 3.** Immunofluorescence analysis of C6 cells using CNTF Rabbit pAb (ABIN3015704, ABIN3015705, ABIN3015706 and ABIN6219054) at dilution of 1:100 (40x lens). Blue: DAPI for nuclear staining.