

Datasheet for ABIN3015727
anti-GLO1 antibody (AA 1-184)



[Go to Product page](#)

4 Images

Overview

Quantity:	100 µL
Target:	GLO1
Binding Specificity:	AA 1-184
Reactivity:	Human
Host:	Rabbit
Clonality:	Polyclonal
Conjugate:	This GLO1 antibody is un-conjugated
Application:	Western Blotting (WB), Immunohistochemistry (IHC), Immunofluorescence (IF)

Product Details

Immunogen:	Recombinant fusion protein containing a sequence corresponding to amino acids 1-184 of human GLO1 (NP_006699.2).
Sequence:	MAEPQPPSGG LTDEAALSCC SDADPSTKDF LLQQTMLRVK DPKKSLDFYT RVLGMTLIQK CDFPIMKFSL YFLAYEDKND IPKEKDEKIA WALSRKATLE LTHNWGTEDD ETQSYHNGNS DPRGFGHIGI AVPDVYSACK RFEELGVKFV KKPDDGKMKG LAFIQDPDGY WIEILNPNKM ATLM
Isotype:	IgG
Cross-Reactivity:	Human, Mouse
Characteristics:	Polyclonal Antibodies
Purification:	Affinity purification

Target Details

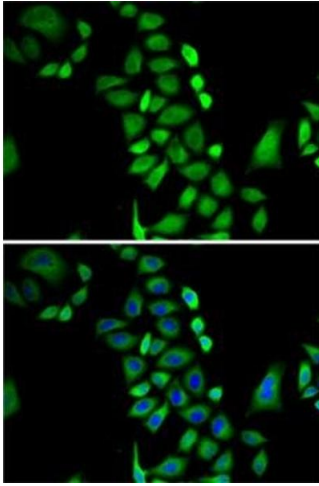
Target:	GL01
Alternative Name:	GL01 (GLO1 Products)
Background:	The enzyme encoded by this gene is responsible for the catalysis and formation of S-lactoyl-glutathione from methylglyoxal condensation and reduced glutathione. Glyoxalase I is linked to HLA and is localized to 6p21.3-p21.1, between HLA and the centromere.,GLO1,GL0D1,GLYI,HEL-S-74,Cancer,Tumor biomarkers,Signal Transduction,Cell Biology & Developmental Biology,Apoptosis,Endocrine & Metabolism,Cardiovascular,Heart,Cardiac metabolism,GLO1
Molecular Weight:	19 kDa/20 kDa
Gene ID:	2739
UniProt:	Q04760

Application Details

Application Notes:	WB,1:500 - 1:2000,IHC,1:50 - 1:200,IF,1:50 - 1:200
Restrictions:	For Research Use only

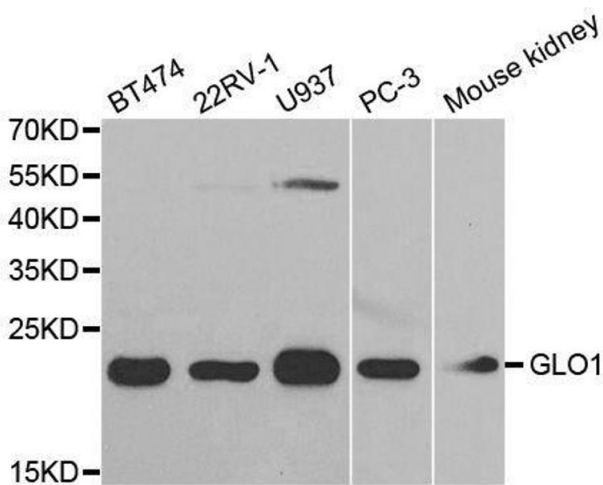
Handling

Buffer:	PBS with 0.02 % sodium azide,50 % glycerol, pH 7.3.
Preservative:	Sodium azide
Precaution of Use:	This product contains Sodium azide: a POISONOUS AND HAZARDOUS SUBSTANCE which should be handled by trained staff only.
Storage:	-20 °C
Storage Comment:	Store at -20°C. Avoid freeze / thaw cycles.



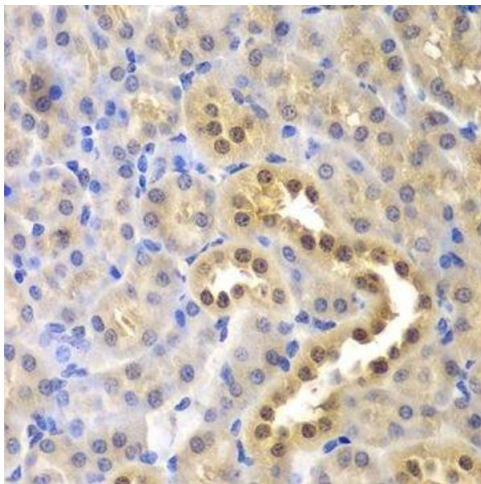
Immunofluorescence

Image 1. Immunofluorescence analysis of A-549 cells using GLO1 antibody (ABIN3015726, ABIN3015727, ABIN3015728 and ABIN6219077). Blue: DAPI for nuclear staining.



Western Blotting

Image 2. Western blot analysis of extracts of various cell lines, using GLO1 antibody.



Immunohistochemistry (Paraffin-embedded Sections)

Image 3. Immunohistochemistry of paraffin-embedded mouse kidney using GLO1 antibody.

Please check the [product details page](#) for more images. Overall 4 images are available for ABIN3015727.