

Datasheet for ABIN3015739
anti-S100A7 antibody (AA 1-101)

3 Images

[Go to Product page](#)

Overview

Quantity:	100 µL
Target:	S100A7
Binding Specificity:	AA 1-101
Reactivity:	Human
Host:	Rabbit
Clonality:	Polyclonal
Conjugate:	This S100A7 antibody is un-conjugated
Application:	Immunohistochemistry (IHC)

Product Details

Immunogen:	Recombinant fusion protein containing a sequence corresponding to amino acids 1-101 of human S100A7 (NP_002954.2).
Sequence:	MSNTQAERSI IGMIDMFHKY TRRDDKIEKP SLLTMMKENF PNFLSACDKK GTNYLADVFE KKDKNEDKKI DFSEFLSLLG DIATDYHKQS HGAAPCSGGS Q
Isotype:	IgG
Cross-Reactivity:	Human, Mouse, Rat
Characteristics:	Polyclonal Antibodies

Target Details

Target:	S100A7
---------	--------

Target Details

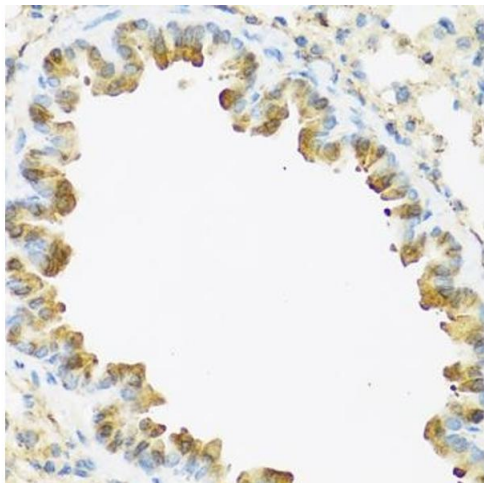
Alternative Name:	S100A7 (S100A7 Products)
Background:	<p>The protein encoded by this gene is a member of the S100 family of proteins containing 2 EF-hand calcium-binding motifs. S100 proteins are localized in the cytoplasm and/or nucleus of a wide range of cells, and involved in the regulation of a number of cellular processes such as cell cycle progression and differentiation. S100 genes include at least 13 members which are located as a cluster on chromosome 1q21. This protein differs from the other S100 proteins of known structure in its lack of calcium binding ability in one EF-hand at the N-terminus. The protein is overexpressed in hyperproliferative skin diseases, exhibits antimicrobial activities against bacteria and induces immunomodulatory activities.,S100A7,PSOR1,S100A7c,Cancer,Tumor biomarkers,Signal Transduction,Neuroscience,Calcium Signaling,Cardiovascular,Angiogenesis,S100A7</p>
Molecular Weight:	11 kDa
Gene ID:	6278
UniProt:	P31151
Pathways:	S100 Proteins

Application Details

Application Notes:	IHC,1:50 - 1:200
Restrictions:	For Research Use only

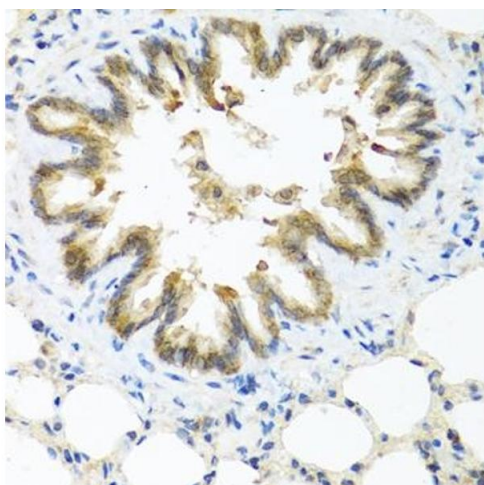
Handling

Buffer:	PBS with 0.02 % sodium azide,50 % glycerol, pH 7.3.
Preservative:	Sodium azide
Precaution of Use:	This product contains Sodium azide: a POISONOUS AND HAZARDOUS SUBSTANCE which should be handled by trained staff only.
Storage:	-20 °C
Storage Comment:	Store at -20°C. Avoid freeze / thaw cycles.



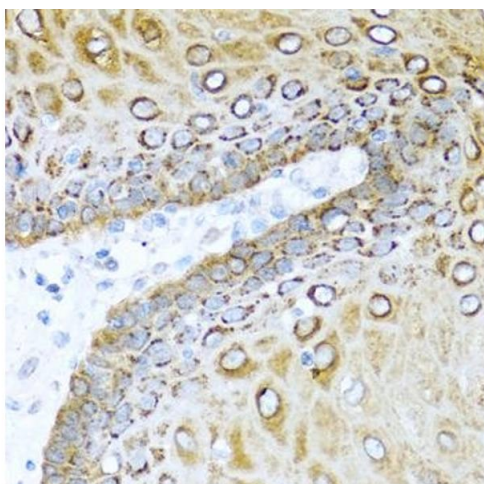
Immunohistochemistry

Image 1. Immunohistochemistry of paraffin-embedded mouse lung using S100/Psoriasin antibody (ABIN3015738, ABIN3015739, ABIN3015740 and ABIN6219085) at dilution of 1:100 (40x lens). Perform microwave antigen retrieval with 10 mM PBS buffer pH 7.2 before commencing with IHC staining protocol.



Immunohistochemistry

Image 2. Immunohistochemistry of paraffin-embedded rat lung using S100/Psoriasin antibody (ABIN3015738, ABIN3015739, ABIN3015740 and ABIN6219085) at dilution of 1:100 (40x lens). Perform microwave antigen retrieval with 10 mM PBS buffer pH 7.2 before commencing with IHC staining protocol.



Immunohistochemistry

Image 3. Immunohistochemistry of paraffin-embedded human esophagus using S100/Psoriasin antibody (ABIN3015738, ABIN3015739, ABIN3015740 and ABIN6219085) at dilution of 1:100 (40x lens). Perform microwave antigen retrieval with 10 mM PBS buffer pH 7.2 before commencing with IHC staining protocol.