



[Go to Product page](#)

Datasheet for ABIN3015771
anti-MMP8 antibody (AA 101-467)

2 Images

Overview

Quantity:	100 µL
Target:	MMP8
Binding Specificity:	AA 101-467
Reactivity:	Human
Host:	Rabbit
Clonality:	Polyclonal
Conjugate:	This MMP8 antibody is un-conjugated
Application:	Western Blotting (WB), Immunohistochemistry (IHC)

Product Details

Immunogen:	Recombinant fusion protein containing a sequence corresponding to amino acids 101-467 of human MMP8 (NP_002415.1).
Sequence:	LTPGNPKWER TNLYRIRNY TPQLSEAEVE RAIKDAFELW SVASPLIFTR ISQGEADINI AFYQRDHGDN SPFDGPNGIL AHAFQPGQGI GGDAHFDAEE TWTNTSANYN LFLVAAHEFG HSLGLAHSSD PGALMYPNYA FRETSNYSLP QDDIDIGIQAI YGLSSNPIQP TGPSTPKPCD PSLTFDAITT LRGEILFFKD RYFWRHPQL QRVEMNFISL FWPSLPTGIQ AAYEDFDRDL IFLFKGNQYW ALSGYDILQG YPKDISNYGF PSSVQAIDAA VFYRSKTYFF VNDQFWRYDN QRQFMEPGYP KSISGAFPGI ESKVDAVFQQ EHFFHVFSGP RYYAFDLIAQ RVTRVARGNK WLNCRYG
Isotype:	IgG
Cross-Reactivity:	Human, Mouse, Rat

Product Details

Characteristics: Polyclonal Antibodies

Purification: Affinity purification

Target Details

Target: MMP8

Alternative Name: MMP8 ([MMP8 Products](#))

Background: This gene encodes a member of the matrix metalloproteinase (MMP) family of proteins. These proteins are involved in the breakdown of extracellular matrix in embryonic development, reproduction, and tissue remodeling, as well as in disease processes, such as arthritis and metastasis. Proteolysis at different sites on this protein results in multiple active forms of the enzyme with distinct N-termini. This protein functions in the degradation of type I, II and III collagens. The gene is part of a cluster of MMP genes which localize to chromosome 11q22.3. Alternative splicing results in multiple transcript variants.,MMP8,CLG1,HNC,MMP-8,PMNL-CL,Cancer,Tumor biomarkers,Invasion and Metastasis,Signal Transduction,Cell Biology & Developmental Biology,Cytoskeleton,Extracellular Matrix,MMPs,Ubiquitin,Immunology & Inflammation,Cardiovascular,Angiogenesis,MMP8

Molecular Weight: 53 kDa

Gene ID: 4317

UniProt: [P22894](#)

Application Details

Application Notes: WB,1:500 - 1:2000,IHC,1:50 - 1:200

Restrictions: For Research Use only

Handling

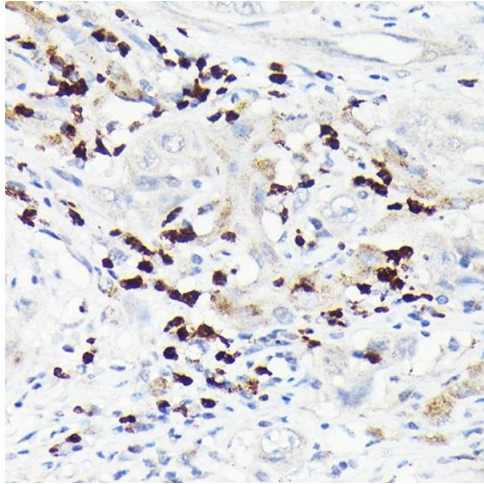
Buffer: PBS with 0.02 % sodium azide,50 % glycerol, pH 7.3.

Preservative: Sodium azide

Precaution of Use: This product contains Sodium azide: a POISONOUS AND HAZARDOUS SUBSTANCE which should be handled by trained staff only.

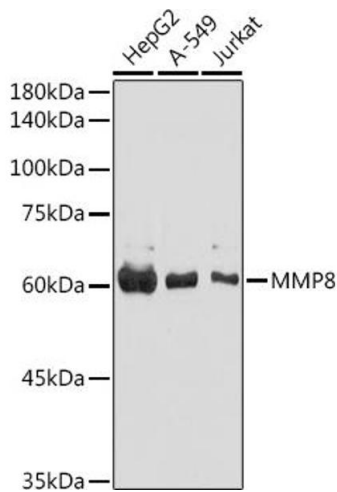
Storage: -20 °C

Storage Comment: Store at -20°C. Avoid freeze / thaw cycles.



Immunohistochemistry

Image 1. Immunohistochemistry of paraffin-embedded human liver cancer using MMP8 Rabbit pAb (ABIN3015770, ABIN3015771, ABIN3015772 and ABIN6219115) at dilution of 1:150 (40x lens). Perform high pressure antigen retrieval with 10 mM citrate buffer pH 6.0 before commencing with IHC staining protocol.



Western Blotting

Image 2. Western blot analysis of extracts of various cell lines, using MMP8 antibody (ABIN3015770, ABIN3015771, ABIN3015772 and ABIN6219115) at 1:1000 dilution. Secondary antibody: HRP Goat Anti-Rabbit IgG (H+L) (ABIN1684268 and ABIN3020597) at 1:10000 dilution. Lysates/proteins: 25 µg per lane. Blocking buffer: 3 % nonfat dry milk in TBST. Detection: ECL Basic Kit (RM00020). Exposure time: 30s.