

Datasheet for ABIN3015786
anti-RPL5 antibody (AA 1-95)

6 Images

[Go to Product page](#)

Overview

Quantity:	100 µL
Target:	RPL5
Binding Specificity:	AA 1-95
Reactivity:	Human
Host:	Rabbit
Clonality:	Polyclonal
Conjugate:	This RPL5 antibody is un-conjugated
Application:	Western Blotting (WB), Immunohistochemistry (IHC)

Product Details

Immunogen:	Recombinant fusion protein containing a sequence corresponding to amino acids 1-95 of human RPL5 (NP_000960.2).
Sequence:	MGFVKVVKNK AYFKRYQVKF RRRREGKTDY YARKRLVIQD KNKYNTPKYR MIVRVTNRDI ICQIAYARIE GDMIVCAAYA HELPKYGVKV GLTNY
Isotype:	IgG
Cross-Reactivity:	Human, Mouse, Rat
Characteristics:	Polyclonal Antibodies

Target Details

Target:	RPL5
---------	------

Target Details

Alternative Name: RPL5 ([RPL5 Products](#))

Background: Ribosomes, the organelles that catalyze protein synthesis, consist of a small 40S subunit and a large 60S subunit. Together these subunits are composed of 4 RNA species and approximately 80 structurally distinct proteins. This gene encodes a ribosomal protein that is a component of the 60S subunit. The protein belongs to the L18P family of ribosomal proteins. It is located in the cytoplasm. The protein binds 5S rRNA to form a stable complex called the 5S ribonucleoprotein particle (RNP), which is necessary for the transport of nonribosome-associated cytoplasmic 5S rRNA to the nucleolus for assembly into ribosomes. The protein interacts specifically with the beta subunit of casein kinase II. Variable expression of this gene in colorectal cancers compared to adjacent normal tissues has been observed, although no correlation between the level of expression and the severity of the disease has been found. This gene is co-transcribed with the small nucleolar RNA gene U21, which is located in its fifth intron. As is typical for genes encoding ribosomal proteins, there are multiple processed pseudogenes of this gene dispersed through the genome.,RPL5,DBA6,L5,MSTP030,PPP1R135,Epigenetics & Nuclear Signaling,RNA Binding,Cancer,Tumor biomarkers,Neuroscience,Neurodegenerative Diseases,RPL5

Molecular Weight: 34 kDa

Gene ID: 6125

UniProt: [P46777](#)

Application Details

Application Notes: WB,1:500 - 1:2000,IHC,1:50 - 1:200

Restrictions: For Research Use only

Handling

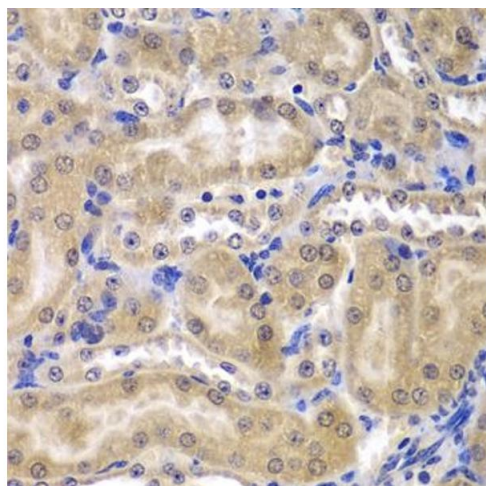
Buffer: PBS with 0.02 % sodium azide,50 % glycerol, pH 7.3.

Preservative: Sodium azide

Precaution of Use: This product contains Sodium azide: a POISONOUS AND HAZARDOUS SUBSTANCE which should be handled by trained staff only.

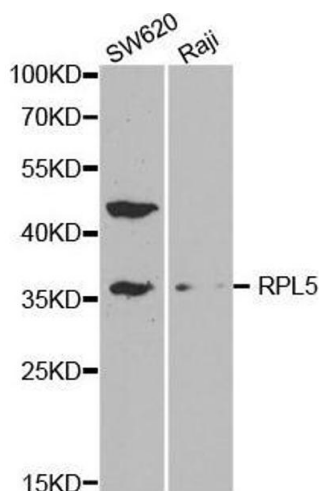
Storage: -20 °C

Storage Comment: Store at -20°C. Avoid freeze / thaw cycles.



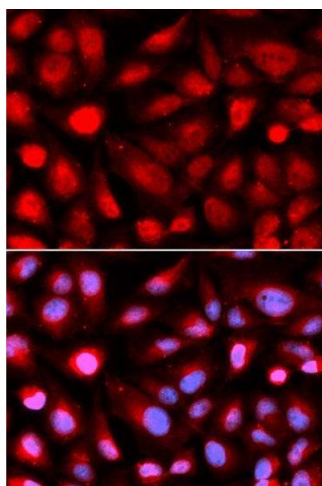
Immunohistochemistry

Image 1. Immunohistochemistry of paraffin-embedded mouse kidney using RPL5 antibody (ABIN3015785, ABIN3015786, ABIN3015787 and ABIN6219135) at dilution of 1:200 (40x lens). Perform microwave antigen retrieval with 10 mM PBS buffer pH 7.2 before commencing with IHC staining protocol.



Western Blotting

Image 2. Western blot analysis of extracts of various cell lines, using RPL5 antibody.



Immunofluorescence

Image 3. Immunofluorescence analysis of U2OS cell using RPL5 antibody. Blue: DAPI for nuclear staining.

Please check the [product details page](#) for more images. Overall 6 images are available for ABIN3015786.