

Datasheet for ABIN3015833

anti-Chitotriosidase 1 antibody (AA 217-466)[Go to Product page](#)**2** Images

Overview

Quantity:	100 µL
Target:	Chitotriosidase 1 (CHIT1)
Binding Specificity:	AA 217-466
Reactivity:	Human
Host:	Rabbit
Clonality:	Polyclonal
Conjugate:	This Chitotriosidase 1 antibody is un-conjugated
Application:	Western Blotting (WB), Immunohistochemistry (IHC)

Product Details

Immunogen:	Recombinant fusion protein containing a sequence corresponding to amino acids 217-466 of human CHIT1 (NP_003456.1).
Sequence:	SWEKVTGHNS PLYKRQEESG AAASLNVDA VQQLQKGT ASKLILGMPT YGRSFTLASS SDTRVGAPAT GSGTPGPFTK EGGMLAYYEV CSWKGATKQR IQDQKVPYIF RDNQWVGFD VESFKTKVSY LKQKGLGGAM VWALDLDDFA GFSCNQGRYP LIQTLRQELS LPYLPSGTPE LEVPKPGQPS EPEHGPSPGQ DTFCQGKADG LYPNPRERSS FYSCAAGRFL QQSCPTGLVF SNSCKCCTWN
Isotype:	IgG
Cross-Reactivity:	Human, Mouse
Characteristics:	Polyclonal Antibodies
Purification:	Affinity purification

Target Details

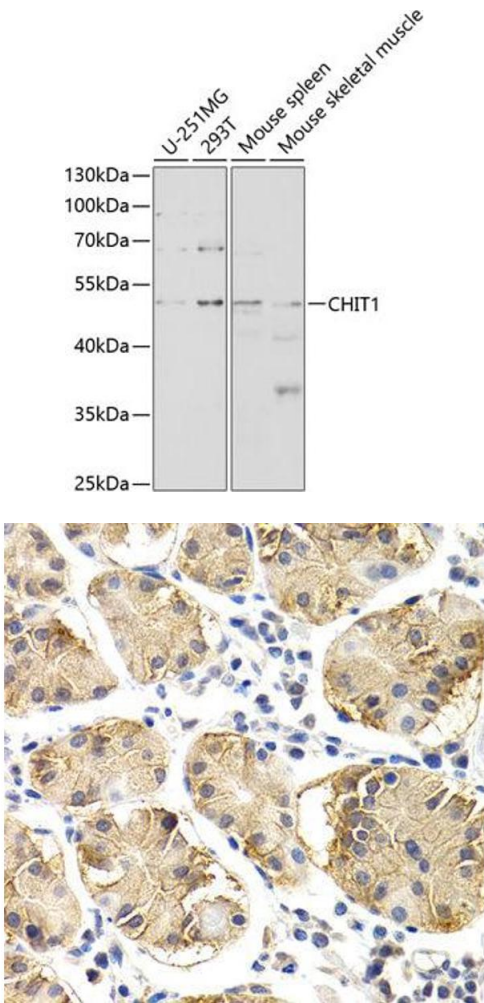
Target:	Chitotriosidase 1 (CHIT1)
Alternative Name:	CHIT1 (CHIT1 Products)
Background:	Chitotriosidase is secreted by activated human macrophages and is markedly elevated in plasma of Gaucher disease patients. The expression of chitotriosidase occurs only at a late stage of differentiation of monocytes to activated macrophages in culture. Human macrophages can synthesize a functional chitotriosidase, a highly conserved enzyme with a strongly regulated expression. This enzyme may play a role in the degradation of chitin-containing pathogens. Several alternatively spliced transcript variants have been described for this gene.,CHIT1,CHI3,CHIT,CHITD,Immunology & Inflammation,Cell Intrinsic Innate Immunity Signaling Pathway,CHIT1
Molecular Weight:	43 kDa/48 kDa/49 kDa/51 kDa
Gene ID:	1118
UniProt:	Q13231

Application Details

Application Notes:	WB,1:500 - 1:2000,IHC,1:50 - 1:200
Restrictions:	For Research Use only

Handling

Buffer:	PBS with 0.02 % sodium azide,50 % glycerol, pH 7.3.
Preservative:	Sodium azide
Precaution of Use:	This product contains Sodium azide: a POISONOUS AND HAZARDOUS SUBSTANCE which should be handled by trained staff only.
Storage:	-20 °C
Storage Comment:	Store at -20°C. Avoid freeze / thaw cycles.



Western Blotting

Image 1. Western blot analysis of extracts of various cell lines, using CHIT1 antibody (ABIN3015832, ABIN3015833, ABIN3015834 and ABIN6219182) at 1:1000 dilution. Secondary antibody: HRP Goat Anti-Rabbit IgG (H+L) (ABIN1684268 and ABIN3020597) at 1:10000 dilution. Lysates/proteins: 25 µg per lane. Blocking buffer: 3 % nonfat dry milk in TBST.

Immunohistochemistry

Image 2.