



[Go to Product page](#)

Datasheet for ABIN3015842
anti-MT2A antibody (AA 1-61)

4 Images

Overview

Quantity:	100 µL
Target:	MT2A
Binding Specificity:	AA 1-61
Reactivity:	Human
Host:	Rabbit
Clonality:	Polyclonal
Conjugate:	This MT2A antibody is un-conjugated
Application:	Immunohistochemistry (IHC), Western Blotting (WB)

Product Details

Immunogen:	Recombinant fusion protein containing a sequence corresponding to amino acids 1-61 of human MT2A (NP_005944.1).
Sequence:	MDPNCSCAAG DSCTCAGSCK CKECKCTSCK KSCCSCPVG CAKCAQGCIC KGASDKCSCC A
Isotype:	IgG
Cross-Reactivity:	Human, Mouse, Rat
Characteristics:	Polyclonal Antibodies

Target Details

Target:	MT2A
Alternative Name:	MT2A (MT2A Products)

Target Details

Background:	Metallothioneins have a high content of cysteine residues that bind various heavy metals, these proteins are transcriptionally regulated by both heavy metals and glucocorticoids.,MT2A,MT2,Endocrine & Metabolism,Mitochondrial metabolism,MT2A
Molecular Weight:	6 kDa
Gene ID:	4502
UniProt:	P02795
Pathways:	Transition Metal Ion Homeostasis

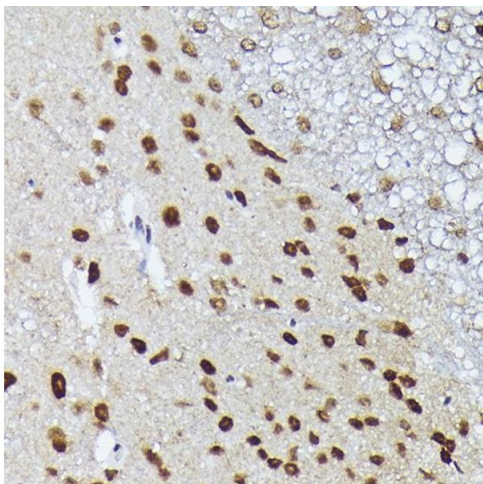
Application Details

Application Notes:	WB,1:500 - 1:2000,IHC,1:50 - 1:200
Restrictions:	For Research Use only

Handling

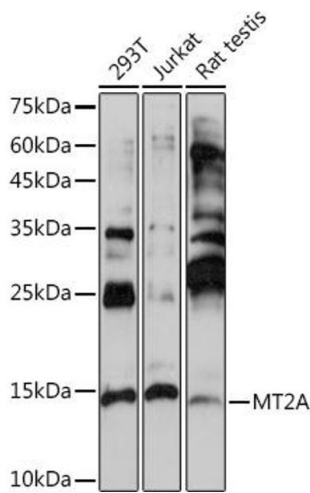
Buffer:	PBS with 0.02 % sodium azide,50 % glycerol, pH 7.3.
Preservative:	Sodium azide
Precaution of Use:	This product contains Sodium azide: a POISONOUS AND HAZARDOUS SUBSTANCE which should be handled by trained staff only.
Storage:	-20 °C
Storage Comment:	Store at -20°C. Avoid freeze / thaw cycles.

Images



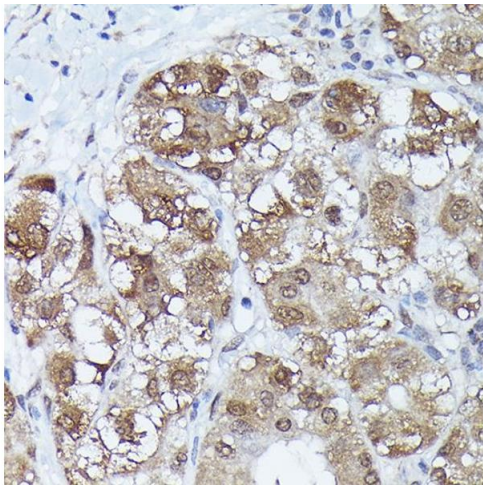
Immunohistochemistry

Image 1. Immunohistochemistry of paraffin-embedded mouse spinal cord using MT2A Rabbit pAb (ABIN3015841, ABIN3015842, ABIN3015843 and ABIN6219186) at dilution of 1:150 (40x lens). Perform high pressure antigen retrieval with 10 mM citrate buffer pH 6.0 before commencing with IHC staining protocol.



Western Blotting

Image 2. Western blot analysis of extracts of various cell lines, using MT2A Rabbit pAb (ABIN3015841, ABIN3015842, ABIN3015843 and ABIN6219186) at 1:1000 dilution. Secondary antibody: HRP Goat Anti-Rabbit IgG (H+L) (ABIN1684268 and ABIN3020597) at 1:10000 dilution. Lysates/proteins: 25 µg per lane. Blocking buffer: 3 % nonfat dry milk in TBST. Detection: ECL Basic Kit (RM00020). Exposure time: 30s.



Immunohistochemistry

Image 3. Immunohistochemistry of paraffin-embedded human liver cancer using MT2A Rabbit pAb (ABIN3015841, ABIN3015842, ABIN3015843 and ABIN6219186) at dilution of 1:150 (40x lens). Perform high pressure antigen retrieval with 10 mM citrate buffer pH 6.0 before commencing with IHC staining protocol.

Please check the [product details page](#) for more images. Overall 4 images are available for ABIN3015842.