



[Go to Product page](#)

Datasheet for ABIN3016036

## anti-Histone 3 antibody (H3K36me2)

26 Images

1 Publication

### Overview

Quantity:	100 µL
Target:	Histone 3 (H3)
Binding Specificity:	H3K36me2
Reactivity:	Human
Host:	Rabbit
Clonality:	Polyclonal
Conjugate:	This Histone 3 antibody is un-conjugated
Application:	Western Blotting (WB), Immunohistochemistry (IHC), Immunofluorescence (IF), Chromatin Immunoprecipitation (ChIP), Immunoprecipitation (IP), ChIP DNA-Sequencing (ChIP-seq)

### Product Details

Immunogen:	A synthetic methylated peptide corresponding to residues surrounding K36 of human histone H3
Isotype:	IgG
Cross-Reactivity:	Human, Mouse, Rat
Characteristics:	Methylated Antibodies
Purification:	Affinity purification

### Target Details

Target:	Histone 3 (H3)
---------	----------------

## Target Details

---

Alternative Name: Histone H3 ([H3 Products](#))

---

Background: Histones are basic nuclear proteins that are responsible for the nucleosome structure of the chromosomal fiber in eukaryotes. Nucleosomes consist of approximately 146 bp of DNA wrapped around a histone octamer composed of pairs of each of the four core histones (H2A, H2B, H3, and H4). The chromatin fiber is further compacted through the interaction of a linker histone, H1, with the DNA between the nucleosomes to form higher order chromatin structures. This gene is intronless and encodes a replication-dependent histone that is a member of the histone H3 family. Transcripts from this gene lack polyA tails, instead, they contain a palindromic termination element. This gene is located separately from the other H3 genes that are in the histone gene cluster on chromosome 6p22-p21.3.,H3.4,H3/g,H3FT,H3t,HIST3H3,Histone H3,HIST1H3A,Signal Transduction,MAPK-Erk Signaling Pathway,MAPK-P38 Signaling Pathway,Epigenetics & Nuclear Signaling,Epigenetic Modifications,Methylation,Histone H3

---

Molecular Weight: 15 kDa

---

Gene ID: 8290

---

UniProt: [Q16695](#)

---

## Application Details

---

Application Notes: WB,1:500 - 1:2000,IHC,1:50 - 1:200,IF,1:50 - 1:200,IP,1:50 - 1:200,ChIP,1:20 - 1:100,ChIP-seq,1:20 - 1:100

---

Restrictions: For Research Use only

---

## Handling

---

Buffer: PBS with 0.02 % sodium azide,50 % glycerol, pH 7.3.

---

Preservative: Sodium azide

---

Precaution of Use: This product contains Sodium azide: a POISONOUS AND HAZARDOUS SUBSTANCE which should be handled by trained staff only.

---

Storage: -20 °C

---

Storage Comment: Store at -20°C. Avoid freeze / thaw cycles.

---

## Publications

---

Product cited in:

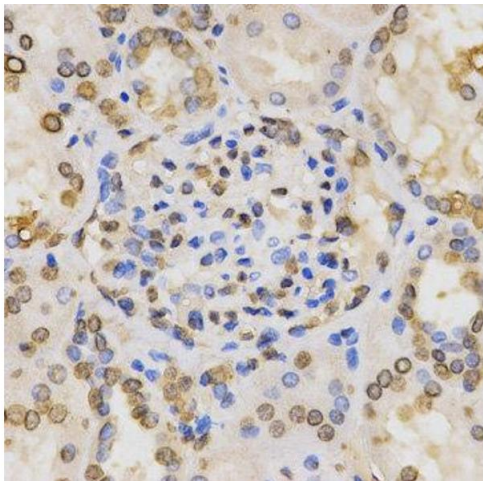
Li, Chan, Yu, Bei, Chen, Zhou, Cheng, Chen, Ziegler, Rowe, Das, Xiao: "miR-29b contributes to multiple types of muscle atrophy." in: **Nature communications**, Vol. 8, pp. 15201, (2018) ([PubMed](#)).

Wang, Hu, Xiao, Wang, Liu, Xu, Shi, Jiang, Huang, Li, Liu, Qing: "Stabilization of Notch1 by the Hsp90 Chaperone Is Crucial for T-Cell Leukemogenesis." in: **Clinical cancer research : an official journal of the American Association for Cancer Research**, Vol. 23, Issue 14, pp. 3834-3846, (2018) ([PubMed](#)).

Xiao, Yue, Su, Ren, Jiang, Li, Hu, Du, Liu, Qing: "Polo-like Kinase-1 Regulates Myc Stabilization and Activates a Feedforward Circuit Promoting Tumor Cell Survival." in: **Molecular cell**, Vol. 64, Issue 3, pp. 493-506, (2017) ([PubMed](#)).

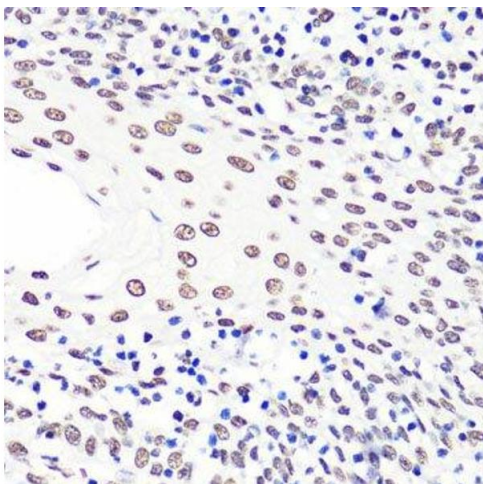
## Images

---



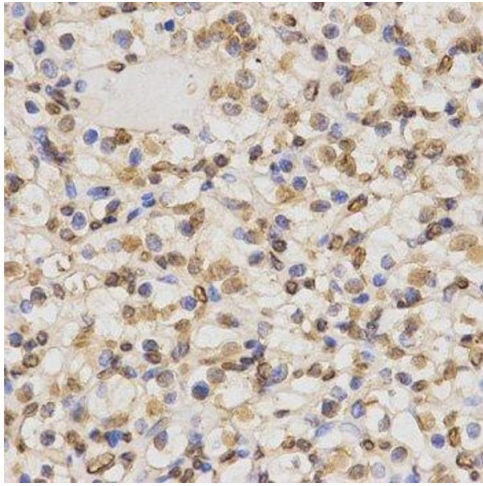
### Immunohistochemistry

**Image 1.** Immunohistochemistry of paraffin-embedded human kidney tissue using H3K36me2 antibody at dilution of 1:200 (x400 lens)



### Immunohistochemistry (Paraffin-embedded Sections)

**Image 2.** Immunohistochemistry of paraffin-embedded human tonsil using H3K36me2 antibody.



### Immunohistochemistry (Paraffin-embedded Sections)

**Image 3.** Immunohistochemistry of paraffin-embedded human kidney cancer using DiMethyl-Histone H3-K36 antibody.

Please check the [product details page](#) for more images. Overall 26 images are available for ABIN3016036.