

Datasheet for ABIN3016135

**anti-Choline Acetyltransferase antibody (AA 331-630)**[Go to Product page](#)

## 4 Images

## Overview

Quantity:	100 µL
Target:	Choline Acetyltransferase (CHAT)
Binding Specificity:	AA 331-630
Reactivity:	Human
Host:	Rabbit
Clonality:	Polyclonal
Conjugate:	This Choline Acetyltransferase antibody is un-conjugated
Application:	Western Blotting (WB), Immunohistochemistry (IHC)

## Product Details

Immunogen:	Recombinant fusion protein containing a sequence corresponding to amino acids 331-630 of human CHAT (NP_001136401.1).
Sequence:	VLVQCTEHLK KHMTQSSRKL IRADSVSELP APRRLRWKCS PEIQGHCLASS AEKLQRIVKN LDFIVYKFDN YGKTFIKKQK CSPDAFIQVA LQLAFYRLHR RLVPTYESAS IRRFQEGRVD NIRSATPEAL AFVRAVTDHK AAVPASEKLL LLKDAIRAQT AYTVMMAITGM AIDNHLLALR ELARAMCKEL PEMFMDETYL MSNRFVLSTS QVPTTTEMFC CYGPVVPNGY GACYNPQPET ILFCISSFHS CKETSSSKFA KAVEESLIDM RDLCSLLPPT ESKPLATKEK ATRPSQGHQP
Isotype:	IgG
Cross-Reactivity:	Human, Mouse, Rat
Characteristics:	Polyclonal Antibodies
Purification:	Affinity purification

## Target Details

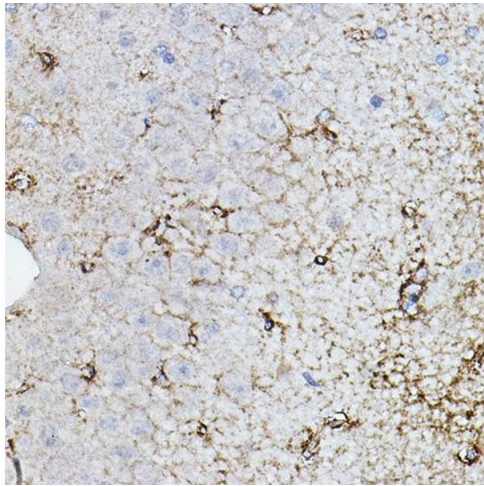
Target:	Choline Acetyltransferase (CHAT)
Alternative Name:	CHAT ( <a href="#">CHAT Products</a> )
Background:	<p>This gene encodes an enzyme which catalyzes the biosynthesis of the neurotransmitter acetylcholine. This gene product is a characteristic feature of cholinergic neurons, and changes in these neurons may explain some of the symptoms of Alzheimer's disease. Polymorphisms in this gene have been associated with Alzheimer's disease and mild cognitive impairment.</p> <p>Mutations in this gene are associated with congenital myasthenic syndrome associated with episodic apnea. Multiple transcript variants encoding different isoforms have been found for this gene, and some of these variants have been shown to encode more than one isoform.,CHAT,CHOACTASE,CMS1A,CMS1A2,CMS6,Neuroscience,Cell Type Marker,Neuron marker,CHAT</p>
Molecular Weight:	70 kDa/74 kDa/82 kDa
Gene ID:	1103
UniProt:	<a href="#">P28329</a>
Pathways:	<a href="#">Skeletal Muscle Fiber Development</a>

## Application Details

Application Notes:	WB,1:500 - 1:2000,IHC,1:50 - 1:200
Restrictions:	For Research Use only

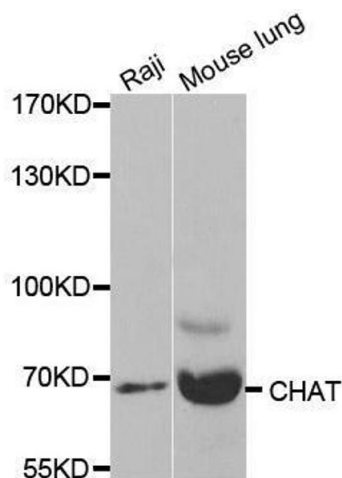
## Handling

Buffer:	PBS with 0.02 % sodium azide,50 % glycerol, pH 7.3.
Preservative:	Sodium azide
Precaution of Use:	This product contains Sodium azide: a POISONOUS AND HAZARDOUS SUBSTANCE which should be handled by trained staff only.
Storage:	-20 °C
Storage Comment:	Store at -20°C. Avoid freeze / thaw cycles.



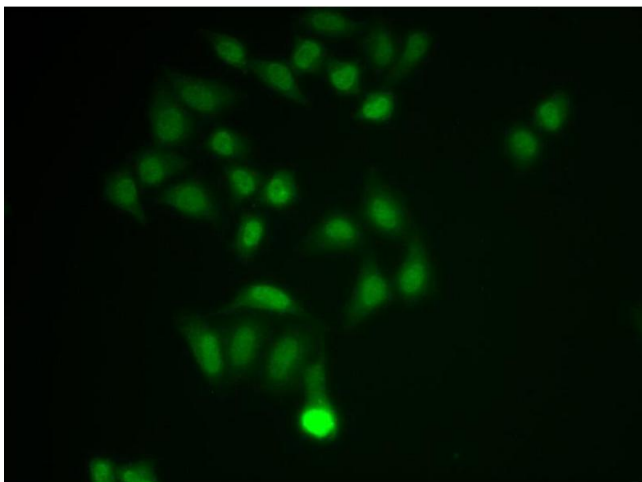
#### Immunohistochemistry

**Image 1.** Immunohistochemistry of paraffin-embedded rat brain using CHAT Rabbit pAb (ABIN3016134, ABIN3016135, ABIN3016136 and ABIN6219569) at dilution of 1:50 (40x lens). Perform high pressure antigen retrieval with 10 mM citrate buffer pH 6.0 before commencing with IHC staining protocol.



#### Western Blotting

**Image 2.** Western blot analysis of extracts of various cell lines, using CHAT antibody.



#### Immunofluorescence

**Image 3.** Immunofluorescence analysis of MCF-7 cell using CHAT antibody.

Please check the [product details page](#) for more images. Overall 4 images are available for ABIN3016135.