



[Go to Product page](#)

Datasheet for ABIN3016153
anti-PSMA2 antibody (AA 1-234)

4 Images

Overview

| | |
|----------------------|--|
| Quantity: | 100 µL |
| Target: | PSMA2 |
| Binding Specificity: | AA 1-234 |
| Reactivity: | Human |
| Host: | Rabbit |
| Clonality: | Polyclonal |
| Conjugate: | This PSMA2 antibody is un-conjugated |
| Application: | Western Blotting (WB), Immunofluorescence (IF) |

Product Details

| | |
|-------------------|---|
| Immunogen: | Recombinant fusion protein containing a sequence corresponding to amino acids 1-234 of human PSMA2 (NP_002778.1). |
| Sequence: | MAERGYSFSL TTFSPSGKLV QIEYALAAVA GGAPSVGIKA ANGVVLATEK KQKSILYDER SVHKVEPITK HIGLVYSGMG PDYRVLVHRA RKLAQQYYLV YQEPIPTAQL VQRVASVMQE YTQSGGVPRPF GVSLLICGWN EGRPYLFQSD PSGAYFAWKA TAMGKNYVNG KTFLEKRYNE DLELEDAIHT AILTLKESFE GQMTEDNIEV GICNEAGFRR LTPTEVKDYL AAIA |
| Isotype: | IgG |
| Cross-Reactivity: | Human, Mouse, Rat |
| Characteristics: | Polyclonal Antibodies |

Target Details

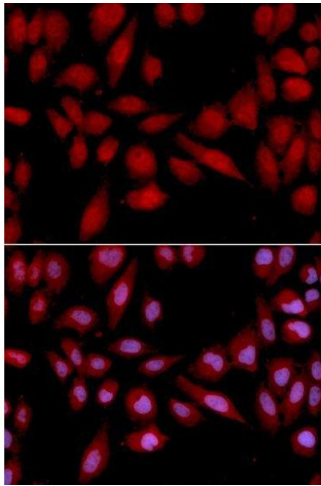
| | |
|-------------------|--|
| Target: | PSMA2 |
| Alternative Name: | PSMA2 (PSMA2 Products) |
| Background: | <p>The proteasome is a multicatalytic proteinase complex with a highly ordered ring-shaped 20S core structure. The core structure is composed of 4 rings of 28 non-identical subunits, 2 rings are composed of 7 alpha subunits and 2 rings are composed of 7 beta subunits. Proteasomes are distributed throughout eukaryotic cells at a high concentration and cleave peptides in an ATP/ubiquitin-dependent process in a non-lysosomal pathway. An essential function of a modified proteasome, the immunoproteasome, is the processing of class I MHC peptides. This gene encodes a member of the peptidase T1A family, that is a 20S core alpha subunit.,PSMA2,HC3,MU,PMSA2,PSC2,Cell Biology & Developmental Biology,Ubiquitin,PSMA2</p> |
| Molecular Weight: | 25 kDa |
| Gene ID: | 5683 |
| UniProt: | P25787 |
| Pathways: | Mitotic G1-G1/S Phases , DNA Replication , Synthesis of DNA |

Application Details

| | |
|--------------------|-----------------------------------|
| Application Notes: | WB,1:500 - 1:2000,IF,1:50 - 1:200 |
| Restrictions: | For Research Use only |

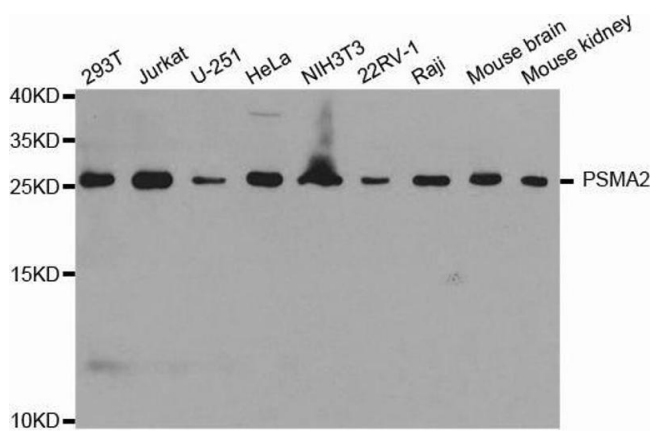
Handling

| | |
|--------------------|--|
| Buffer: | PBS with 0.02 % sodium azide,50 % glycerol, pH 7.3. |
| Preservative: | Sodium azide |
| Precaution of Use: | This product contains Sodium azide: a POISONOUS AND HAZARDOUS SUBSTANCE which should be handled by trained staff only. |
| Storage: | -20 °C |
| Storage Comment: | Store at -20°C. Avoid freeze / thaw cycles. |



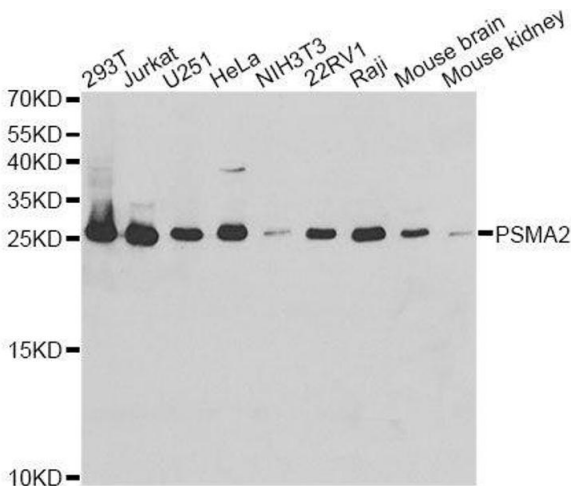
Immunofluorescence

Image 1. Immunofluorescence analysis of U2OS cell using PSMA2 antibody. Blue: DAPI for nuclear staining.



Western Blotting

Image 2. Western blot analysis of extracts of various cell lines, using PSMA2 antibody.



Western Blotting

Image 3. Western blot analysis of extracts of various cell lines, using PSMA2 antibody.

Please check the [product details page](#) for more images. Overall 4 images are available for ABIN3016153.