

Datasheet for ABIN3016156  
**anti-PSMC4 antibody (AA 1-165)**

## 3 Images

[Go to Product page](#)

## Overview

Quantity:	100 µL
Target:	PSMC4
Binding Specificity:	AA 1-165
Reactivity:	Human
Host:	Rabbit
Clonality:	Polyclonal
Conjugate:	This PSMC4 antibody is un-conjugated
Application:	Western Blotting (WB), Immunofluorescence (IF)

## Product Details

Immunogen:	Recombinant fusion protein containing a sequence corresponding to amino acids 1-165 of human PSMC4 (NP_006494.1).
Sequence:	MEEIGILVEK AQDEIPALSV SRPQTGLSFL GPEPEDLEDL YSRYKKLQQE LEFLEVQEEY IKDEQKNLKK EFLHAQEEVK RIQSIPLVIG QFLEAVDQNT AIVGSTTGSN YYVRILSTID RELLKPNASV ALHKHSNALV DVLPPPEADSS IMMLTSDQKP DVMYA
Isotype:	IgG
Cross-Reactivity:	Human, Mouse
Characteristics:	Polyclonal Antibodies

## Target Details

Target:	PSMC4
---------	-------

## Target Details

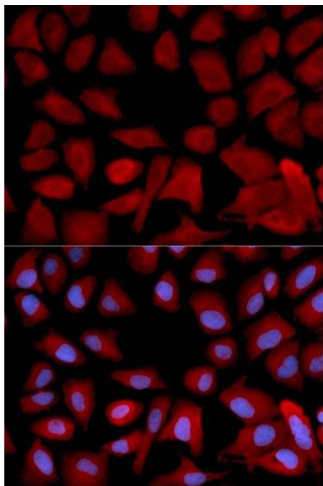
Alternative Name:	PSMC4 ( <a href="#">PSMC4 Products</a> )
Background:	<p>The 26S proteasome is a multicatalytic proteinase complex with a highly ordered structure composed of 2 complexes, a 20S core and a 19S regulator. The 20S core is composed of 4 rings of 28 non-identical subunits, 2 rings are composed of 7 alpha subunits and 2 rings are composed of 7 beta subunits. The 19S regulator is composed of a base, which contains 6 ATPase subunits and 2 non-ATPase subunits, and a lid, which contains up to 10 non-ATPase subunits. Proteasomes are distributed throughout eukaryotic cells at a high concentration and cleave peptides in an ATP/ubiquitin-dependent process in a non-lysosomal pathway. This gene encodes a member of the triple-A family of ATPases that is a component of the 19S regulatory subunit and plays a role in 26S proteasome assembly. The encoded protein interacts with gankyrin, a liver oncoprotein, and may also play a role in Parkinson's disease through interactions with synphilin-1. Alternatively spliced transcript variants encoding multiple isoforms have been observed for this gene.,PSMC4,MIP224,RPT3,S6,TBP-7,TBP7,ATPase 4,Signal Transduction,Cell Biology &amp; Developmental Biology,Ubiquitin,Endocrine &amp; Metabolism,PSMC4</p>
Molecular Weight:	43 kDa/47 kDa
Gene ID:	5704
UniProt:	<a href="#">P43686</a>
Pathways:	<a href="#">Mitotic G1-G1/S Phases</a> , <a href="#">DNA Replication</a> , <a href="#">Synthesis of DNA</a> , <a href="#">Ubiquitin Proteasome Pathway</a>

## Application Details

Application Notes:	WB,1:500 - 1:2000,IF,1:50 - 1:200
Restrictions:	For Research Use only

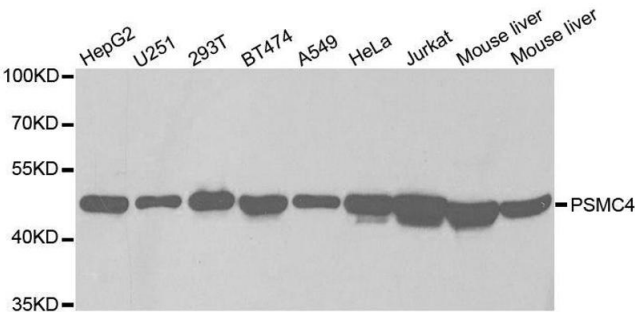
## Handling

Buffer:	PBS with 0.02 % sodium azide,50 % glycerol, pH 7.3.
Preservative:	Sodium azide
Precaution of Use:	This product contains Sodium azide: a POISONOUS AND HAZARDOUS SUBSTANCE which should be handled by trained staff only.
Storage:	-20 °C
Storage Comment:	Store at -20°C. Avoid freeze / thaw cycles.



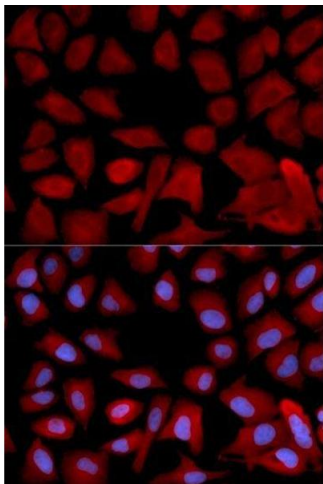
Immunofluorescence

**Image 1.** Immunofluorescence analysis of U2OS cell using PSMC4 antibody. Blue: DAPI for nuclear staining.



Western Blotting

**Image 2.** Western blot analysis of extracts of various cell lines, using PSMC4 antibody.



Immunofluorescence

**Image 3.** Immunofluorescence analysis of U2OS cells using PSMC4 antibody.