

Datasheet for ABIN3016173  
**anti-TIM3 antibody (AA 22-202)**[Go to Product page](#)

## 4 Images

## Overview

Quantity:	100 µL
Target:	TIM3 (TIM 3)
Binding Specificity:	AA 22-202
Reactivity:	Human
Host:	Rabbit
Clonality:	Polyclonal
Conjugate:	This TIM3 antibody is un-conjugated
Application:	Western Blotting (WB), Immunohistochemistry (IHC)

## Product Details

Immunogen:	Recombinant fusion protein containing a sequence corresponding to amino acids 22-202 of human TIM-3/HAVCR2 (NP_116171.3).
Sequence:	SEVEYRAEVG QNAYLPCFYT PAAPGNLVPV CWGKGACPVF ECGNVVLRTD ERDVNYWTSR YWLNGDFRKG DVSLTIENVT LADSGIYCCR IQIPGIMNDE KFNCLKVIKP AKVTPAPTRQ RDFTAAPFRM LTTRGHGPAE TQTLGSLPDI NLQISTLAN ELRDSRLAND LRDSGATIRI G
Isotype:	IgG
Cross-Reactivity:	Human, Mouse, Rat
Characteristics:	Polyclonal Antibodies
Purification:	Affinity purification

## Target Details

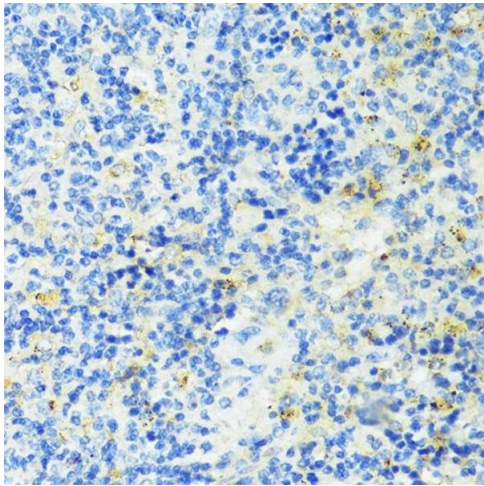
Target:	TIM3 (TIM 3)
Alternative Name:	HAVCR2 ( <a href="#">TIM 3 Products</a> )
Target Type:	Virus
Background:	<p>The protein encoded by this gene belongs to the immunoglobulin superfamily, and TIM family of proteins. CD4-positive T helper lymphocytes can be divided into types 1 (Th1) and 2 (Th2) on the basis of their cytokine secretion patterns. Th1 cells are involved in cell-mediated immunity to intracellular pathogens and delayed-type hypersensitivity reactions, whereas, Th2 cells are involved in the control of extracellular helminthic infections and the promotion of atopic and allergic diseases. This protein is a Th1-specific cell surface protein that regulates macrophage activation, and inhibits Th1-mediated auto- and alloimmune responses, and promotes immunological tolerance.,HAVCR2,CD366,HAVcr-2,KIM-3,TIM3,TIMD-3,TIMD3,Tim-3,Immunology &amp; Inflammation,Cell Intrinsic Innate Immunity Signaling Pathway,HAVCR2</p>
Molecular Weight:	16 kDa/33 kDa
Gene ID:	84868
UniProt:	<a href="#">Q8TDQ0</a>
Pathways:	<a href="#">Regulation of Lipid Metabolism by PPARalpha</a> , <a href="#">Cancer Immune Checkpoints</a>

## Application Details

Application Notes:	WB,1:500 - 1:1000,IHC,1:50 - 1:200
Restrictions:	For Research Use only

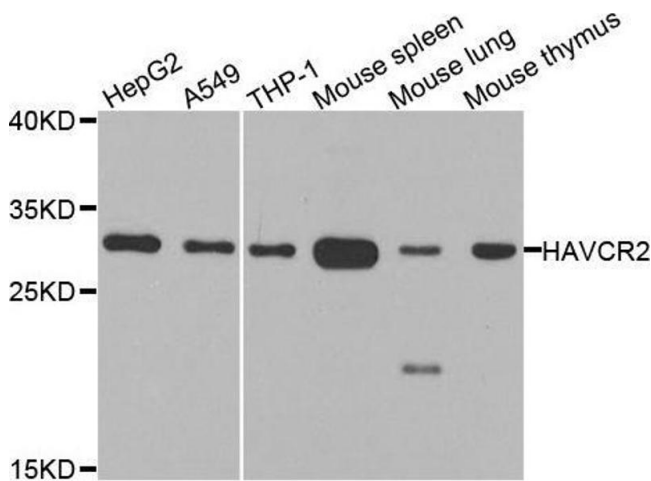
## Handling

Buffer:	PBS with 0.02 % sodium azide,50 % glycerol, pH 7.3.
Preservative:	Sodium azide
Precaution of Use:	This product contains Sodium azide: a POISONOUS AND HAZARDOUS SUBSTANCE which should be handled by trained staff only.
Storage:	-20 °C
Storage Comment:	Store at -20°C. Avoid freeze / thaw cycles.



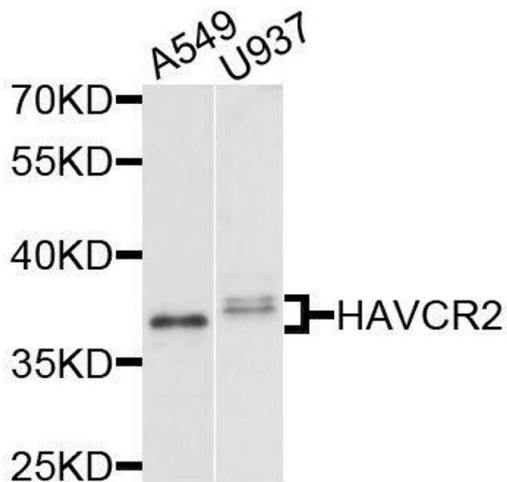
### Immunohistochemistry

**Image 1.** Immunohistochemistry of paraffin-embedded mouse spleen using TIM-3/H antibody (ABIN3016172, ABIN3016173, ABIN3016174, ABIN1680159 and ABIN6219599) at dilution of 1:100 (40x lens). Perform microwave antigen retrieval with 10 mM PBS buffer pH 7.2 before commencing with IHC staining protocol.



### Western Blotting

**Image 2.** Western blot analysis of extracts of various cell lines, using HAVCR2 antibody.



### Western Blotting

**Image 3.** Western blot analysis of extracts of various cell lines, using HAVCR2 antibody.

Please check the [product details page](#) for more images. Overall 4 images are available for ABIN3016173.