

Datasheet for ABIN3016215  
**anti-DNASE1 antibody (AA 22-282)**

## 4 Images

[Go to Product page](#)

## Overview

Quantity:	100 µL
Target:	DNASE1
Binding Specificity:	AA 22-282
Reactivity:	Human
Host:	Rabbit
Clonality:	Polyclonal
Conjugate:	This DNASE1 antibody is un-conjugated
Application:	Western Blotting (WB)

## Product Details

Immunogen:	Recombinant fusion protein containing a sequence corresponding to amino acids 22-282 of human DNASE1 (NP_005214.2).
Sequence:	SLKIAAFNIQ TFGETKMSNA TLVSYIVQIL SRYDIALVQE VRDSHLTAVG KLLDNLNQDA PDTYHYVVSE PLGRNSYKER YLFVYRPDQV SAVDSYYYDD GCEPCGNDTF NREPAIVRFF SRFTEVREFA IVPLHAAPGD AVAEIDALYD VYLDVQEKWG LEDVMLMGDF NAGCSYVRPS QWSSIRLWTS PTFQWLIPDS ADTTATPTHC AYDRIVVAGM LLRGAVVPDS ALPFNFQAAY GLSDQLAQAI SDHYPVEVML K
Isotype:	IgG
Cross-Reactivity:	Human, Mouse, Rat
Characteristics:	Polyclonal Antibodies
Purification:	Affinity purification

## Target Details

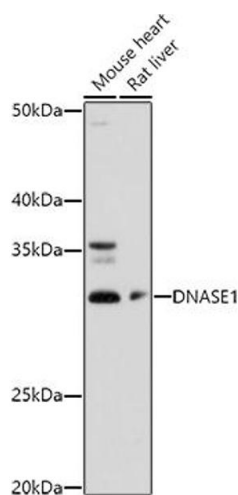
Target:	DNASE1
Alternative Name:	DNASE1 ( <a href="#">DNASE1 Products</a> )
Background:	<p>This gene encodes a member of the DNase family. This protein is stored in the zymogen granules of the nuclear envelope and functions by cleaving DNA in an endonucleolytic manner. At least six autosomal codominant alleles have been characterized, DNASE1*1 through DNASE1*6, and the sequence of DNASE1*2 represented in this record. Mutations in this gene have been associated with systemic lupus erythematosus (SLE), an autoimmune disease. A recombinant form of this protein is used to treat the one of the symptoms of cystic fibrosis by hydrolyzing the extracellular DNA in sputum and reducing its viscosity. Alternate transcriptional splice variants of this gene have been observed but have not been thoroughly characterized.,DNASE1,DNL1,DRNI,Epigenetics &amp; Nuclear Signaling,Cell Biology &amp; Developmental Biology,Apoptosis,Cell Cycle,Endocrine &amp; Metabolism,DNASE1</p>
Molecular Weight:	19 kDa/31 kDa
Gene ID:	1773
UniProt:	<a href="#">P24855</a>

## Application Details

Application Notes:	WB,1:500 - 1:2000
Restrictions:	For Research Use only

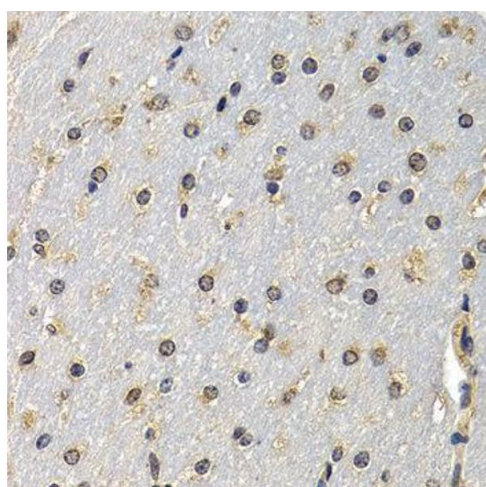
## Handling

Buffer:	PBS with 0.02 % sodium azide,50 % glycerol, pH 7.3.
Preservative:	Sodium azide
Precaution of Use:	This product contains Sodium azide: a POISONOUS AND HAZARDOUS SUBSTANCE which should be handled by trained staff only.
Storage:	-20 °C
Storage Comment:	Store at -20°C. Avoid freeze / thaw cycles.



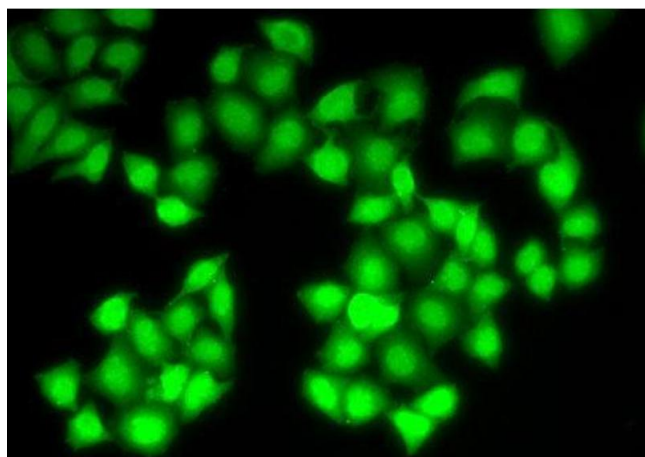
### Western Blotting

**Image 1.** Western blot analysis of extracts of various cell lines, using DN antibody (ABIN3016214, ABIN3016215, ABIN3016216, ABIN1679557 and ABIN6219627) at 1:1000 dilution. Secondary antibody: HRP Goat Anti-Rabbit IgG (H+L) (ABIN1684268 and ABIN3020597) at 1:10000 dilution. Lysates/proteins: 25 µg per lane. Blocking buffer: 3 % nonfat dry milk in TBST. Detection: ECL Basic Kit (RM00020). Exposure time: 180s.



### Immunohistochemistry

**Image 2.**



### Immunofluorescence

**Image 3.**

Please check the [product details page](#) for more images. Overall 4 images are available for ABIN3016215.