

Datasheet for ABIN3016232  
**anti-ESR2 antibody (AA 1-280)**



[Go to Product page](#)

3 Images

## Overview

Quantity:	100 µL
Target:	ESR2
Binding Specificity:	AA 1-280
Reactivity:	Human
Host:	Rabbit
Clonality:	Polyclonal
Conjugate:	This ESR2 antibody is un-conjugated
Application:	Western Blotting (WB)

## Product Details

Immunogen:	Recombinant fusion protein containing a sequence corresponding to amino acids 1-280 of human Estrogen Receptor beta (NP_001201832.1).
Sequence:	MDIKNSPSSL NSPSSYNCSQ SILPLEHGSI YIPSSYVDSH HEYPAMTFYS PAVMNYISIPS NVTNLEGGPG RQTTSPNVLW PTPGHLSPV VHRQLSHLYA EPQKSPWCEA RSLEHTLPVN RETLKRKVSQ NRCASPVTGP GSKRDAHFA VCSYASGYH YGVWSCEGCK AFFKRSIQGH NDYICPATNQ CTIDKNRRKS CQACRLRKY EVGMVKCGSR RERCGYRLVR RQRSADEQLH CAGKAKRSGG HAPRVRELLL DALSPQLVL TLLEAEPHV
Isotype:	IgG
Cross-Reactivity:	Human, Mouse, Rat
Characteristics:	Polyclonal Antibodies
Purification:	Affinity purification

## Target Details

---

Target:	ESR2
Alternative Name:	ESR2 ( <a href="#">ESR2 Products</a> )
Background:	<p>This gene encodes a member of the family of estrogen receptors and superfamily of nuclear receptor transcription factors. The gene product contains an N-terminal DNA binding domain and C-terminal ligand binding domain and is localized to the nucleus, cytoplasm, and mitochondria. Upon binding to 17beta-estradiol or related ligands, the encoded protein forms homo- or hetero-dimers that interact with specific DNA sequences to activate transcription. Some isoforms dominantly inhibit the activity of other estrogen receptor family members. Several alternatively spliced transcript variants of this gene have been described, but the full-length nature of some of these variants has not been fully characterized.,ESR2,ER-BETA,ESR-BETA,ESRB,ESTRB,Erb,NR3A2,Epigenetics &amp; Nuclear Signaling,Transcription Factors,Nuclear Receptor Signaling,Nuclear hormone receptors,Cancer,Tumor biomarkers,Signal Transduction,MAPK-Erk Signaling Pathway,Endocrine &amp; Metabolism,Endocrine and metabolic diseases,Diabetes,Metabolic disorders,Obesity,Neuroscience,ESR2</p>
Molecular Weight:	35-59 kDa
Gene ID:	2100
UniProt:	<a href="#">Q92731</a>
Pathways:	<a href="#">Nuclear Receptor Transcription Pathway</a> , <a href="#">EGFR Signaling Pathway</a> , <a href="#">Intracellular Steroid Hormone Receptor Signaling Pathway</a> , <a href="#">Steroid Hormone Mediated Signaling Pathway</a> , <a href="#">Regulation of Intracellular Steroid Hormone Receptor Signaling</a>

## Application Details

---

Application Notes:	WB,1:500 - 1:2000
Restrictions:	For Research Use only

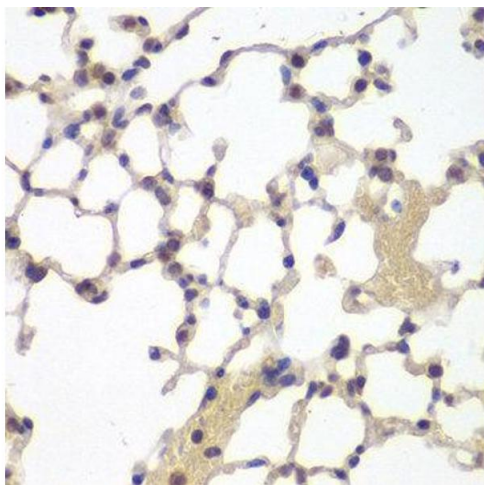
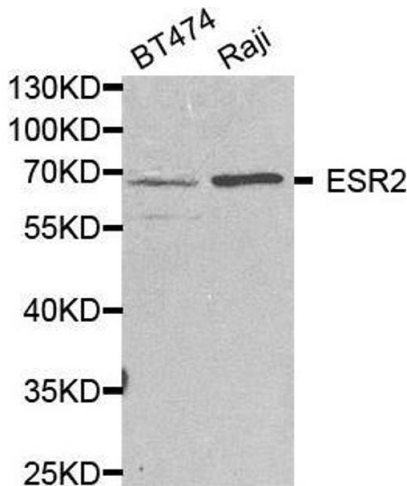
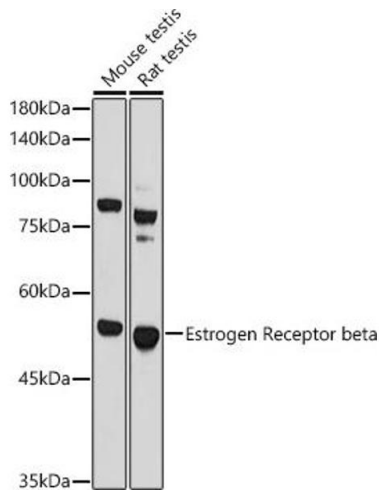
## Handling

---

Buffer:	PBS with 0.02 % sodium azide,50 % glycerol, pH 7.3.
Preservative:	Sodium azide
Precaution of Use:	This product contains Sodium azide: a POISONOUS AND HAZARDOUS SUBSTANCE which should be handled by trained staff only.
Storage:	-20 °C

Storage Comment: Store at -20°C. Avoid freeze / thaw cycles.

Images



Western Blotting

**Image 1.** Western blot analysis of extracts of various cell lines, using Estrogen Receptor beta antibody (ABIN3016231, ABIN3016232, ABIN3016233 and ABIN6219642) at 1:1000 dilution. Secondary antibody: HRP Goat Anti-Rabbit IgG (H+L) (ABIN1684268 and ABIN3020597) at 1:10000 dilution. Lysates/proteins: 25 µg per lane. Blocking buffer: 3 % nonfat dry milk in TBST. Detection: ECL Basic Kit (RM00020). Exposure time: 60s.

Western Blotting

**Image 2.** Western blot analysis of extracts of various cell lines, using ESR2 antibody.

Immunohistochemistry

**Image 3.**