

Datasheet for ABIN3016295 anti-Betacellulin antibody (AA 32-178)



[Go to Product page](#)

1 Image

Overview

Quantity:	100 µL
Target:	Betacellulin (BTC)
Binding Specificity:	AA 32-178
Reactivity:	Human
Host:	Rabbit
Clonality:	Polyclonal
Conjugate:	This Betacellulin antibody is un-conjugated
Application:	Western Blotting (WB)

Product Details

Immunogen:	Recombinant fusion protein containing a sequence corresponding to amino acids 32-178 of human BTC (NP_001720.1).
Sequence:	DGNSTRSPET NGLLCGDPEE NCAATTTQSK RKGHFSRCPK QYKHYCIKGR CRFVVAEQTP SCVCDEGYIG ARCERVDLFY LRGDRGQILV ICLIAVMVVF IILVIGVCTC CHPLRKRRKR KKKEEEMETL GKDITPINED IEETNIA
Isotype:	IgG
Cross-Reactivity:	Human, Mouse, Rat
Characteristics:	Polyclonal Antibodies
Purification:	Affinity purification

Target Details

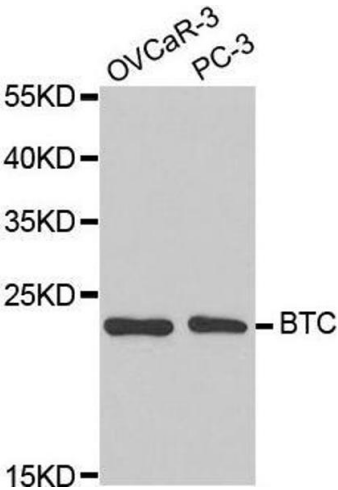
Target:	Betacellulin (BTC)
Alternative Name:	BTC (BTC Products)
Background:	<p>This gene encodes a member of the epidermal growth factor (EGF) family of proteins. Alternative splicing results in multiple transcript variants, at least one of which encodes a preproprotein that is proteolytically processed to generate the secreted growth factor. A secreted form and a membrane-anchored form of this protein bind to multiple different EGF receptors. This protein promotes pancreatic cell proliferation and insulin secretion, as well as retinal vascular permeability. Mutations in this gene may be associated with type 2 diabetes in human patients.,BTC,Signal Transduction,ErbB-HER Signaling Pathway,Cell Biology & Developmental Biology,Growth factor,EGF,BTC</p>
Molecular Weight:	19 kDa
Gene ID:	685
UniProt:	P35070
Pathways:	RTK Signaling , Fc-epsilon Receptor Signaling Pathway , EGFR Signaling Pathway , Neurotrophin Signaling Pathway

Application Details

Application Notes:	WB,1:500 - 1:2000
Restrictions:	For Research Use only

Handling

Buffer:	PBS with 0.02 % sodium azide,50 % glycerol, pH 7.3.
Preservative:	Sodium azide
Precaution of Use:	This product contains Sodium azide: a POISONOUS AND HAZARDOUS SUBSTANCE which should be handled by trained staff only.
Storage:	-20 °C
Storage Comment:	Store at -20°C. Avoid freeze / thaw cycles.



Western Blotting

Image 1. Western blot analysis of extracts of various cell lines, using BTC antibody.