

Datasheet for ABIN3016405  
**anti-Cytokeratin 5 antibody**

## 6 Images

[Go to Product page](#)

## Overview

Quantity:	100 µL
Target:	Cytokeratin 5 (KRT5)
Reactivity:	Human
Host:	Rabbit
Clonality:	Polyclonal
Conjugate:	This Cytokeratin 5 antibody is un-conjugated
Application:	Western Blotting (WB), Immunohistochemistry (IHC), Immunofluorescence (IF), Immunoprecipitation (IP)

## Product Details

Immunogen:	Recombinant protein of human Cytokeratin 5 (Cytokeratin 5 (KRT5))
Isotype:	IgG
Cross-Reactivity:	Human, Mouse
Characteristics:	Polyclonal Antibodies

## Target Details

Target:	Cytokeratin 5 (KRT5)
Alternative Name:	KRT5 ( <a href="#">KRT5 Products</a> )
Background:	The protein encoded by this gene is a member of the keratin gene family. The type II cytokeratins consist of basic or neutral proteins which are arranged in pairs of heterotypic keratin chains coexpressed during differentiation of simple and stratified epithelial tissues. This

## Target Details

type II cytokeratin is specifically expressed in the basal layer of the epidermis with family member KRT14. Mutations in these genes have been associated with a complex of diseases termed epidermolysis bullosa simplex. The type II cytokeratins are clustered in a region of chromosome 12q12-q13.,KRT5,CK5,DDD,DDD1,EBS2,K5,KRT5A,keratin 5,Signal Transduction,Cell Biology & Developmental Biology,Cytoskeleton,Intermediate Filaments,Extracellular Matrix,Cytokeratin,Keratin,KRT5

Molecular Weight: 62 kDa

Gene ID: 3852

UniProt: [P13647](#)

## Application Details

Application Notes: WB,1:500 - 1:2000,IHC,1:50 - 1:200,IF,1:50 - 1:200,IP,1:50 - 1:200

Restrictions: For Research Use only

## Handling

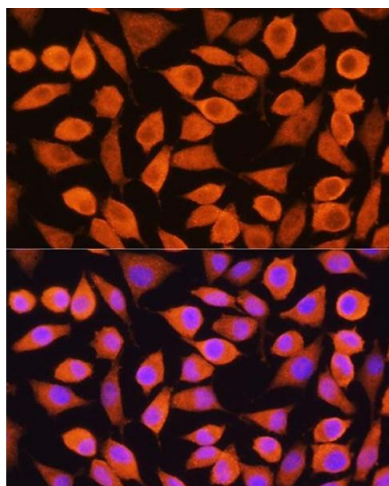
Buffer: PBS with 0.02 % sodium azide,50 % glycerol, pH 7.3.

Preservative: Sodium azide

Precaution of Use: This product contains Sodium azide: a POISONOUS AND HAZARDOUS SUBSTANCE which should be handled by trained staff only.

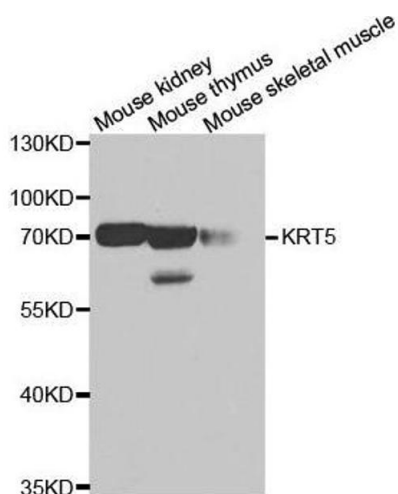
Storage: -20 °C

Storage Comment: Store at -20°C. Avoid freeze / thaw cycles.



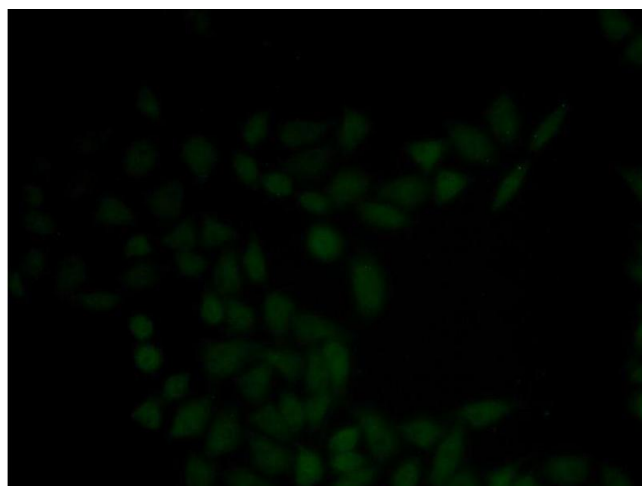
#### Immunofluorescence

**Image 1.** Immunofluorescence analysis of L929 cells using Cytokeratin 5 (Cytokeratin 5 (KRT5)) Rabbit pAb (ABIN3016404, ABIN3016405, ABIN3016406 and ABIN6219743) at dilution of 1:100. Blue: DAPI for nuclear staining.



#### Western Blotting

**Image 2.** Western blot analysis of extracts of various cell lines, using KRT5 antibody.



#### Immunofluorescence

**Image 3.** Immunofluorescence analysis of HeLa cell using KRT5 antibody

Please check the [product details page](#) for more images. Overall 6 images are available for ABIN3016405.