

Datasheet for ABIN3016460

anti-CCRK antibody

5 Images



[Go to Product page](#)

Overview

Quantity:	100 µL
Target:	CCRK (CDK20)
Reactivity:	Human
Host:	Rabbit
Clonality:	Polyclonal
Conjugate:	This CCRK antibody is un-conjugated
Application:	Immunohistochemistry (IHC)

Product Details

Immunogen:	A synthetic peptide of human CDK20
Isotype:	IgG
Cross-Reactivity:	Rat
Characteristics:	Polyclonal Antibodies
Purification:	Affinity purification

Target Details

Target:	CCRK (CDK20)
Alternative Name:	CDK20 (CDK20 Products)
Background:	The protein encoded by this gene contains a kinase domain most closely related to the cyclin-dependent protein kinases. The encoded kinase may activate cyclin-dependent kinase 2 and is

Target Details

involved in cell growth. Alternatively spliced transcript variants encoding distinct isoforms have been reported.,CDK20,CCRK,CDCH,P42,PNQALRE,Epigenetics & Nuclear Signaling,Signal Transduction,Kinase,Cell Biology & Developmental Biology,Cell Cycle,CDK20

Molecular Weight: 27 kDa/30 kDa/36 kDa/37 kDa/38 kDa

Gene ID: 23552

UniProt: [Q8IZL9](#)

Application Details

Application Notes: IHC,1:50 - 1:100

Restrictions: For Research Use only

Handling

Buffer: PBS with 0.02 % sodium azide,50 % glycerol, pH 7.3.

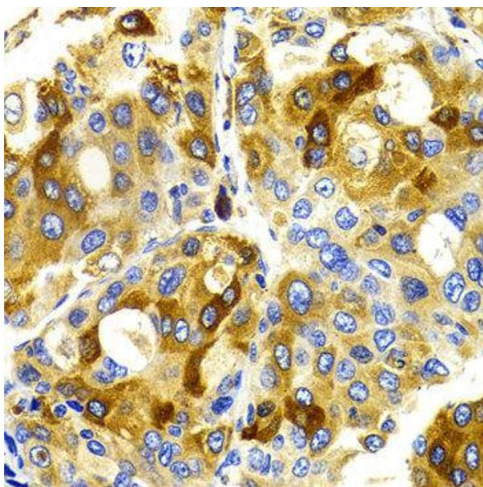
Preservative: Sodium azide

Precaution of Use: This product contains Sodium azide: a POISONOUS AND HAZARDOUS SUBSTANCE which should be handled by trained staff only.

Storage: -20 °C

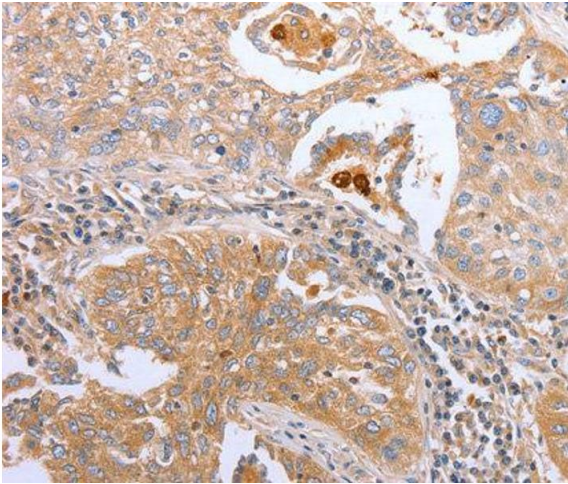
Storage Comment: Store at -20°C. Avoid freeze / thaw cycles.

Images



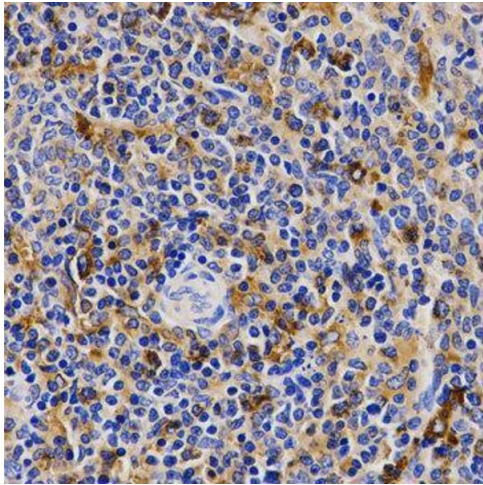
Immunohistochemistry

Image 1.



Immunohistochemistry

Image 2.



Immunohistochemistry

Image 3.

Please check the [product details page](#) for more images. Overall 5 images are available for ABIN3016460.