



[Go to Product page](#)

Datasheet for ABIN3016483
anti-CLEC4D antibody (AA 39-215)

4 Images

Overview

Quantity:	100 µL
Target:	CLEC4D
Binding Specificity:	AA 39-215
Reactivity:	Human
Host:	Rabbit
Clonality:	Polyclonal
Conjugate:	This CLEC4D antibody is un-conjugated
Application:	Western Blotting (WB), Immunofluorescence (IF)

Product Details

Immunogen:	Recombinant fusion protein containing a sequence corresponding to amino acids 39-215 of human CLEC4D (NP_525126.2).
Sequence:	CLVTHHNF SR CKRGTGVHKL EHHAKLKCIK EKSELKSAEG STWNCCPIDW RAFQSNCYFP LTDNKTWAES ERNCSGMGAH LMTISTEAEQ NFIIQLDRR LSYFLGLRDE NAKGQWRWVD QTPFNPRRVF WHKNEPDNSQ GENCVVLVYN QDKWAWNDVP CNFEASRICK IPGTTLN
Isotype:	IgG
Cross-Reactivity:	Human, Mouse, Rat
Characteristics:	Polyclonal Antibodies
Purification:	Affinity purification

Target Details

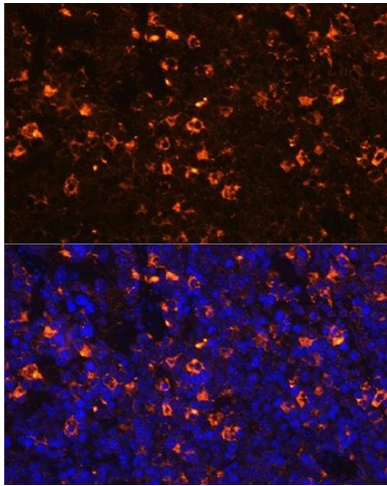
Target:	CLEC4D
Alternative Name:	CLEC4D (CLEC4D Products)
Background:	This gene encodes a member of the C-type lectin/C-type lectin-like domain (CTL/CTLD) superfamily. Members of this family share a common protein fold and have diverse functions, such as cell adhesion, cell-cell signalling, glycoprotein turnover, and roles in inflammation and immune response. This gene is closely linked to other CTL/CTLD superfamily members on chromosome 12p13 in the natural killer gene complex region.,CLEC4D,CD368,CLEC-6,CLEC6,CLECSF8,MCL,MPCL,Immunology & Inflammation,Cell Intrinsic Innate Immunity Signaling Pathway,CLEC4D
Molecular Weight:	24 kDa
Gene ID:	338339
UniProt:	Q8WXI8

Application Details

Application Notes:	WB,1:1000 - 1:4000,IF,1:50 - 1:200
Restrictions:	For Research Use only

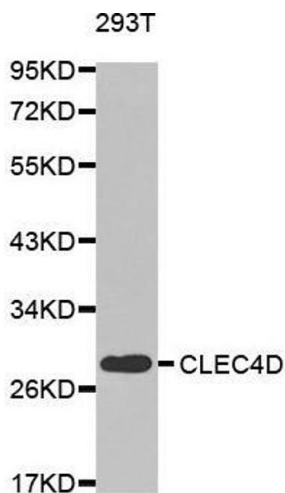
Handling

Buffer:	PBS with 0.02 % sodium azide,50 % glycerol, pH 7.3.
Preservative:	Sodium azide
Precaution of Use:	This product contains Sodium azide: a POISONOUS AND HAZARDOUS SUBSTANCE which should be handled by trained staff only.
Storage:	-20 °C
Storage Comment:	Store at -20°C. Avoid freeze / thaw cycles.



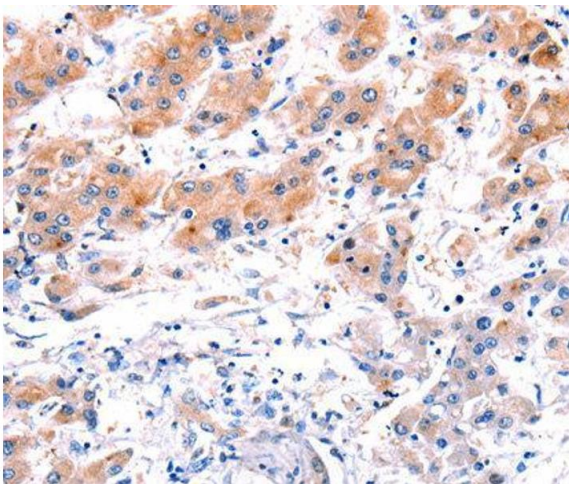
Immunofluorescence

Image 1. Immunofluorescence analysis of mouse spleen using CLEC4D Rabbit pAb (ABIN3016482, ABIN3016483, ABIN3016484 and ABIN6219759) at dilution of 1:100 (40x lens). Blue: DAPI for nuclear staining.



Western Blotting

Image 2. Western blot analysis of extracts of 293T cell line, using CLEC4D antibody.



Immunohistochemistry

Image 3.

Please check the [product details page](#) for more images. Overall 4 images are available for ABIN3016483.