

Datasheet for ABIN3016522

**anti-EGF antibody**

## 4 Images

[Go to Product page](#)

## Overview

Quantity:	100 µL
Target:	EGF
Reactivity:	Human
Host:	Rabbit
Clonality:	Polyclonal
Conjugate:	This EGF antibody is un-conjugated
Application:	Western Blotting (WB), Dot Blot (DB)

## Product Details

Immunogen:	Recombinant protein of human EGF
Isotype:	IgG
Cross-Reactivity:	Human, Mouse
Characteristics:	Polyclonal Antibodies
Purification:	Affinity purification

## Target Details

Target:	EGF
Alternative Name:	EGF ( <a href="#">EGF Products</a> )
Background:	This gene encodes a member of the epidermal growth factor superfamily. The encoded preproprotein is proteolytically processed to generate the 53-amino acid epidermal growth

## Target Details

factor peptide. This protein acts a potent mitogenic factor that plays an important role in the growth, proliferation and differentiation of numerous cell types. This protein acts by binding with high affinity to the cell surface receptor, epidermal growth factor receptor. Defects in this gene are the cause of hypomagnesemia type 4. Dysregulation of this gene has been associated with the growth and progression of certain cancers. Alternative splicing results in multiple transcript variants, at least one of which encodes a preproprotein that is proteolytically processed.,EGF,HOMG4,URG,Cancer,Signal Transduction,ErbB-HER Signaling Pathway,Cell Biology & Developmental Biology,Growth factor,EGF,Immunology & Inflammation,IL-6 Receptor Signaling Pathway,NF-kB Signaling Pathway,Cardiovascular,Angiogenesis,EGF

Molecular Weight: 129 kDa/133 kDa

Gene ID: 1950

UniProt: [P01133](#)

Pathways: [NF-kappaB Signaling](#), [RTK Signaling](#), [Fc-epsilon Receptor Signaling Pathway](#), [EGFR Signaling Pathway](#), [Neurotrophin Signaling Pathway](#), [Regulation of Carbohydrate Metabolic Process](#), [Hepatitis C](#), [Protein targeting to Nucleus](#), [Interaction of EGFR with phospholipase C-gamma](#), [Thromboxane A2 Receptor Signaling](#), [EGFR Downregulation](#)

## Application Details

Application Notes: DB,1:500 - 1:2000,WB,1:500 - 1:2000

Restrictions: For Research Use only

## Handling

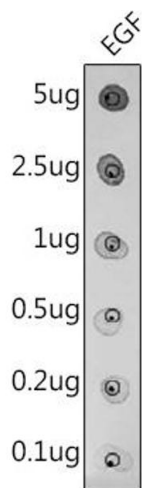
Buffer: PBS with 0.02 % sodium azide,50 % glycerol, pH 7.3.

Preservative: Sodium azide

Precaution of Use: This product contains Sodium azide: a POISONOUS AND HAZARDOUS SUBSTANCE which should be handled by trained staff only.

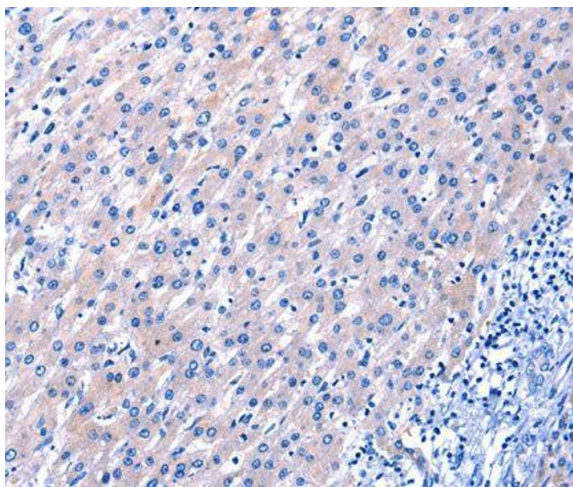
Storage: -20 °C

Storage Comment: Store at -20°C. Avoid freeze / thaw cycles.



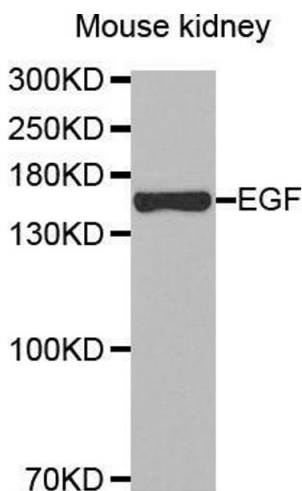
### Dot Blot

**Image 1.** Dot-blot analysis of purified mature EGF using EGF antibody(ABIN3016521, ABIN3016522, ABIN3016523 and ABIN6219771)at 1:500 dilution.



### Immunohistochemistry

**Image 2.**



### Western Blotting

**Image 3.**

Please check the [product details page](#) for more images. Overall 4 images are available for ABIN3016522.