

Datasheet for ABIN3016599  
**anti-IGF2BP3 antibody (AA 1-200)**

## 5 Images

[Go to Product page](#)

## Overview

Quantity:	100 µL
Target:	IGF2BP3
Binding Specificity:	AA 1-200
Reactivity:	Human
Host:	Rabbit
Clonality:	Polyclonal
Conjugate:	This IGF2BP3 antibody is un-conjugated
Application:	Western Blotting (WB)

## Product Details

Immunogen:	Recombinant fusion protein containing a sequence corresponding to amino acids 1-200 of human IGF2BP3 (NP_006538.2).
Sequence:	MNKLYIGNLS ENAAPSDLES IFKDAKIPVS GPFLVKTGYA FVDCPDESWA LKAIEALSGK IELHGKPIEV EHSVPKRQRI RKLQIRNIPP HLQWEVLDSL LVQYGVVESC EQVNTDSETA VVNVTYSSKD QARQALDKLN GFQLENFTLK VAYIPDEMAA QQNPLQQPRG RRGLGQRGSS RQGSPGSVSK QKPCDLPLRL
Isotype:	IgG
Cross-Reactivity:	Human, Mouse, Rat
Characteristics:	Polyclonal Antibodies
Purification:	Affinity purification

## Target Details

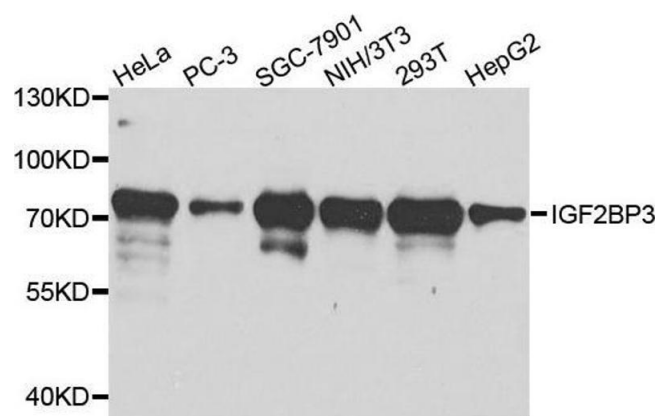
Target:	IGF2BP3
Alternative Name:	IGF2BP3 ( <a href="#">IGF2BP3 Products</a> )
Background:	The protein encoded by this gene is primarily found in the nucleolus, where it can bind to the 5' UTR of the insulin-like growth factor II leader 3 mRNA and may repress translation of insulin-like growth factor II during late development. The encoded protein contains several KH domains, which are important in RNA binding and are known to be involved in RNA synthesis and metabolism. A pseudogene exists on chromosome 7, and there are putative pseudogenes on other chromosomes.,IGF2BP3,CT98,IMP-3,IMP3,KOC,KOC1,VICKZ3,Epigenetics & Nuclear Signaling,RNA Binding,Cancer,Tumor biomarkers,IGF2BP3
Molecular Weight:	21 kDa/63 kDa
Gene ID:	10643
UniProt:	<a href="#">O00425</a>

## Application Details

Application Notes:	WB,1:500 - 1:2000
Restrictions:	For Research Use only

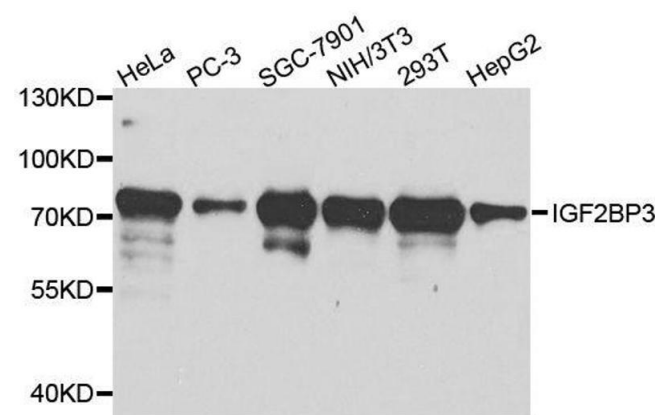
## Handling

Buffer:	PBS with 0.02 % sodium azide,50 % glycerol, pH 7.3.
Preservative:	Sodium azide
Precaution of Use:	This product contains Sodium azide: a POISONOUS AND HAZARDOUS SUBSTANCE which should be handled by trained staff only.
Storage:	-20 °C
Storage Comment:	Store at -20°C. Avoid freeze / thaw cycles.



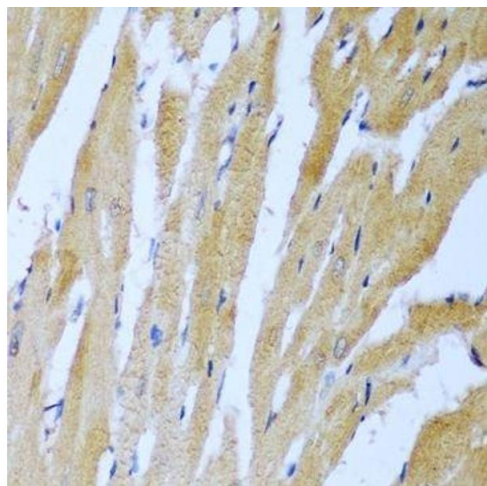
#### Western Blotting

**Image 1.** Western blot analysis of extracts of various cell lines, using IGF2BP3 antibody.



#### Western Blotting

**Image 2.** Western blot analysis of extracts of various cell lines, using IGF2BP3 antibody.



#### Immunohistochemistry (Paraffin-embedded Sections)

**Image 3.** Immunohistochemistry of paraffin-embedded rat heart using IGF2BP3 antibody.

Please check the [product details page](#) for more images. Overall 5 images are available for ABIN3016599.