

Datasheet for ABIN301660
anti-Acsl3 antibody (N-Term)



[Go to Product page](#)

2 Images

Overview

Quantity:	50 µg
Target:	Acsl3
Binding Specificity:	N-Term
Reactivity:	Human
Host:	Rabbit
Clonality:	Polyclonal
Conjugate:	This Acsl3 antibody is un-conjugated
Application:	Western Blotting (WB), ELISA, Immunohistochemistry (IHC), Immunohistochemistry (Paraffin-embedded Sections) (IHC (p))

Product Details

Brand:	IHC-plus™
Immunogen:	Synthetic peptide from human ACSL3. Type of Immunogen: Synthetic peptide
Specificity:	Synthetic peptide corresponding to N-terminal residues of human FACL3(long-chain fatty-acid-Coenzyme A ligase 3)
Purification:	Immunoaffinity purified

Target Details

Target:	Acsl3
---------	-------

Target Details

Alternative Name: [ACSL3 \(Acsl3 Products\)](#)

Background: Name/Gene ID: ACSL3

Synonyms: ACSL3, ACS3, LACS3, PRO2194, Lignoceroyl-CoA synthase, FACL3, LACS 3

Gene ID: 2181

UniProt: [O95573](#)

Pathways: [SARS-CoV-2 Protein Interactome](#)

Application Details

Application Notes: Approved: ELISA (1 µg/mL), IHC, IHC-P (20 µg/mL), WB (1 µg/mL)

Usage: Immunohistochemistry: This antibody was validated for use in immunohistochemistry on a panel of 21 formalin-fixed, paraffin-embedded (FFPE) human tissues after heat induced antigen retrieval in pH 6.0 citrate buffer. After incubation with the primary antibody, slides were incubated with biotinylated secondary antibody, followed by alkaline phosphatase-streptavidin and chromogen. The stained slides were evaluated by a pathologist to confirm staining specificity. The optimal working concentration for this antibody was determined to be 20 µg/mL.

Comment: Target Species of Antibody: Human

Restrictions: For Research Use only

Handling

Format: Liquid

Concentration: Lot specific

Buffer: PBS, 0.01 % sodium azide, 50 % glycerol.

Preservative: Sodium azide

Precaution of Use: This product contains Sodium azide: a POISONOUS AND HAZARDOUS SUBSTANCE which should be handled by trained staff only.

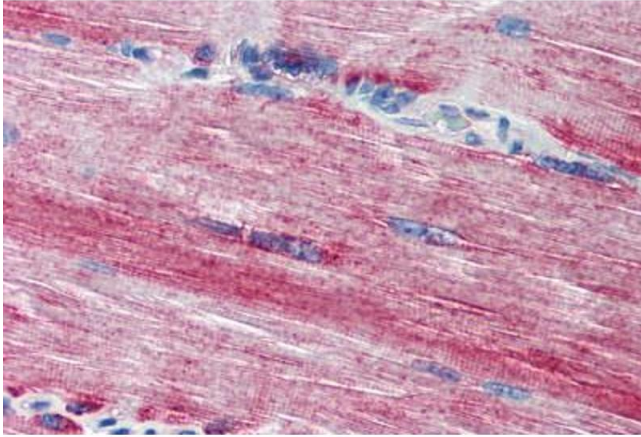
Handling Advice: Avoid repeated freezing and thawing.

Storage: 4 °C, -20 °C

Handling

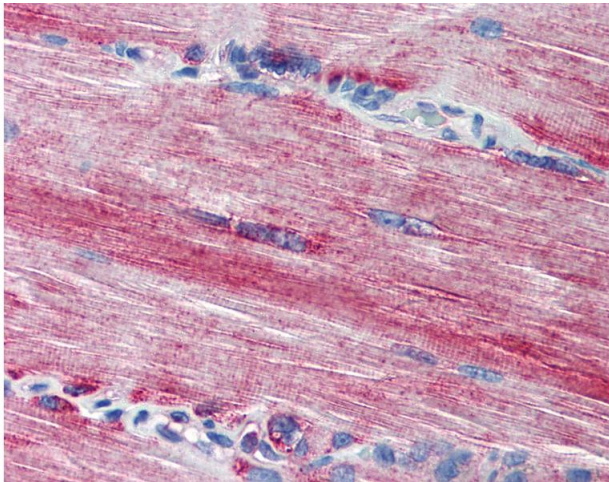
Storage Comment: 4°C or -20°C, Avoid freeze-thaw cycles.

Images



Immunohistochemistry (Paraffin-embedded Sections)

Image 1. Human Skeletal Muscle (formalin-fixed, paraffin-embedded) stained with ACSL3 antibody ABIN301660 at 20 ug/ml followed by biotinylated goat anti-rabbit IgG secondary antibody ABIN481713, alkaline phosphatase-streptavidin and chromogen.



Immunohistochemistry

Image 2. Anti-ACSL3 antibody IHC of human skeletal muscle. Immunohistochemistry of formalin-fixed, paraffin-embedded tissue after heat-induced antigen retrieval. Antibody concentration 20 ug/ml.