

Datasheet for ABIN3016615

anti-Kallikrein 15 antibody (AA 80-180)[Go to Product page](#)**1** Image

Overview

Quantity:	100 µL
Target:	Kallikrein 15 (KLK15)
Binding Specificity:	AA 80-180
Reactivity:	Human
Host:	Rabbit
Clonality:	Polyclonal
Conjugate:	This Kallikrein 15 antibody is un-conjugated
Application:	Western Blotting (WB)

Product Details

Immunogen:	Recombinant fusion protein containing a sequence corresponding to amino acids 80-180 of human KLK15 (NP_059979.2).
Sequence:	RDGPEQLRTT SRVIPHPRYE ARSHRNDIML LRLVQPARLN PQVRPAVLPT RCPHPGEACV VSGWGLVSHN EPGTAGSPRS QVSLPDTLHC ANISIISDTS C
Isotype:	IgG
Cross-Reactivity:	Mouse, Rat
Characteristics:	Polyclonal Antibodies

Target Details

Target:	Kallikrein 15 (KLK15)
---------	-----------------------

Target Details

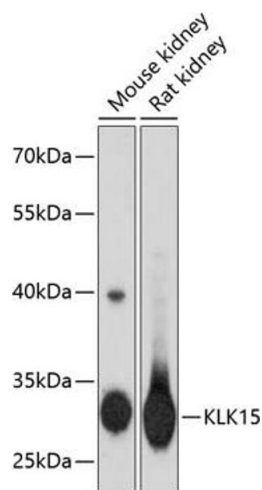
Alternative Name:	KLK15 (KLK15 Products)
Background:	<p>Kallikreins are a subgroup of serine proteases having diverse physiological functions. Growing evidence suggests that many kallikreins are implicated in carcinogenesis and some have potential as novel cancer and other disease biomarkers. This gene is one of the fifteen kallikrein subfamily members located in a cluster on chromosome 19. In prostate cancer, this gene has increased expression, which indicates its possible use as a diagnostic or prognostic marker for prostate cancer. The gene contains multiple polyadenylation sites and alternative splicing results in multiple transcript variants encoding distinct isoforms.,KLK15,ACO,HSRNASPH,Cancer,Invasion and Metastasis,Signal Transduction,Cell Biology & Developmental Biology,Cytoskeleton,Extracellular Matrix,Ubiquitin,KLK15</p>
Molecular Weight:	13 kDa/17 kDa/19 kDa/28 kDa
Gene ID:	55554
UniProt:	Q9H2R5
Pathways:	Complement System

Application Details

Application Notes:	WB,1:500 - 1:2000
Restrictions:	For Research Use only

Handling

Buffer:	PBS with 0.02 % sodium azide,50 % glycerol, pH 7.3.
Preservative:	Sodium azide
Precaution of Use:	This product contains Sodium azide: a POISONOUS AND HAZARDOUS SUBSTANCE which should be handled by trained staff only.
Storage:	-20 °C
Storage Comment:	Store at -20°C. Avoid freeze / thaw cycles.



Western Blotting

Image 1. Western blot analysis of extracts of various cell lines, using KLK15 antibody (ABIN3016614, ABIN3016615, ABIN3016616 and ABIN6219799) at 1:3000 dilution. Secondary antibody: HRP Goat Anti-Rabbit IgG (H+L) (ABIN1684268 and ABIN3020597) at 1:10000 dilution. Lysates/proteins: 25 µg per lane. Blocking buffer: 3 % nonfat dry milk in TBST. Detection: ECL Basic Kit (RM00020). Exposure time: 30s.