

Datasheet for ABIN3016672
anti-OPCML antibody (AA 246-345)[Go to Product page](#)

1 Image

Overview

Quantity:	100 µL
Target:	OPCML
Binding Specificity:	AA 246-345
Reactivity:	Human
Host:	Rabbit
Clonality:	Polyclonal
Conjugate:	This OPCML antibody is un-conjugated
Application:	Western Blotting (WB)

Product Details

Immunogen:	Recombinant fusion protein containing a sequence corresponding to amino acids 246-345 of human OPCML (NP_002536.1).
Sequence:	ASAVPMAEFQ WFKEETRLAT GLDGMRIENK GRMSTLTFFN VSEKDYGNYS CVATNKLGN NASITLYGPG AVIDGVNSAS RALACLWLSG TLLAHFFIKF
Isotype:	IgG
Cross-Reactivity:	Human, Mouse, Rat
Characteristics:	Polyclonal Antibodies

Target Details

Target:	OPCML
---------	-------

Target Details

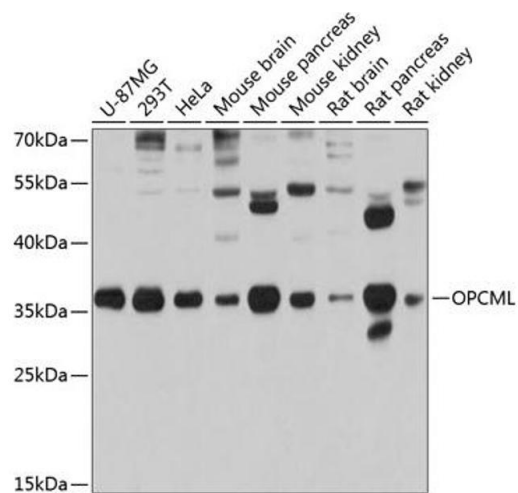
Alternative Name:	OPCML (OPCML Products)
Background:	<p>This gene encodes a member of the IgLON subfamily in the immunoglobulin protein superfamily of proteins. The encoded preprotein is proteolytically processed to generate the mature protein. This protein is localized in the plasma membrane and may have an accessory role in opioid receptor function. This gene has an ortholog in rat and bovine. The opioid binding-cell adhesion molecule encoded by the rat gene binds opioid alkaloids in the presence of acidic lipids, exhibits selectivity for mu ligands and acts as a GPI-anchored protein. Since the encoded protein is highly conserved in species during evolution, it may have a fundamental role in mammalian systems. Alternative splicing results in multiple transcript variants, at least one of which encodes an isoform that is proteolytically processed.</p> <p>OPCML, IGLON1, OBCAM, OPCM, Cancer, Tumor suppressors, Signal Transduction, G protein signaling, G-Protein-Coupled Receptors (GPCR), Cell Biology & Developmental Biology, Cell Adhesion, Neuroscience, OPCML</p>
Molecular Weight:	33 kDa/37 kDa/38 kDa
Gene ID:	4978
UniProt:	Q14982

Application Details

Application Notes:	WB, 1:1000 - 1:2000
Restrictions:	For Research Use only

Handling

Buffer:	PBS with 0.02 % sodium azide, 50 % glycerol, pH 7.3.
Preservative:	Sodium azide
Precaution of Use:	This product contains Sodium azide: a POISONOUS AND HAZARDOUS SUBSTANCE which should be handled by trained staff only.
Storage:	-20 °C
Storage Comment:	Store at -20°C. Avoid freeze / thaw cycles.



Western Blotting

Image 1. Western blot analysis of extracts of various cell lines, using OPCML antibody (ABIN3016671, ABIN3016672, ABIN3016673 and ABIN6219807) at 1:1000 dilution. Secondary antibody: HRP Goat Anti-Rabbit IgG (H+L) (ABIN1684268 and ABIN3020597) at 1:10000 dilution. Lysates/proteins: 25 µg per lane. Blocking buffer: 3 % nonfat dry milk in TBST. Detection: ECL Basic Kit (RM00020). Exposure time: 10s.