

Datasheet for ABIN3016695
anti-PGC antibody (AA 100-200)

5 Images

[Go to Product page](#)

Overview

Quantity:	100 µL
Target:	PGC
Binding Specificity:	AA 100-200
Reactivity:	Human
Host:	Rabbit
Clonality:	Polyclonal
Conjugate:	This PGC antibody is un-conjugated
Application:	Western Blotting (WB), Immunohistochemistry (IHC)

Product Details

Immunogen:	A synthetic peptide corresponding to a sequence within amino acids 100-200 of human Pepsinogen II (NP_001159896.1).
Sequence:	PSVYCQSQAC TSHSRFNPSE SSTYSTNGQT FSLQYGSQSL TGFFGYDTLT VQSIQVPNQE FGLSENEPGT NFVYAQFDGI MGLAYPALSV DEATTAMQGM V
Isotype:	IgG
Cross-Reactivity:	Human, Mouse, Rat
Characteristics:	Polyclonal Antibodies

Target Details

Target:	PGC
---------	-----

Target Details

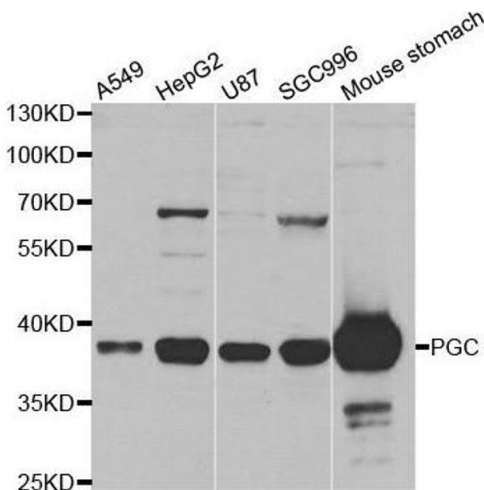
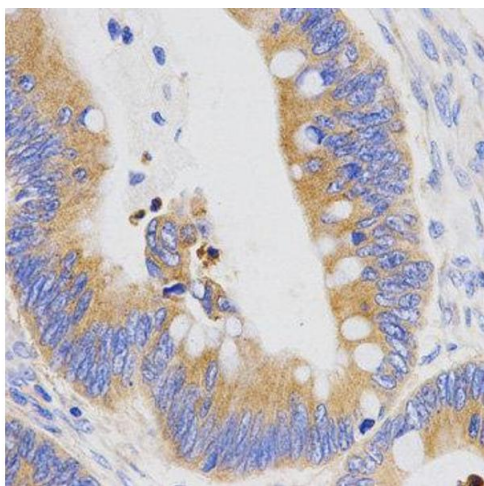
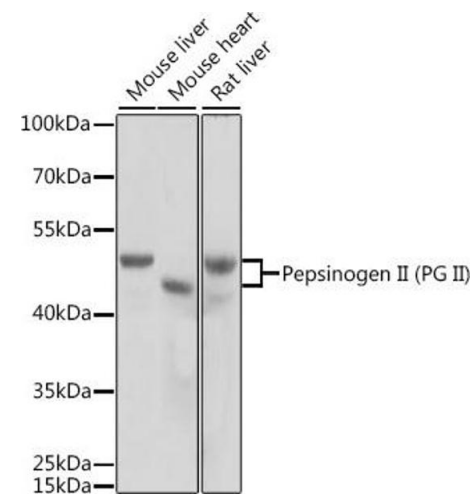
Alternative Name:	PGC (PGC Products)
Background:	<p>This gene encodes an aspartic proteinase that belongs to the peptidase family A1. The encoded protein is a digestive enzyme that is produced in the stomach and constitutes a major component of the gastric mucosa. This protein is also secreted into the serum. This protein is synthesized as an inactive zymogen that includes a highly basic prosegment. This enzyme is converted into its active mature form at low pH by sequential cleavage of the prosegment that is carried out by the enzyme itself. Polymorphisms in this gene are associated with susceptibility to gastric cancers. Serum levels of this enzyme are used as a biomarker for certain gastric diseases including Helicobacter pylori related gastritis. Alternate splicing results in multiple transcript variants. A pseudogene of this gene is found on chromosome 1.,PGC,PEPC,PGII,gastricsin,Cancer,Tumor biomarkers,Signal Transduction,Endocrine & Metabolism,Amino acid metabolism,PGC</p>
Molecular Weight:	34 kDa/42 kDa
Gene ID:	5225
UniProt:	P20142

Application Details

Application Notes:	WB,1:500 - 1:2000,IHC,1:100 - 1:200
Restrictions:	For Research Use only

Handling

Buffer:	PBS with 0.02 % sodium azide,50 % glycerol, pH 7.3.
Preservative:	Sodium azide
Precaution of Use:	This product contains Sodium azide: a POISONOUS AND HAZARDOUS SUBSTANCE which should be handled by trained staff only.
Storage:	-20 °C
Storage Comment:	Store at -20°C. Avoid freeze / thaw cycles.



Western Blotting

Image 1. Western blot analysis of extracts of various cell lines, using Pepsinogen II (PG II) antibody (ABIN3016694, ABIN3016695, ABIN3016696 and ABIN6219816) at 1:1000 dilution. Secondary antibody: HRP Goat Anti-Rabbit IgG (H+L) (ABIN1684268 and ABIN3020597) at 1:10000 dilution. Lysates/proteins: 25 µg per lane. Blocking buffer: 3 % nonfat dry milk in TBST. Detection: ECL Basic Kit (RM00020). Exposure time: 5s.

Immunohistochemistry

Image 2.

Western Blotting

Image 3. Western blot analysis of extracts of various cell lines, using PGC antibody.

Please check the [product details page](#) for more images. Overall 5 images are available for ABIN3016695.