

Datasheet for ABIN3016812
anti-AQP3 antibody (AA 178-292)

6 Images

[Go to Product page](#)

Overview

Quantity:	100 µL
Target:	AQP3
Binding Specificity:	AA 178-292
Reactivity:	Human
Host:	Rabbit
Clonality:	Polyclonal
Conjugate:	This AQP3 antibody is un-conjugated
Application:	Western Blotting (WB), Immunohistochemistry (IHC), Immunofluorescence (IF)

Product Details

Immunogen:	Recombinant fusion protein containing a sequence corresponding to amino acids 178-292 of human AQP3 (NP_004916.1).
Sequence:	IVDPYNNPVP RGLEAFTVGL VVLVIGTSMG FNSGYAVNPA RDFGPRLFTA LAGWGS AVFT TGQHWWWWPI VSPLLGS IAG VFVYQLMIGC HLEQPPPSNE EENVKLAHV K HKEQI
Isotype:	IgG
Cross-Reactivity:	Human, Mouse, Rat
Characteristics:	Polyclonal Antibodies
Purification:	Affinity purification

Target Details

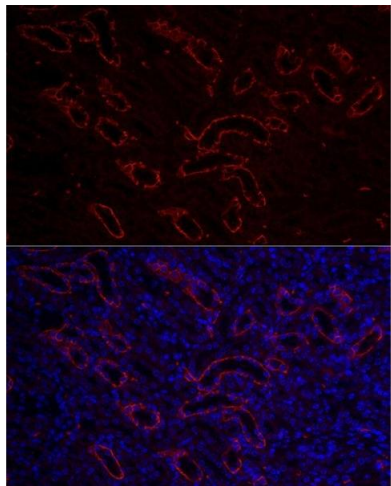
Target:	AQP3
Alternative Name:	AQP3 (AQP3 Products)
Background:	<p>This gene encodes the water channel protein aquaporin 3. Aquaporins are a family of small integral membrane proteins related to the major intrinsic protein, also known as aquaporin 0. Aquaporin 3 is localized at the basal lateral membranes of collecting duct cells in the kidney. In addition to its water channel function, aquaporin 3 has been found to facilitate the transport of nonionic small solutes such as urea and glycerol, but to a smaller degree. It has been suggested that water channels can be functionally heterogeneous and possess water and solute permeation mechanisms. Alternative splicing of this gene results in multiple transcript variants encoding different isoforms.,AQP3,AQP-3,GIL,Cancer,Signal Transduction,Endocrine & Metabolism,AQP3</p>
Molecular Weight:	29 kDa/31 kDa
Gene ID:	360
UniProt:	Q92482

Application Details

Application Notes:	WB,1:500 - 1:2000,IHC,1:50 - 1:200,IF,1:50 - 1:200
Restrictions:	For Research Use only

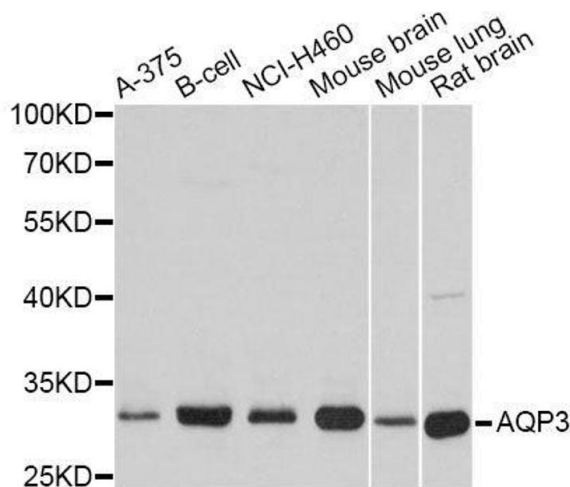
Handling

Buffer:	PBS with 0.02 % sodium azide,50 % glycerol, pH 7.3.
Preservative:	Sodium azide
Precaution of Use:	This product contains Sodium azide: a POISONOUS AND HAZARDOUS SUBSTANCE which should be handled by trained staff only.
Storage:	-20 °C
Storage Comment:	Store at -20°C. Avoid freeze / thaw cycles.



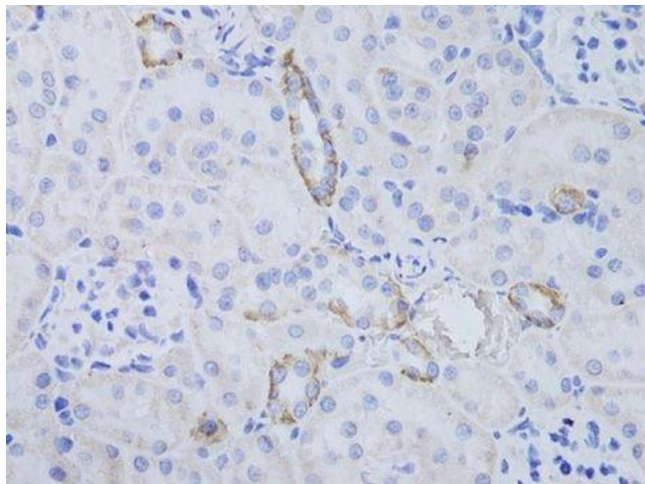
Immunofluorescence

Image 1. Immunofluorescence analysis of mouse kidney cells using Rabbit pAb (ABIN3016811, ABIN3016812, ABIN3016813, ABIN1678723 and ABIN6219847) at dilution of 1:150 (40x lens). Blue: DAPI for nuclear staining.



Western Blotting

Image 2. Western blot analysis of extracts of various cell lines, using AQP3 antibody.



Immunohistochemistry (Paraffin-embedded Sections)

Image 3. Immunohistochemistry of paraffin-embedded rat kidney using AQP3 antibody.

Please check the [product details page](#) for more images. Overall 6 images are available for ABIN3016812.