



Datasheet for ABIN3016823
anti-BDKRB2 antibody (AA 302-391)



[Go to Product page](#)

3 Images

Overview

Quantity:	100 µL
Target:	BDKRB2
Binding Specificity:	AA 302-391
Reactivity:	Human
Host:	Rabbit
Clonality:	Polyclonal
Conjugate:	This BDKRB2 antibody is un-conjugated
Application:	Western Blotting (WB), Immunofluorescence (IF)

Product Details

Immunogen:	Recombinant fusion protein containing a sequence corresponding to amino acids 302-391 of human BDKRB2 (NP_000614.1).
Sequence:	SSCQDERIID VITQIASFMA YSNSCLNPLV YVIVGKRFRK KSWEVYQGVC QKGGCRSEPI QMENSMGTLR TSISVERQIH KLQDWAGSRQ
Isotype:	IgG
Cross-Reactivity:	Human, Mouse, Rat
Characteristics:	Polyclonal Antibodies
Purification:	Affinity purification

Target Details

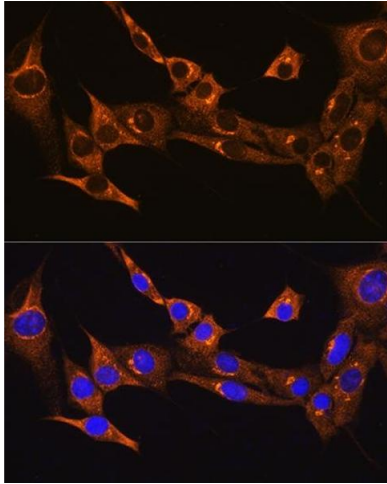
Target:	BDKRB2
Alternative Name:	BDKRB2 (BDKRB2 Products)
Background:	<p>This gene encodes a receptor for bradykinin. The 9 aa bradykinin peptide elicits many responses including vasodilation, edema, smooth muscle spasm and pain fiber stimulation. This receptor associates with G proteins that stimulate a phosphatidylinositol-calcium second messenger system. Alternate start codons result in two isoforms of the protein.,BDKRB2,B2R,BK-2,BK2,BKR2,BRB2,Signal Transduction,G protein signaling,G-Protein-Coupled Receptors(GPCR),Cardiovascular,Blood,BDKRB2</p>
Molecular Weight:	41 kDa/44 kDa
Gene ID:	624
UniProt:	P30411
Pathways:	ACE Inhibitor Pathway , Negative Regulation of intrinsic apoptotic Signaling

Application Details

Application Notes:	WB,1:500 - 1:2000,IF,1:50 - 1:200
Restrictions:	For Research Use only

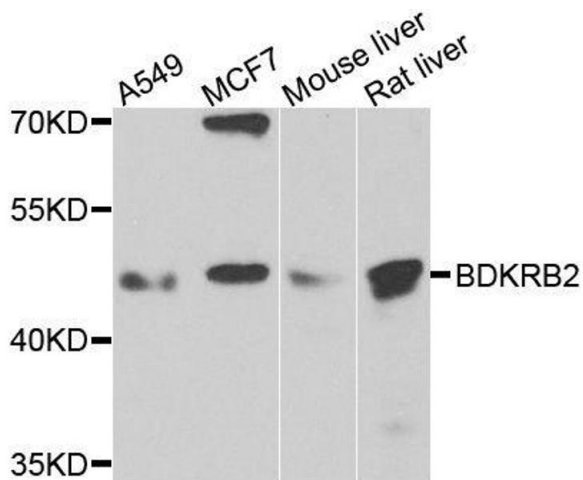
Handling

Buffer:	PBS with 0.02 % sodium azide,50 % glycerol, pH 7.3.
Preservative:	Sodium azide
Precaution of Use:	This product contains Sodium azide: a POISONOUS AND HAZARDOUS SUBSTANCE which should be handled by trained staff only.
Storage:	-20 °C
Storage Comment:	Store at -20°C. Avoid freeze / thaw cycles.



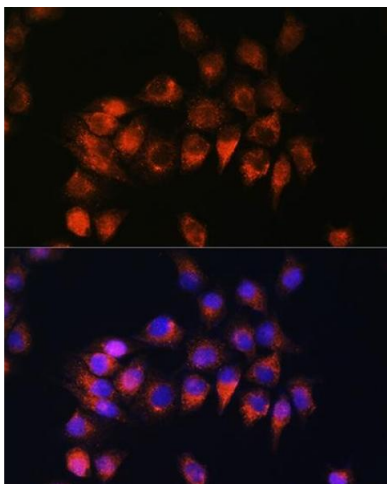
Immunofluorescence

Image 1. Immunofluorescence analysis of NIH/3T3 cells using BDKRB2 Rabbit pAb (ABIN3016822, ABIN3016823, ABIN3016824 and ABIN6219849) at dilution of 1:100. Blue: DAPI for nuclear staining.



Western Blotting

Image 2. Western blot analysis of extracts of various cell lines, using BDKRB2 antibody.



Immunofluorescence

Image 3. Immunofluorescence analysis of HeLa cells using BDKRB2 Rabbit pAb (ABIN3016822, ABIN3016823, ABIN3016824 and ABIN6219849) at dilution of 1:100. Blue: DAPI for nuclear staining.