

Datasheet for ABIN3016953
anti-SLC1A6 antibody (AA 155-265)



[Go to Product page](#)

1 Image

Overview

Quantity:	100 µL
Target:	SLC1A6
Binding Specificity:	AA 155-265
Reactivity:	Human
Host:	Rabbit
Clonality:	Polyclonal
Conjugate:	This SLC1A6 antibody is un-conjugated
Application:	Western Blotting (WB)

Product Details

Immunogen:	Recombinant fusion protein containing a sequence corresponding to amino acids 155-265 of human SLC1A6 (NP_001259016.1).
Sequence:	PGKGSKEGLH REGRIETIPT ADAFMDLIRN MFPPNLVEAC FKQFKTQYST RVVTRTMVRT ENGSEPGASM PPPFSVENGT SFLENVTRAL GTLQEMLSFE ETVPVPGSAN G
Isotype:	IgG
Cross-Reactivity:	Human, Mouse
Characteristics:	Polyclonal Antibodies

Target Details

Target:	SLC1A6
---------	--------

Target Details

Alternative Name: [SLC1A6 \(SLC1A6 Products\)](#)

Background: Sodium-dependent, high-affinity amino acid transporter that mediates the uptake of L-glutamate and also L-aspartate and D-aspartate. Functions as a symporter that transports one amino acid molecule together with two or three Na⁺ ions and one proton, in parallel with the counter-transport of one K⁺ ion. Mediates Cl⁻ flux that is not coupled to amino acid transport, this avoids the accumulation of negative charges due to aspartate and Na⁺ symport (By similarity. Plays a redundant role in the rapid removal of released glutamate from the synaptic cleft, which is essential for terminating the postsynaptic action of glutamate (Probable.,SLC1A6,EAAT4,Neuroscience,SLC1A6

Molecular Weight: 34 kDa/61 kDa

Gene ID: 6511

UniProt: [P48664](#)

Pathways: [Dicarboxylic Acid Transport](#)

Application Details

Application Notes: WB,1:500 - 1:1000

Restrictions: For Research Use only

Handling

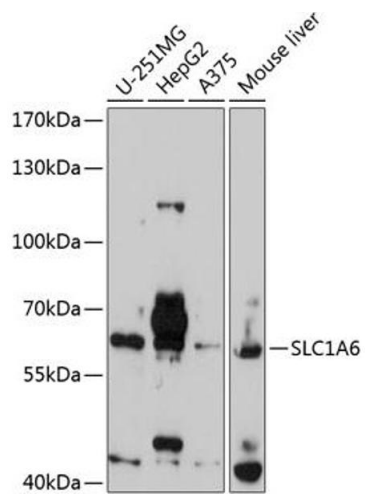
Buffer: PBS with 0.02 % sodium azide,50 % glycerol, pH 7.3.

Preservative: Sodium azide

Precaution of Use: This product contains Sodium azide: a POISONOUS AND HAZARDOUS SUBSTANCE which should be handled by trained staff only.

Storage: -20 °C

Storage Comment: Store at -20°C. Avoid freeze / thaw cycles.



Western Blotting

Image 1. Western blot analysis of extracts of various cell lines, using SLC1 antibody at 1:1000 dilution. Secondary antibody: HRP Goat Anti-Rabbit IgG (H+L) (ABIN1684268 and ABIN3020597) at 1:10000 dilution. Lysates/proteins: 25 µg per lane. Blocking buffer: 3% nonfat dry milk in TBST. Detection: ECL Basic Kit (RM00020). Exposure time: 90s.