

Datasheet for ABIN3017022  
**anti-GRPR antibody (AA 235-384)**

## 3 Images

[Go to Product page](#)

## Overview

Quantity:	100 µL
Target:	GRPR
Binding Specificity:	AA 235-384
Reactivity:	Human
Host:	Rabbit
Clonality:	Polyclonal
Conjugate:	This GRPR antibody is un-conjugated
Application:	Western Blotting (WB)

## Product Details

Immunogen:	Recombinant fusion protein containing a sequence corresponding to amino acids 235-384 of human GRPR (NP_005305.1).
Sequence:	KNLIQSAYNL PVEGNIHVKK QIESRKRLAK TVLVFVGLFA FCWLPNHVIY LYRSYHYSEV DTSMLHFVTS ICARLLAFTN SCVNPFALYL LSKSFRKQFN TQLLCCQPGL IIRSHSTGRS TTCMTSLKST NPSVATFSLI NGNICHERYV
Isotype:	IgG
Cross-Reactivity:	Human, Mouse, Rat
Characteristics:	Polyclonal Antibodies
Purification:	Affinity purification

## Target Details

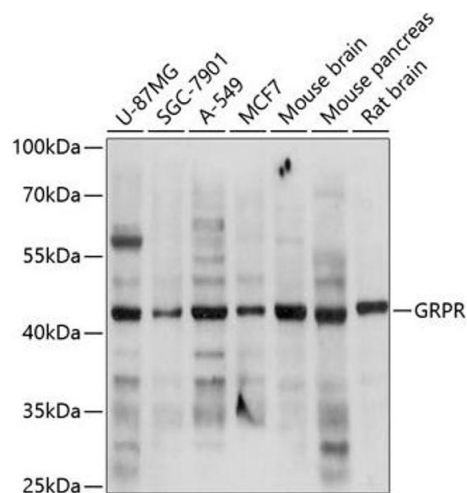
Target:	GRPR
Alternative Name:	GRPR ( <a href="#">GRPR Products</a> )
Background:	<p>Gastrin-releasing peptide (GRP) regulates numerous functions of the gastrointestinal and central nervous systems, including release of gastrointestinal hormones, smooth muscle cell contraction, and epithelial cell proliferation and is a potent mitogen for neoplastic tissues. The effects of GRP are mediated through the gastrin-releasing peptide receptor. This receptor is a glycosylated, 7-transmembrane G-protein coupled receptor that activates the phospholipase C signaling pathway. The receptor is aberrantly expressed in numerous cancers such as those of the lung, colon, and prostate. An individual with autism and multiple exostoses was found to have a balanced translocation between chromosome 8 and a chromosome X breakpoint located within the gastrin-releasing peptide receptor gene.,GRPR,BB2,BB2R,Signal Transduction,G protein signaling,G-Protein-Coupled Receptors(GPCR),Neuroscience,GRPR</p>
Molecular Weight:	43 kDa
Gene ID:	2925
UniProt:	<a href="#">P30550</a>

## Application Details

Application Notes:	WB,1:500 - 1:2000
Restrictions:	For Research Use only

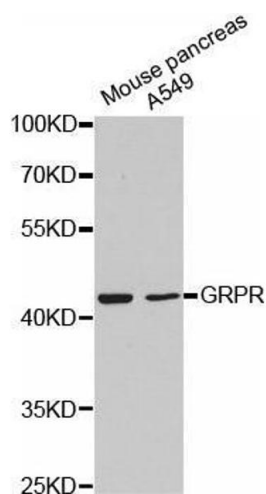
## Handling

Buffer:	PBS with 0.02 % sodium azide,50 % glycerol, pH 7.3.
Preservative:	Sodium azide
Precaution of Use:	This product contains Sodium azide: a POISONOUS AND HAZARDOUS SUBSTANCE which should be handled by trained staff only.
Storage:	-20 °C
Storage Comment:	Store at -20°C. Avoid freeze / thaw cycles.



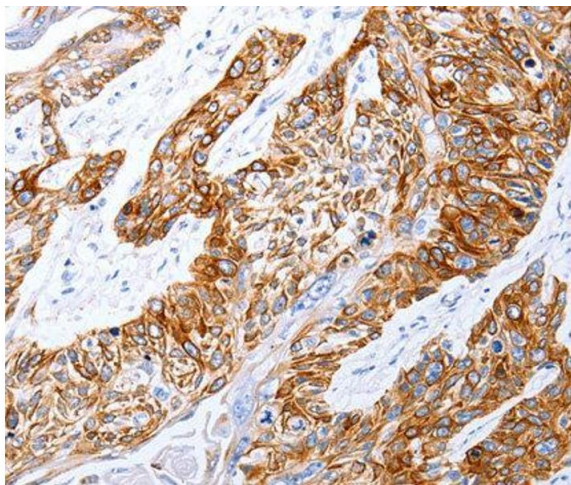
### Western Blotting

**Image 1.** Western blot analysis of extracts of various cell lines, using GRPR antibody (ABIN3017021, ABIN3017022, ABIN3017023 and ABIN6219927) at 1:3000 dilution. Secondary antibody: HRP Goat Anti-Rabbit IgG (H+L) (ABIN1684268 and ABIN3020597) at 1:10000 dilution. Lysates/proteins: 25 µg per lane. Blocking buffer: 3 % nonfat dry milk in TBST. Detection: ECL Basic Kit (RM00020). Exposure time: 15s.



### Western Blotting

**Image 2.** Western blot analysis of extracts of various cell lines, using GRPR antibody.



### Immunohistochemistry

**Image 3.**