



[Go to Product page](#)

Datasheet for ABIN301711

anti-TLR11 antibody (AA 900-950)

2 Images

Overview

Quantity:	0.1 mg
Target:	TLR11 (Tlr11)
Binding Specificity:	AA 900-950
Reactivity:	Mouse
Host:	Rabbit
Clonality:	Polyclonal
Conjugate:	This TLR11 antibody is un-conjugated
Application:	Western Blotting (WB), Flow Cytometry (FACS)

Product Details

Immunogen:	A synthetic peptide within amino acid residues 911-926 (CEQLKRRLSKAGQERD) of mouse TLR11 (Genbank accession no. NP_991388). Percent identity by BLAST analysis: Mouse (100%), Rat (69%). Type of Immunogen: Synthetic peptide
Isotype:	IgG
Specificity:	Immunizing peptide will block the mouse TLR11 band in western blotting. The approx. 32 kD band may be a proteolytic degradation product of TLR11.
Predicted Reactivity:	Percent identity by BLAST analysis: Mouse (100%).
Purification:	Protein G purified

Target Details

Target:	TLR11 (Tlr11)
Alternative Name:	TLR11 (Tlr11 Products)
Background:	Name/Gene ID: Tlr11 Family: Toll-like Receptor Synonyms: Tlr11, Gm287, Toll-like receptor 11
Gene ID:	239081
NCBI Accession:	NP_991388
UniProt:	Q6R5P0
Pathways:	Activation of Innate immune Response

Application Details

Application Notes:	Approved: Flo, WB (1 - 3 µg/mL)
Comment:	Target Species of Antibody: Mouse
Restrictions:	For Research Use only

Handling

Format:	Liquid
Concentration:	Lot specific
Buffer:	PBS, 0.2 % gelatin, 0.05 % sodium azide.
Preservative:	Sodium azide
Precaution of Use:	This product contains Sodium azide: a POISONOUS AND HAZARDOUS SUBSTANCE which should be handled by trained staff only.
Storage:	4 °C, -80 °C
Storage Comment:	Short term: 4°C Long term: -70°C.

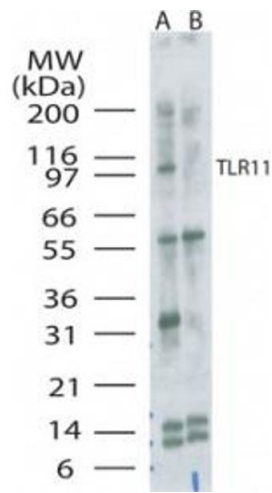


Image 1.

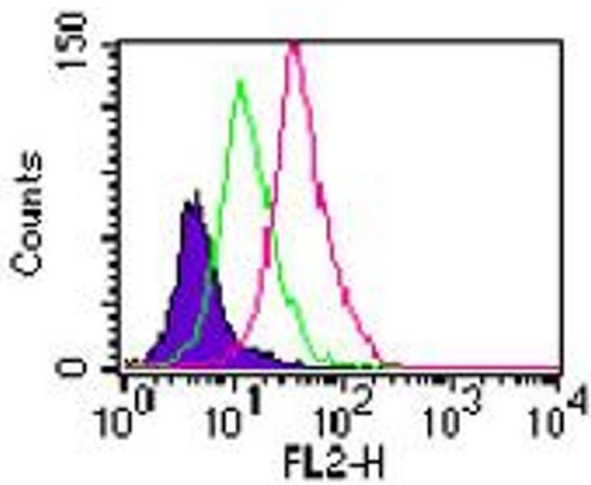


Image 2.