

Datasheet for ABIN3017184 **anti-SLC16A1 antibody**



[Go to Product page](#)

3 Images

Overview

Quantity:	100 µL
Target:	SLC16A1
Reactivity:	Human
Host:	Rabbit
Clonality:	Polyclonal
Conjugate:	This SLC16A1 antibody is un-conjugated
Application:	Western Blotting (WB), Immunohistochemistry (IHC), Immunofluorescence (IF)

Product Details

Immunogen:	A synthetic peptide of human MCT1
Isotype:	IgG
Cross-Reactivity:	Human, Mouse, Rat
Characteristics:	Polyclonal Antibodies

Target Details

Target:	SLC16A1
Alternative Name:	SLC16A1 (SLC16A1 Products)
Background:	The protein encoded by this gene is a proton-linked monocarboxylate transporter that catalyzes the movement of many monocarboxylates, such as lactate and pyruvate, across the plasma membrane. Mutations in this gene are associated with erythrocyte lactate transporter defect. Alternatively spliced transcript variants have been found for this

Target Details

gene.,SLC16A1,HHF7,MCT,MCT1,MCT1D,Cancer,Signal Transduction,Endocrine & Metabolism,Carbohydrate metabolism,SLC16A1

Molecular Weight: 46 kDa/53 kDa

Gene ID: 6566

UniProt: [P53985](#)

Pathways: [Warburg Effect](#)

Application Details

Application Notes: WB,1:1000 - 1:2000,IHC,1:50 - 1:200,IF,1:50 - 1:200

Restrictions: For Research Use only

Handling

Buffer: PBS with 0.02 % sodium azide,50 % glycerol, pH 7.3.

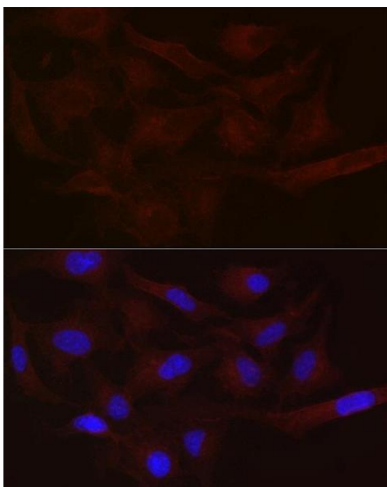
Preservative: Sodium azide

Precaution of Use: This product contains Sodium azide: a POISONOUS AND HAZARDOUS SUBSTANCE which should be handled by trained staff only.

Storage: -20 °C

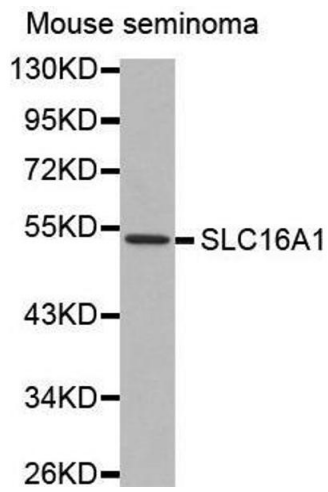
Storage Comment: Store at -20°C. Avoid freeze / thaw cycles.

Images



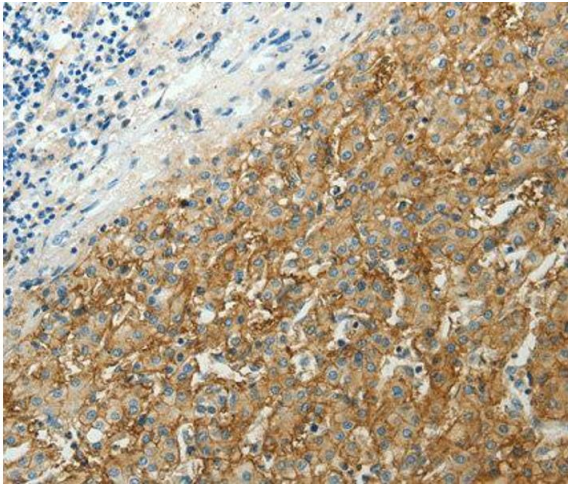
Western Blotting

Image 1. Western blot analysis of extracts of HeLa cells, using MCT1/SLC16 antibody (ABIN3017183, ABIN3017184, ABIN3017185 and ABIN6219986) at 1:2130 dilution. Secondary antibody: HRP Goat Anti-Rabbit IgG (H+L) (ABIN1684268 and ABIN3020597) at 1:10000 dilution. Lysates/proteins: 25 µg per lane. Blocking buffer: 3 % nonfat dry milk in TBST. Detection: ECL Basic Kit (RM00020). Exposure time: 1s.



Western Blotting

Image 2.



Immunohistochemistry

Image 3.