

Datasheet for ABIN3017211

anti-ABCC1 antibody

5 Images

[Go to Product page](#)

Overview

Quantity:	100 µL
Target:	ABCC1
Reactivity:	Human
Host:	Rabbit
Clonality:	Polyclonal
Conjugate:	This ABCC1 antibody is un-conjugated
Application:	Western Blotting (WB), Immunohistochemistry (IHC), Immunofluorescence (IF)

Product Details

Immunogen:	A synthetic peptide of human MRP1/ABCC1
Isotype:	IgG
Cross-Reactivity:	Human, Mouse, Rat
Characteristics:	Polyclonal Antibodies
Purification:	Affinity purification

Target Details

Target:	ABCC1
Alternative Name:	ABCC1 (ABCC1 Products)
Background:	The protein encoded by this gene is a member of the superfamily of ATP-binding cassette (ABC) transporters. ABC proteins transport various molecules across extra-and intra-cellular

Target Details

membranes. ABC genes are divided into seven distinct subfamilies (ABC1, MDR/TAP, MRP, ALD, OABP, GCN20, White). This full transporter is a member of the MRP subfamily which is involved in multi-drug resistance. This protein functions as a multispecific organic anion transporter, with oxidized glutathione, cysteinyl leukotrienes, and activated aflatoxin B1 as substrates. This protein also transports glucuronides and sulfate conjugates of steroid hormones and bile salts. Alternatively spliced variants of this gene have been described but their full-length nature is unknown.,ABCC1,ABC29,ABCC,GS-X,MRP,MRP1,Cancer,Drug resistance,MRP-related proteins,Signal Transduction,Endocrine & Metabolism,Drug metabolism,Cardiovascular,Blood,Blood Pressure regulation,Heart,Cardiovascular diseases,Hypertension,Heart disease,ABCC1

Molecular Weight: 151-172 kDa

Gene ID: 4363

UniProt: [P33527](#)

Pathways: [SARS-CoV-2 Protein Interactome](#)

Application Details

Application Notes: WB,1:500 - 1:2000,IHC,1:50 - 1:200,IF,1:50 - 1:200

Restrictions: For Research Use only

Handling

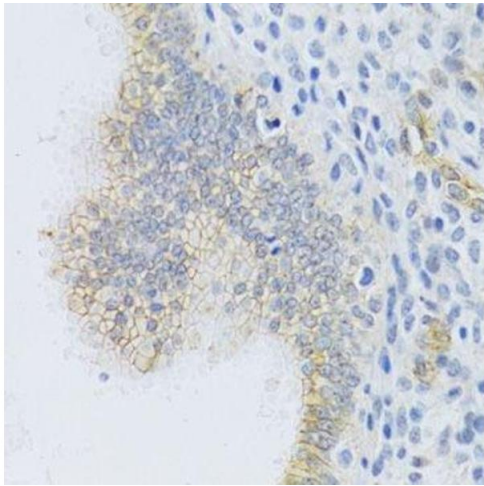
Buffer: PBS with 0.02 % sodium azide,50 % glycerol, pH 7.3.

Preservative: Sodium azide

Precaution of Use: This product contains Sodium azide: a POISONOUS AND HAZARDOUS SUBSTANCE which should be handled by trained staff only.

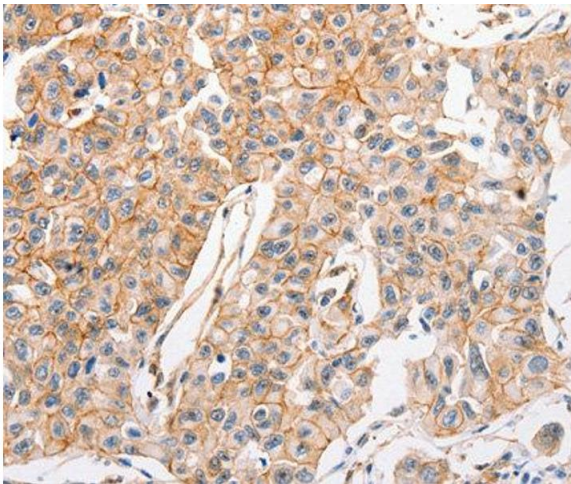
Storage: -20 °C

Storage Comment: Store at -20°C. Avoid freeze / thaw cycles.



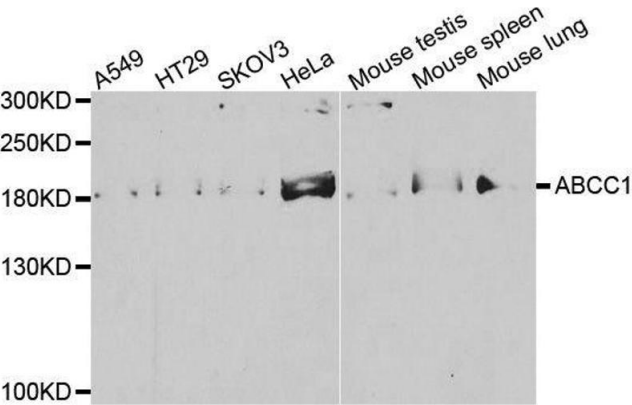
Immunohistochemistry (Paraffin-embedded Sections)

Image 1. Immunohistochemistry of paraffin-embedded human uterine cancer using ABCC1 Antibody.



Immunohistochemistry

Image 2.



Western Blotting

Image 3. Western blot analysis of extracts of various cell lines, using ABCC1 antibody.

Please check the [product details page](#) for more images. Overall 5 images are available for ABIN3017211.