

Datasheet for ABIN3017279  
**anti-HCRTR2 antibody (AA 380-444)**



[Go to Product page](#)

2 Images

## Overview

Quantity:	100 µL
Target:	HCRTR2
Binding Specificity:	AA 380-444
Reactivity:	Human
Host:	Rabbit
Clonality:	Polyclonal
Conjugate:	This HCRTR2 antibody is un-conjugated
Application:	Western Blotting (WB)

## Product Details

Immunogen:	Recombinant fusion protein containing a sequence corresponding to amino acids 380-444 of human HCRTR2 (NP_001517.2).
Sequence:	SCCCLGVHHR QEDRLTRGRT STESRKSLTT QISNFDNISK LSEQVVLTSI STLPAANGAG PLQNW
Isotype:	IgG
Cross-Reactivity:	Human, Mouse
Characteristics:	Polyclonal Antibodies
Purification:	Affinity purification

## Target Details

Target:	HCRTR2
---------	--------

## Target Details

---

Alternative Name:	<a href="#">HCRTR2 (HCRTR2 Products)</a>
Background:	The protein encoded by this gene is a G-protein coupled receptor involved in the regulation of feeding behavior. The encoded protein binds the hypothalamic neuropeptides orexin A and orexin B. A related gene (HCRTR1) encodes a G-protein coupled receptor that selectively binds orexin A.,HCRTR2,OX2R,Signal Transduction,G protein signaling,G-Protein-Coupled Receptors(GPCR),Endocrine & Metabolism,Endocrine and metabolic diseases,Obesity,Neuroscience,HCRTR2
Molecular Weight:	50 kDa
Gene ID:	3062
UniProt:	<a href="#">O43614</a>
Pathways:	<a href="#">Feeding Behaviour</a>

## Application Details

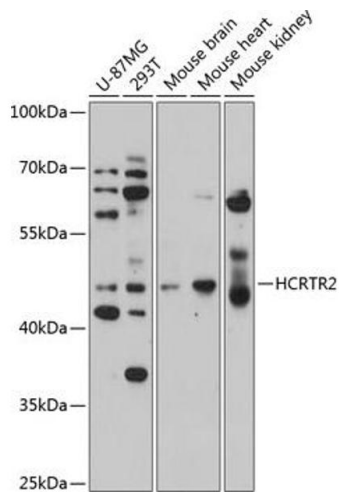
---

Application Notes:	WB,1:500 - 1:2000
Restrictions:	For Research Use only

## Handling

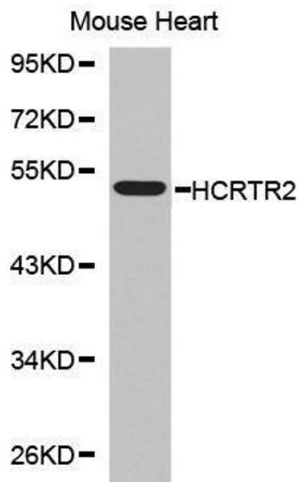
---

Buffer:	PBS with 0.02 % sodium azide,50 % glycerol, pH 7.3.
Preservative:	Sodium azide
Precaution of Use:	This product contains Sodium azide: a POISONOUS AND HAZARDOUS SUBSTANCE which should be handled by trained staff only.
Storage:	-20 °C
Storage Comment:	Store at -20°C. Avoid freeze / thaw cycles.



### Western Blotting

**Image 1.** Western blot analysis of extracts of various cell lines, using HCRTR2 antibody at 1:1000 dilution. Secondary antibody: HRP Goat Anti-Rabbit IgG (H+L) (ABIN1684268 and ABIN3020597) at 1:10000 dilution. Lysates/proteins: 25 µg per lane. Blocking buffer: 3% nonfat dry milk in TBST. Detection: ECL Basic Kit (RM00020). Exposure time: 30s.



### Western Blotting

**Image 2.**