

Datasheet for ABIN3017321
anti-RAMP2 antibody (AA 1-145)

6 Images

[Go to Product page](#)

Overview

Quantity:	100 µL
Target:	RAMP2
Binding Specificity:	AA 1-145
Reactivity:	Human
Host:	Rabbit
Clonality:	Polyclonal
Conjugate:	This RAMP2 antibody is un-conjugated
Application:	Western Blotting (WB), Immunohistochemistry (IHC)

Product Details

Immunogen:	Recombinant fusion protein containing a sequence corresponding to amino acids 1-145 of human RAMP2 (NP_005845.2).
Sequence:	MASLRVERAG GPRLPRTRVG RPAALRLLLL LGAVLNPHEA LAQPLPTTGT PGSEGGTVKN YETAVQFCWN HYKDQMDPIE KDWCDWAMIS RPYSTLRDCL EHFAELFDLG FPNPLAERII FETHQIHFAN CSLVQPTFSD PPEDV
Isotype:	IgG
Cross-Reactivity:	Human, Mouse, Rat
Characteristics:	Polyclonal Antibodies

Target Details

Target:	RAMP2
---------	-------

Target Details

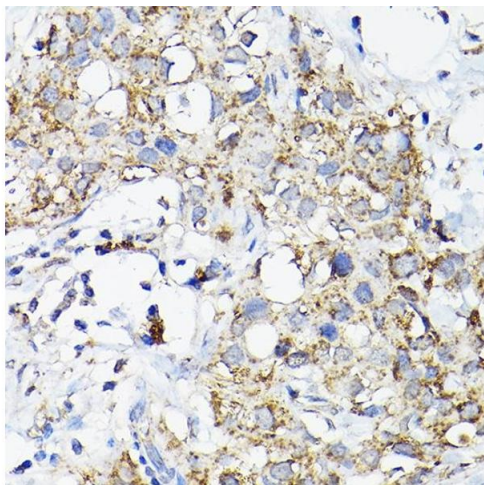
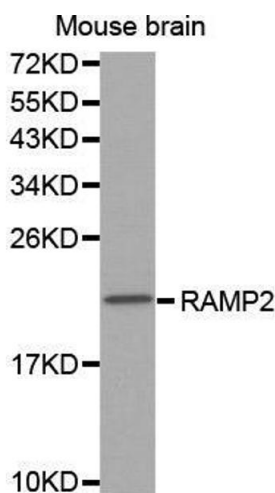
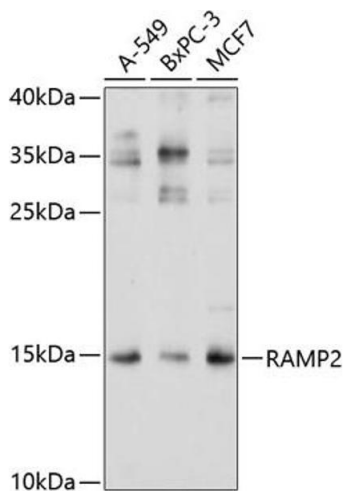
Alternative Name:	RAMP2 (RAMP2 Products)
Background:	<p>The protein encoded by this gene is a member of the RAMP family of single-transmembrane-domain proteins, called receptor (calcitonin) activity modifying proteins (RAMPs). RAMPs are type I transmembrane proteins with an extracellular N terminus and a cytoplasmic C terminus. RAMPs are required to transport calcitonin-receptor-like receptor (CRLR) to the plasma membrane. CRLR, a receptor with seven transmembrane domains, can function as either a calcitonin-gene-related peptide (CGRP) receptor or an adrenomedullin receptor, depending on which members of the RAMP family are expressed. In the presence of this (RAMP2) protein, CRLR functions as an adrenomedullin receptor. The RAMP2 protein is involved in core glycosylation and transportation of adrenomedullin receptor to the cell surface.,RAMP2,Signal Transduction,G protein signaling,G-Protein-Coupled Receptors(GPCR),Cell Biology & Developmental Biology,Growth factor,RAMP2</p>
Molecular Weight:	19 kDa/20 kDa
Gene ID:	10266
UniProt:	O60895
Pathways:	cAMP Metabolic Process , Myometrial Relaxation and Contraction , Cell-Cell Junction Organization , Regulation of G-Protein Coupled Receptor Protein Signaling

Application Details

Application Notes:	WB,1:500 - 1:2000,IHC,1:50 - 1:200
Restrictions:	For Research Use only

Handling

Buffer:	PBS with 0.02 % sodium azide,50 % glycerol, pH 7.3.
Preservative:	Sodium azide
Precaution of Use:	This product contains Sodium azide: a POISONOUS AND HAZARDOUS SUBSTANCE which should be handled by trained staff only.
Storage:	-20 °C
Storage Comment:	Store at -20°C. Avoid freeze / thaw cycles.



Western Blotting

Image 1. Western blot analysis of extracts of various cell lines, using R antibody (ABIN3017320, ABIN3017321, ABIN3017322 and ABIN6220039) at 1:1000 dilution. Secondary antibody: HRP Goat Anti-Rabbit IgG (H+L) (ABIN1684268 and ABIN3020597) at 1:10000 dilution. Lysates/proteins: 25 µg per lane. Blocking buffer: 3 % nonfat dry milk in TBST. Detection: ECL Basic Kit (RM00020). Exposure time: 10s.

Western Blotting

Image 2.

Immunohistochemistry

Image 3. Immunohistochemistry of paraffin-embedded human breast cancer using R Rabbit pAb (ABIN3017320, ABIN3017321, ABIN3017322 and ABIN6220039) at dilution of 1:200 (40x lens). Perform high pressure antigen retrieval with 10 mM citrate buffer pH 6.0 before commencing with IHC staining protocol.

Please check the [product details page](#) for more images. Overall 6 images are available for ABIN3017321.